

IGSF4B (K-16): sc-103558

BACKGROUND

Immunoglobulin superfamily member 4B (Cell adhesion molecule 3, Nectin-like protein 1) is a nectin family gene product that contains 2 Ig-like C2-type (immunoglobulin-like) domains and an Ig-like V-type (immunoglobulin-like) domain. IGSF4B is a single-pass type I membrane protein that localizes to cell-cell interacting sites along the plasma membrane. IGSF4B functions as a cell adhesion molecule at cell-cell junctions. IGSF4B can be found as a homodimer and has a dual calcium-independent adhesion function; a homophilic cell-cell interaction and a heterophilic cell-cell interaction involving IGSF4, Nectin 1 and Nectin 3. IGSF4B may also interact with EPB41L1 which has a potential for regulating structure or function of cell-cell junctions by similarity. Isoform 1 is expressed in adult and fetal brain. Isoform 2 is highly expressed in the cerebellum but is also weakly expressed in placenta. IGSF4B has been found to be markedly over-expressed in glioma cell lines and prostate cancer cell lines.

REFERENCES

1. Fukuhara, H., et al. 2001. Isolation of the TSL1 and TSL2 genes, members of the tumor suppressor TSLC1 gene family encoding transmembrane proteins. *Oncogene* 20: 5401-5407.
2. Dong, X., et al. 2006. Crystal structure of the V domain of human Nectin-like molecule-1/Syncam3/Tsl1/IGSF4B, a neural tissue-specific immunoglobulin-like cell-cell adhesion molecule. *J. Biol. Chem.* 281: 10610-10617.
3. Gao, J., et al. 2008. Nectin-like molecule 1 is a glycoprotein with a single N-glycosylation site at N290KS which influences its adhesion activity. *Biochim. Biophys. Acta* 1778: 1429-1435.
4. Chen, T., et al. 2008. Role of cell adhesion molecules Necl1 in synaptogenesis in primary cultured rat neurons. *Zhongguo Yi Xue Ke Xue Yuan Xue Bao* 30: 275-279.
5. Gao, J., et al. 2008. Effect of NECL1 on the proliferation of T98G glioma cell line. *Zhongguo Yi Xue Ke Xue Yuan Xue Bao* 30: 280-283.
6. Gao, J., et al. 2009. Loss of NECL1, a novel tumor suppressor, can be restored in glioma by HDAC inhibitor-Trichostatin A through Sp1 binding site. *Glia* 57: 989-999.
7. Raveh, S., et al. 2009. The cell adhesion Nectin-like molecules (Necl) 1 and 4 suppress the growth and tumorigenic ability of colon cancer cells. *J. Cell. Biochem.* 108: 326-336.
8. Spiegel, I., et al. 2009. A novel method for isolating Schwann cells using the extracellular domain of Necl1. *J. Neurosci. Res.* 87: 3288-3296.
9. Yin, B., et al. 2009. Neural adhesion molecule NECL1 inhibits migration, invasion, and potentially induces differentiation of glioma cell. *Zhongguo Yi Xue Ke Xue Yuan Xue Bao* 31: 669-673.

CHROMOSOMAL LOCATION

Genetic locus: CADM3 (human) mapping to 1q23.2.

SOURCE

IGSF4B (K-16) is an affinity purified goat polyclonal antibody raised against a peptide mapping within an extracellular domain of IGSF4B of human origin.

PRODUCT

Each vial contains 200 µg IgG in 1.0 ml of PBS with < 0.1% sodium azide and 0.1% gelatin.

Blocking peptide available for competition studies, sc-103558 P, (100 µg peptide in 0.5 ml PBS containing < 0.1% sodium azide and 0.2% BSA).

APPLICATIONS

IGSF4B (K-16) is recommended for detection of IGSF4B of human origin by Western Blotting (starting dilution 1:200, dilution range 1:100-1:1000), immunoprecipitation [1-2 µg per 100-500 µg of total protein (1 ml of cell lysate)], immunofluorescence (starting dilution 1:50, dilution range 1:50-1:500) and solid phase ELISA (starting dilution 1:30, dilution range 1:30-1:3000); non cross-reactive with family members IGSF4C or IGSF4D.

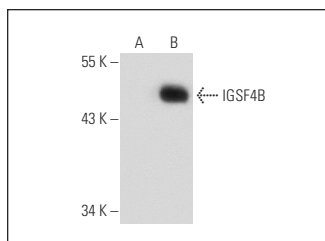
IGSF4B (K-16) is also recommended for detection of IGSF4B in additional species, including canine, bovine and porcine.

Suitable for use as control antibody for IGSF4B siRNA (h): sc-88048, IGSF4B shRNA Plasmid (h): sc-88048-SH and IGSF4B shRNA (h) Lentiviral Particles: sc-88048-V.

Molecular Weight of IGSF4B: 44 kDa.

Positive Controls: IGSF4B (h2): 293T Lysate: sc-173430.

DATA



IGSF4B (K-16): sc-103558. Western blot analysis of IGSF4B expression in non-transfected: sc-117752 (A) and human IGSF4B transfected: sc-173430 (B) 293T whole cell lysates.

STORAGE

Store at 4° C, ****DO NOT FREEZE****. Stable for one year from the date of shipment. Non-hazardous. No MSDS required.

RESEARCH USE

For research use only, not for use in diagnostic procedures.

PROTOCOLS

See our web site at www.scbt.com or our catalog for detailed protocols and support products.