

ARL9 (I-13): sc-104067

BACKGROUND

ADP-ribosylation factors (ARFs) are highly conserved guanine nucleotide binding proteins that enhance the ADP-ribosyltransferase activity of cholera toxin. ARFs are important in eukaryotic vesicular trafficking pathways, and they play an essential role in the activation of phospholipase D (PC-PLD). ARL9 (ADP-ribosylation factor-like protein 9) is a 187 amino acid protein that belongs to the RAS superfamily of regulatory GTPases. ARL9 contains a conserved interswitch toggle that places it evolutionarily closer to the Arf family. The gene encoding ARL9 maps to chromosome 4q12 in humans and 5 C3.3 in mouse.

REFERENCES

1. Pasqualato, S., Renault, L. and Cherfils, J. 2002. Arf, Arl, Arp and Sar proteins: a family of GTP-binding proteins with a structural device for front-back communication. *EMBO Rep.* 3: 1035-1041.
2. Sebald, E., Krueger, R., King, L.M., Cohn, D.H. and Krakow, D. 2003. Isolation of a new member of the ADP-ribosylation like factor gene family, ARL8, from a cartilage cDNA library. *Gene* 311: 147-151.
3. Louro, R., Nakaya, H.I., Paquola, A.C., Martins, E.A., da Silva, A.M., Verjovski-Almeida, S. and Reis, E.M. 2004. RASL11A, member of a novel small monomeric GTPase gene family, is down-regulated in prostate tumors. *Biochem. Biophys. Res. Commun.* 316: 618-627.
4. Okai, T., Araki, Y., Tada, M., Tateno, T., Kontani, K. and Katada, T. 2004. Novel small GTPase subfamily capable of associating with tubulin is required for chromosome segregation. *J. Cell. Sci.* 117 Pt 20: 4705-4715.
5. Kahn, R.A., Volpicelli-Daley, L., Bowzard, B., Shrivastava-Ranjan, P., Li, Y., Zhou, C. and Cunningham, L. 2005. Arf family GTPases: roles in membrane traffic and microtubule dynamics. *Biochem. Soc. Trans.* 33, Pt 6: 1269-1272.
6. Haraguchi, T., Yanaka, N., Nogusa, Y., Sumiyoshi, N., Eguchi, Y. and Kato, N. 2006. Expression of ADP-ribosylation factor-like protein 8B mRNA in the brain is down-regulated in mice fed a high-fat diet. *Biosci. Biotechnol. Biochem.* 70: 1798-1802.
7. Kahn, R.A., Cherfils, J., Elias, M., Lovering, R.C., Munro, S. and Schurmann, A. 2006. Nomenclature for the human Arf family of GTP-binding proteins: ARF, ARL, and SAR proteins. *J. Cell Biol.* 172: 645-650.
8. Hofmann, I. and Munro, S. 2006. An N-terminally acetylated Arf-like GTPase is localised to lysosomes and affects their motility. *J. Cell Sci.* 119, Pt 8: 1494-1503.

CHROMOSOMAL LOCATION

Genetic locus: Arl9 (mouse) mapping to 5 C3.3.

SOURCE

ARL9 (I-13) is an affinity purified goat polyclonal antibody raised against a peptide mapping within an internal region of ARL9 of mouse origin.

STORAGE

Store at 4° C, ****DO NOT FREEZE****. Stable for one year from the date of shipment. Non-hazardous. No MSDS required.

PRODUCT

Each vial contains 200 µg IgG in 1.0 ml of PBS with < 0.1% sodium azide and 0.1% gelatin.

Blocking peptide available for competition studies, sc-104067 P, (100 µg peptide in 0.5 ml PBS containing < 0.1% sodium azide and 0.2% BSA).

APPLICATIONS

ARL9 (I-13) is recommended for detection of ARL9 of mouse origin by Western Blotting (starting dilution 1:200, dilution range 1:100-1:1000), immunoprecipitation [1-2 µg per 100-500 µg of total protein (1 ml of cell lysate)], immunofluorescence (starting dilution 1:50, dilution range 1:50-1:500) and solid phase ELISA (starting dilution 1:30, dilution range 1:30-1:3000); non cross-reactive with other ARL family members.

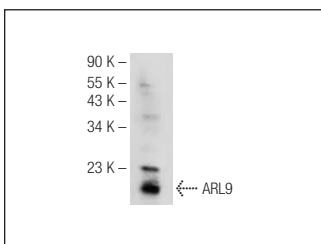
Suitable for use as control antibody for ARL9 siRNA (m): sc-105089, ARL9 shRNA Plasmid (m): sc-105089-SH and ARL9 shRNA (m) Lentiviral Particles: sc-105089-V.

Molecular Weight of ARL9: 21 kDa.

RECOMMENDED SECONDARY REAGENTS

To ensure optimal results, the following support (secondary) reagents are recommended: 1) Western Blotting: use donkey anti-goat IgG-HRP: sc-2020 (dilution range: 1:2000-1:100,000) or Cruz Marker™ compatible donkey anti-goat IgG-HRP: sc-2033 (dilution range: 1:2000-1:5000), Cruz Marker™ Molecular Weight Standards: sc-2035, TBS Blotto A Blocking Reagent: sc-2333 and Western Blotting Luminol Reagent: sc-2048. 2) Immunoprecipitation: use Protein A/G PLUS-Agarose: sc-2003 (0.5 ml agarose/2.0 ml). 3) Immunofluorescence: use donkey anti-goat IgG-FITC: sc-2024 (dilution range: 1:100-1:400) or donkey anti-goat IgG-TR: sc-2783 (dilution range: 1:100-1:400) with UltraCruz™ Mounting Medium: sc-24941.

DATA



ARL9 (I-13): sc-104067. Western blot analysis of ARL9 expression in mouse testes tissue extract.

RESEARCH USE

For research use only, not for use in diagnostic procedures.

PROTOCOLS

See our web site at www.scbt.com or our catalog for detailed protocols and support products.