

# ARL9 (S-15): sc-104069

## BACKGROUND

ADP-ribosylation factors (ARFs) are highly conserved guanine nucleotide binding proteins that enhance the ADP-ribosyltransferase activity of cholera toxin. ARFs are important in eukaryotic vesicular trafficking pathways, and they play an essential role in the activation of phospholipase D (PC-PLD). ARL9 (ADP-ribosylation factor-like protein 9) is a 187 amino acid protein that belongs to the RAS superfamily of regulatory GTPases. ARL9 contains a conserved interswitch toggle that places it evolutionarily closer to the Arf family. The gene encoding ARL9 maps to chromosome 4q12 in humans and 5 C3.3 in mouse.

## REFERENCES

1. Pasqualato, S., Renault, L. and Cherfils, J. 2002. Arf, Arl, Arp and Sar proteins: a family of GTP-binding proteins with a structural device for front-back communication. *EMBO Rep.* 3: 1035-1041.
2. Sebald, E., Krueger, R., King, L.M., Cohn, D.H. and Krakow, D. 2003. Isolation of a new member of the ADP-ribosylation like factor gene family, ARL8, from a cartilage cDNA library. *Gene* 311: 147-151.
3. Louro, R., Nakaya, H.I., Paquola, A.C., Martins, E.A., da Silva, A.M., Verjovski-Almeida, S. and Reis, E.M. 2004. RASL11A, member of a novel small monomeric GTPase gene family, is down-regulated in prostate tumors. *Biochem. Biophys. Res. Commun.* 316: 618-627.
4. Okai, T., Araki, Y., Tada, M., Tateno, T., Kontani, K. and Katada, T. 2004. Novel small GTPase subfamily capable of associating with tubulin is required for chromosome segregation. *J. Cell. Sci.* 117 Pt 20: 4705-4715.
5. Kahn, R.A., Volpicelli-Daley, L., Bowzard, B., Shrivastava-Ranjan, P., Li, Y., Zhou, C. and Cunningham, L. 2005. Arf family GTPases: roles in membrane traffic and microtubule dynamics. *Biochem. Soc. Trans.* 33, Pt 6: 1269-1272.
6. Haraguchi, T., Yanaka, N., Nogusa, Y., Sumiyoshi, N., Eguchi, Y. and Kato, N. 2006. Expression of ADP-ribosylation factor-like protein 8B mRNA in the brain is down-regulated in mice fed a high-fat diet. *Biosci. Biotechnol. Biochem.* 70: 1798-1802.
7. Kahn, R.A., Cherfils, J., Elias, M., Lovering, R.C., Munro, S. and Schurmann, A. 2006. Nomenclature for the human Arf family of GTP-binding proteins: ARF, ARL, and SAR proteins. *J. Cell Biol.* 172: 645-650.

## CHROMOSOMAL LOCATION

Genetic locus: Arl9 (rat) mapping to 14p11.

## SOURCE

ARL9 (S-15) is an affinity purified goat polyclonal antibody raised against a peptide mapping within an internal region of ARL9 of rat origin.

## STORAGE

Store at 4° C, **\*\*DO NOT FREEZE\*\***. Stable for one year from the date of shipment. Non-hazardous. No MSDS required.

## RESEARCH USE

For research use only, not for use in diagnostic procedures.

## PRODUCT

Each vial contains 200 µg IgG in 1.0 ml of PBS with < 0.1% sodium azide and 0.1% gelatin.

Blocking peptide available for competition studies, sc-104069 P, (100 µg peptide in 0.5 ml PBS containing < 0.1% sodium azide and 0.2% BSA).

## APPLICATIONS

ARL9 (S-15) is recommended for detection of ARL9 of rat and, to a lesser extent, mouse origin by Western Blotting (starting dilution 1:200, dilution range 1:100-1:1000), immunoprecipitation [1-2 µg per 100-500 µg of total protein (1 ml of cell lysate)], immunofluorescence (starting dilution 1:50, dilution range 1:50-1:500) and solid phase ELISA (starting dilution 1:30, dilution range 1:30-1:3000); non cross-reactive with other ARL family members.

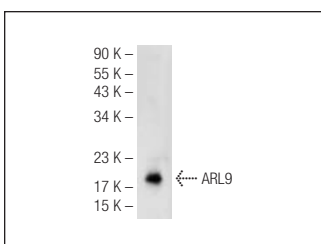
Suitable for use as control antibody for ARL9 siRNA (m): sc-105089, ARL9 shRNA Plasmid (m): sc-105089-SH and ARL9 shRNA (m) Lentiviral Particles: sc-105089-V.

Molecular Weight of ARL9: 21 kDa.

## RECOMMENDED SECONDARY REAGENTS

To ensure optimal results, the following support (secondary) reagents are recommended: 1) Western Blotting: use donkey anti-goat IgG-HRP: sc-2020 (dilution range: 1:2000-1:100,000) or Cruz Marker™ compatible donkey anti-goat IgG-HRP: sc-2033 (dilution range: 1:2000-1:5000), Cruz Marker™ Molecular Weight Standards: sc-2035, TBS Blotto A Blocking Reagent: sc-2333 and Western Blotting Luminol Reagent: sc-2048. 2) Immunoprecipitation: use Protein A/G PLUS-Agarose: sc-2003 (0.5 ml agarose/2.0 ml). 3) Immunofluorescence: use donkey anti-goat IgG-FITC: sc-2024 (dilution range: 1:100-1:400) or donkey anti-goat IgG-TR: sc-2783 (dilution range: 1:100-1:400) with UltraCruz™ Mounting Medium: sc-24941.

## DATA



ARL9 (S-15): sc-104069. Western blot analysis of ARL9 expression in mouse testes tissue extract.

## PROTOCOLS

See our web site at [www.scbt.com](http://www.scbt.com) or our catalog for detailed protocols and support products.