

# Arylsulfatase J (T-17): sc-104079

## BACKGROUND

Arylsulfatase J, also known as ARSJ, is a 599 amino acid secreted protein that belongs to the sulfatase family and uses calcium as a cofactor to catalyze the hydrolysis of sulfate esters from carbohydrates, proteoglycans, sulfated steroids and glycolipids. Via its catalytic activity, Arylsulfatase J may be involved in a variety of cellular processes, including the modulation of cell signaling, the degradation of macromolecules and hormone biosynthesis. The gene encoding Arylsulfatase J maps to human chromosome 4, which encodes nearly 6% of the human genome and has the largest gene deserts (regions of the genome with no protein encoding genes) of all of the human chromosomes. Defects in some of the genes located on chromosome 4 are associated with Huntington's disease, Ellis-van Creveld syndrome, methylmalonic acidemia and polycystic kidney disease.

## REFERENCES

1. Diez-Roux, G. and Ballabio, A. 2005. Sulfatases and human disease. *Annu. Rev. Genomics Hum. Genet.* 6: 355-379.
2. Sardiello, M., Annunziata, I., Roma, G. and Ballabio, A. 2005. Sulfatases and sulfatase modifying factors: an exclusive and promiscuous relationship. *Hum. Mol. Genet.* 14: 3203-3217.
3. Ghosh, D. 2005. Three-dimensional structures of sulfatases. *Meth. Enzymol.* 400: 273-293.
4. Obaya, A.J. 2006. Molecular cloning and initial characterization of three novel human sulfatases. *Gene* 372: 110-117.
5. Online Mendelian Inheritance in Man, OMIM™. 2006. Johns Hopkins University, Baltimore, MD. MIM Number: 610010. World Wide Web URL: <http://www.ncbi.nlm.nih.gov/omim/>
6. Ghosh, D. 2007. Human sulfatases: a structural perspective to catalysis. *Cell. Mol. Life Sci.* 64: 2013-2022.
7. Stack, E.C., Dedeoglu, A., Smith, K.M., Cormier, K., Kubilus, J.K., Bogdanov, M., Matson, W.R., Yang, L., Jenkins, B.G., Luthi-Carter, R., Kowall, N.W., Hersch, S.M., Beal, M.F. and Ferrante, R.J. 2007. Neuroprotective effects of synaptic modulation in Huntington's disease R6/2 mice. *J. Neurosci.* 27: 12908-12915.
8. Versteegh, F.G., Buma, S.A., Costin, G., de Jong, W.C. and Hennekam, R.C. 2007. EvC Working Party. Growth hormone analysis and treatment in Ellis-van Creveld syndrome. *Am. J. Med. Genet. A* 143: 2113-2121.

## CHROMOSOMAL LOCATION

Genetic locus: ARSJ (human) mapping to 4q26; Arsj (mouse) mapping to 3 G1.

## SOURCE

Arylsulfatase J (T-17) is an affinity purified goat polyclonal antibody raised against a peptide mapping within an internal region of Arylsulfatase J of human origin.

## STORAGE

Store at 4° C, **\*\*DO NOT FREEZE\*\***. Stable for one year from the date of shipment. Non-hazardous. No MSDS required.

## PRODUCT

Each vial contains 200 µg IgG in 1.0 ml of PBS with < 0.1% sodium azide and 0.1% gelatin.

Blocking peptide available for competition studies, sc-104079 P, (100 µg peptide in 0.5 ml PBS containing < 0.1% sodium azide and 0.2% BSA).

## APPLICATIONS

Arylsulfatase J (T-17) is recommended for detection of Arylsulfatase J of mouse, rat and human origin by Western Blotting (starting dilution 1:200, dilution range 1:100-1:1000), immunofluorescence (starting dilution 1:50, dilution range 1:50-1:500), immunohistochemistry (including paraffin-embedded sections) (starting dilution 1:50, dilution range 1:50-1:500) and solid phase ELISA (starting dilution 1:30, dilution range 1:30-1:3000); non cross-reactive with other Arylsulfatase family members.

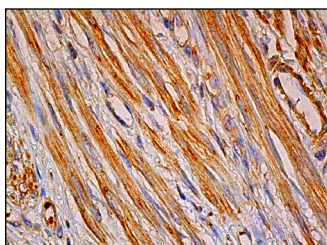
Suitable for use as control antibody for Arylsulfatase J siRNA (h): sc-88892, Arylsulfatase J siRNA (m): sc-141285, Arylsulfatase J shRNA Plasmid (h): sc-88892-SH, Arylsulfatase J shRNA Plasmid (m): sc-141285-SH, Arylsulfatase J shRNA (h) Lentiviral Particles: sc-88892-V and Arylsulfatase J shRNA (m) Lentiviral Particles: sc-141285-V.

Molecular Weight of Arylsulfatase J: 67 kDa.

## RECOMMENDED SECONDARY REAGENTS

To ensure optimal results, the following support (secondary) reagents are recommended: 1) Western Blotting: use donkey anti-goat IgG-HRP: sc-2020 (dilution range: 1:2000-1:100,000) or Cruz Marker™ compatible donkey anti-goat IgG-HRP: sc-2033 (dilution range: 1:2000-1:5000), Cruz Marker™ Molecular Weight Standards: sc-2035, TBS Blotto A Blocking Reagent: sc-2333 and Western Blotting Luminol Reagent: sc-2048. 2) Immunofluorescence: use donkey anti-goat IgG-FITC: sc-2024 (dilution range: 1:100-1:400) or donkey anti-goat IgG-TR: sc-2783 (dilution range: 1:100-1:400) with UltraCruz™ Mounting Medium: sc-24941. 3) Immunohistochemistry: use ImmunoCruz™: sc-2053 or ABC: sc-2023 goat IgG Staining Systems.

## DATA



Arylsulfatase J (T-17): sc-104079. Immunoperoxidase staining of formalin fixed, paraffin-embedded human smooth muscle tissue showing cytoplasmic staining of smooth muscle cells.

## RESEARCH USE

For research use only, not for use in diagnostic procedures.