

BZW2 (S-14): sc-104113

BACKGROUND

BZW2 (basic leucine zipper and W2 domains 2), also known as HSPC028 or MSTP017, is a 419 amino acid protein that contains one W2 domain and is thought to be involved in neuronal differentiation. The gene encoding BZW2 maps to human chromosome 7. Chromosome 7 houses over 1,000 genes and comprises nearly 5% of the human genome. Defects in some of the genes localized to chromosome 7 have been linked to osteogenesis imperfecta, Pendred syndrome, lissencephaly, citrullinemia and Shwachman-Diamond syndrome. The deletion of a portion of the q arm of chromosome 7 is associated with Williams-Beuren syndrome, a condition characterized by mild mental retardation, an unusual composure and friendliness with strangers and an elfin appearance. Deletions of portions of the q arm of chromosome 7 are also seen in a number of myeloid disorders, including cases of acute myelogenous leukemia and myelodysplasia.

REFERENCES

1. Tspouras, P., et al. 1983. Restriction fragment length polymorphism associated with the pro α 2(I) gene of human type I procollagen. Application to a family with an autosomal dominant form of osteogenesis imperfecta. *J. Clin. Invest.* 72: 1262-1267.
2. Liang, H., et al. 1998. Molecular anatomy of chromosome 7q deletions in myeloid neoplasms: evidence for multiple critical loci. *Proc. Natl. Acad. Sci. USA* 95: 3781-3785.
3. Hillier, L.W., et al. 2003. The DNA sequence of human chromosome 7. *Nature* 424: 157-164.
4. Eckert, M.A., et al. 2006. The neurobiology of Williams syndrome: cascading influences of visual system impairment? *Cell. Mol. Life Sci.* 63: 1867-1875.
5. Osborne, L.R., et al. 2006. Williams-Beuren syndrome diagnosis using fluorescence *in situ* hybridization. *Methods Mol. Med.* 126: 113-128.
6. Reiner, O., et al. 2006. Lissencephaly 1 linking to multiple diseases: mental retardation, neurodegeneration, schizophrenia, male sterility, and more. *Neuromolecular Med.* 8: 547-565.
7. Shimamura, A. 2006. Shwachman-Diamond syndrome. *Semin. Hematol.* 43: 178-188.

CHROMOSOMAL LOCATION

Genetic locus: BZW2 (human) mapping to 7p21.1; Bzw2 (mouse) mapping to 12 A3.

SOURCE

BZW2 (S-14) is an affinity purified goat polyclonal antibody raised against a peptide mapping within an internal region of BZW2 of human origin.

PRODUCT

Each vial contains 200 μ g IgG in 1.0 ml of PBS with < 0.1% sodium azide and 0.1% gelatin.

Blocking peptide available for competition studies, sc-104113 P, (100 μ g peptide in 0.5 ml PBS containing < 0.1% sodium azide and 0.2% BSA).

APPLICATIONS

BZW2 (S-14) is recommended for detection of BZW2 of mouse, rat and human origin by Western Blotting (starting dilution 1:200, dilution range 1:100-1:1000), immunoprecipitation [1-2 μ g per 100-500 μ g of total protein (1 ml of cell lysate)], immunofluorescence (starting dilution 1:50, dilution range 1:50-1:500) and solid phase ELISA (starting dilution 1:30, dilution range 1:30-1:3000); non cross-reactive with family member BZW1.

BZW2 (S-14) is also recommended for detection of BZW2 in additional species, including equine, canine, bovine and porcine.

Suitable for use as control antibody for BZW2 siRNA (h): sc-89797, BZW2 siRNA (m): sc-105133, BZW2 shRNA Plasmid (h): sc-89797-SH, BZW2 shRNA Plasmid (m): sc-105133-SH, BZW2 shRNA (h) Lentiviral Particles: sc-89797-V and BZW2 shRNA (m) Lentiviral Particles: sc-105133-V.

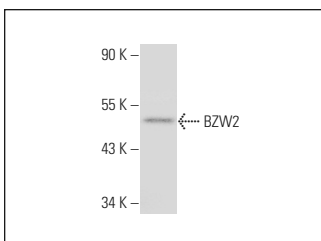
Molecular Weight of BZW2: 48 kDa.

Positive Controls: A-431 whole cell lysate: sc-2201.

RECOMMENDED SECONDARY REAGENTS

To ensure optimal results, the following support (secondary) reagents are recommended: 1) Western Blotting: use donkey anti-goat IgG-HRP: sc-2020 (dilution range: 1:2000-1:100,000) or Cruz Marker™ compatible donkey anti-goat IgG-HRP: sc-2033 (dilution range: 1:2000-1:5000), Cruz Marker™ Molecular Weight Standards: sc-2035, TBS Blotto A Blocking Reagent: sc-2333 and Western Blotting Luminol Reagent: sc-2048. 2) Immunoprecipitation: use Protein A/G PLUS-Agarose: sc-2003 (0.5 ml agarose/2.0 ml). 3) Immunofluorescence: use donkey anti-goat IgG-FITC: sc-2024 (dilution range: 1:100-1:400) or donkey anti-goat IgG-TR: sc-2783 (dilution range: 1:100-1:400) with UltraCruz™ Mounting Medium: sc-24941.

DATA



BZW2 (S-14): sc-104113. Western blot analysis of BZW2 expression in A-431 whole cell lysate.

STORAGE

Store at 4° C, **DO NOT FREEZE**. Stable for one year from the date of shipment. Non-hazardous. No MSDS required.

RESEARCH USE

For research use only, not for use in diagnostic procedures.

PROTOCOLS

See our web site at www.scbt.com or our catalog for detailed protocols and support products.