

COMMD4 (S-13): sc-104155

BACKGROUND

COMMD family members are a group of evolutionary conserved proteins that share a common COMM domain at the extreme C-terminus, which provides an interface for protein-protein interactions. Of the ten family members, the role of COMMD1, also known as MURR1, is best characterized, functioning to inhibit TNF-induced NF κ B p50 and to facilitate biliary copper excretion within hepatocytes. Most, if not all, COMMD proteins have been found to play a role in the regulation of NF κ B and, despite their similarities, seem to function in unique and non-redundant pathways. COMMD proteins may also play a role in the function of epithelial sodium channels, cell proliferation, copper homeostasis and in the regulation of the ubiquitin pathway. COMMD4 is a 199 amino acid member of the COMMD family. Two named isoforms of COMMD4 exist as a result of alternative splicing events.

REFERENCES

1. Online Mendelian Inheritance in Man, OMIM™. 2002. Johns Hopkins University, Baltimore, MD. MIM Number: 607238. World Wide Web URL: <http://www.ncbi.nlm.nih.gov/omim/>
2. Klomp, A.E., et al. 2003. The ubiquitously expressed MURR1 protein is absent in canine copper toxicosis. *J. Hepatol.* 39: 703-709.
3. Coronado, V.A., et al. 2005. COMMD1 (MURR1) as a candidate in patients with copper storage disease of undefined etiology. *Clin. Genet.* 68: 548-551.
4. Burstein, E., et al. 2005. COMMD proteins, a novel family of structural and functional homologs of MURR1. *J. Biol. Chem.* 280: 22222-22232.
5. de Bie, P., et al. 2005. The many faces of the copper metabolism protein MURR1/COMMD1. *J. Hered.* 96: 803-811.
6. de Bie, P., et al. 2007. Distinct Wilson's disease mutations in ATP7B are associated with enhanced binding to COMMD1 and reduced stability of ATP7B. *Gastroenterology* 133: 1316-1326.
7. Narindrasorasak, S., et al. 2007. Characterization and copper binding properties of human COMMD1 (MURR1). *Biochemistry* 46: 3116-3128.
8. Sommerhalter, M., et al. 2007. Solution structure of the COMMD1 N-terminal domain. *J. Mol. Biol.* 365: 715-721.

CHROMOSOMAL LOCATION

Genetic locus: COMMD4 (human) mapping to 15q24.2; Commd4 (mouse) mapping to 9 B.

SOURCE

COMMD4 (S-13) is an affinity purified goat polyclonal antibody raised against a peptide mapping within an internal region of COMMD4 of human origin.

PRODUCT

Each vial contains 200 μ g IgG in 1.0 ml of PBS with < 0.1% sodium azide and 0.1% gelatin.

Blocking peptide available for competition studies, sc-104155 P, (100 μ g peptide in 0.5 ml PBS containing < 0.1% sodium azide and 0.2% BSA).

APPLICATIONS

COMMD4 (S-13) is recommended for detection of COMMD4 of mouse, rat and human origin by Western Blotting (starting dilution 1:200, dilution range 1:100-1:1000), immunoprecipitation [1-2 μ g per 100-500 μ g of total protein (1 ml of cell lysate)], immunofluorescence (starting dilution 1:50, dilution range 1:50-1:500) and solid phase ELISA (starting dilution 1:30, dilution range 1:30-1:3000).

Suitable for use as control antibody for COMMD4 siRNA (h): sc-90146, COMMD4 siRNA (m): sc-105230, COMMD4 shRNA Plasmid (h): sc-90146-SH, COMMD4 shRNA Plasmid (m): sc-105230-SH, COMMD4 shRNA (h) Lentiviral Particles: sc-90146-V and COMMD4 shRNA (m) Lentiviral Particles: sc-105230-V.

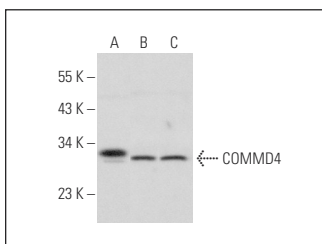
Molecular Weight of COMMD4: 22 kDa.

Positive Controls: NIH/3T3 whole cell lysate: sc-2210, KNRK whole cell lysate: sc-2214 or PC-12 cell lysate: sc-2250.

RECOMMENDED SECONDARY REAGENTS

To ensure optimal results, the following support (secondary) reagents are recommended: 1) Western Blotting: use donkey anti-goat IgG-HRP: sc-2020 (dilution range: 1:2000-1:100,000) or Cruz Marker™ compatible donkey anti-goat IgG-HRP: sc-2033 (dilution range: 1:2000-1:5000), Cruz Marker™ Molecular Weight Standards: sc-2035, TBS Blotto A Blocking Reagent: sc-2333 and Western Blotting Luminol Reagent: sc-2048. 2) Immunoprecipitation: use Protein A/G PLUS-Agarose: sc-2003 (0.5 ml agarose/2.0 ml). 3) Immunofluorescence: use donkey anti-goat IgG-FITC: sc-2024 (dilution range: 1:100-1:400) or donkey anti-goat IgG-TR: sc-2783 (dilution range: 1:100-1:400) with UltraCruz™ Mounting Medium: sc-24941.

DATA



COMMD4 (S-13): sc-104155. Western blot analysis of COMMD4 expression in NIH/3T3 (A), KNRK (B) and PC-12 (C) whole cell lysates.

STORAGE

Store at 4° C, **DO NOT FREEZE**. Stable for one year from the date of shipment. Non-hazardous. No MSDS required.

RESEARCH USE

For research use only, not for use in diagnostic procedures.