

COMMD8 (N-15): sc-104159

BACKGROUND

COMMD family members are a group of evolutionary conserved proteins that share a common COMM domain at the extreme C-terminus, which provides an interface for protein-protein interactions. Of the ten family members, the role of COMMD1, also known as MURR1, is best characterized, functioning to inhibit TNF-induced NF κ B p50 and to facilitate biliary copper excretion within hepatocytes. Most, if not all, COMMD proteins have been found to play a role in the regulation of NF κ B and, despite their similarities, seem to function in unique and non-redundant pathways. COMMD proteins may also play a role in the function of epithelial sodium channels, cell proliferation, copper homeostasis and in the regulation of the ubiquitin pathway. COMM domain-containing protein 8 is a 183 amino acid protein that is widely expressed with highest expression in thyroid.

CHROMOSOMAL LOCATION

Genetic locus: COMMD8 (human) mapping to 4p12; Commd8 (mouse) mapping to 5 C3.2.

SOURCE

COMMD8 (N-15) is an affinity purified goat polyclonal antibody raised against a peptide mapping at the N-terminus of COMMD8 of human origin.

PRODUCT

Each vial contains 200 μ g IgG in 1.0 ml of PBS with < 0.1% sodium azide and 0.1% gelatin.

Blocking peptide available for competition studies, sc-104159 P, (100 μ g peptide in 0.5 ml PBS containing < 0.1% sodium azide and 0.2% BSA).

STORAGE

Store at 4° C, ****DO NOT FREEZE****. Stable for one year from the date of shipment. Non-hazardous. No MSDS required.

APPLICATIONS

COMMD8 (N-15) is recommended for detection of COMMD8 of mouse, rat and human origin by Western Blotting (starting dilution 1:200, dilution range 1:100-1:1000), immunoprecipitation [1-2 μ g per 100-500 μ g of total protein (1 ml of cell lysate)], immunofluorescence (starting dilution 1:50, dilution range 1:50-1:500) and solid phase ELISA (starting dilution 1:30, dilution range 1:30-1:3000); non cross-reactive with other COMMD family members.

COMMD8 (N-15) is also recommended for detection of COMMD8 in additional species, including equine, canine, bovine and porcine.

Suitable for use as control antibody for COMMD8 siRNA (h): sc-89035, COMMD8 siRNA (m): sc-105231, COMMD8 shRNA Plasmid (h): sc-89035-SH, COMMD8 shRNA Plasmid (m): sc-105231-SH, COMMD8 shRNA (h) Lentiviral Particles: sc-89035-V and COMMD8 shRNA (m) Lentiviral Particles: sc-105231-V.

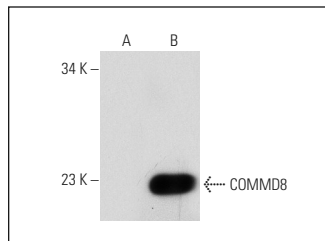
Molecular Weight of COMMD8: 21 kDa.

Positive Controls: COMMD8 (h): 293T Lysate: sc-113950, mouse thyroid extract: sc-2407 or COMMD8 (m): 293T Lysate: sc-119380.

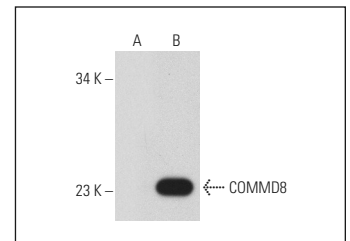
RECOMMENDED SECONDARY REAGENTS

To ensure optimal results, the following support (secondary) reagents are recommended: 1) Western Blotting: use donkey anti-goat IgG-HRP: sc-2020 (dilution range: 1:2000-1:100,000) or Cruz Marker™ compatible donkey anti-goat IgG-HRP: sc-2033 (dilution range: 1:2000-1:5000), Cruz Marker™ Molecular Weight Standards: sc-2035, TBS Blotto A Blocking Reagent: sc-2333 and Western Blotting Luminol Reagent: sc-2048. 2) Immunoprecipitation: use Protein A/G PLUS-Agarose: sc-2003 (0.5 ml agarose/2.0 ml). 3) Immunofluorescence: use donkey anti-goat IgG-FITC: sc-2024 (dilution range: 1:100-1:400) or donkey anti-goat IgG-TR: sc-2783 (dilution range: 1:100-1:400) with UltraCruz™ Mounting Medium: sc-24941.

DATA



COMMD8 (N-15): sc-104159. Western blot analysis of COMMD8 expression in non-transfected: sc-117752 (A) and human COMMD8 transfected: sc-113950 (B) 293T whole cell lysates.



COMMD8 (N-15): sc-104159. Western blot analysis of COMMD8 expression in non-transfected: sc-117752 (A) and mouse COMMD8 transfected: sc-119380 (B) 293T whole cell lysates.

RESEARCH USE

For research use only, not for use in diagnostic procedures.

PROTOCOLS

See our web site at www.scbt.com or our catalog for detailed protocols and support products.



Try **COMMD8 (F-1): sc-373869** or **COMMD8 (D-7): sc-514188**, our highly recommended monoclonal alternatives to COMMD8 (N-15).