

# PACSIN2 (M-19): sc-10417

## BACKGROUND

PACSINs are members of a family of cytoplasmic adapter proteins, which share a conserved C-terminal protein binding SH3 domain and a CDC15-NT domain. PACSIN 1-related proteins include syndapin 1 (the rat homolog of PACSIN 1), FAP52, EM13, and PSTPIP, all of which seem to be involved in signaling pathways associated with cytoskeletal organization. PACSIN 1 expression is restricted to terminally differentiated neural tissue, whereas PACSIN 2 is widely expressed. PACSIN 2 shows vesicle-like distribution and may be involved in regulating endocytotic processes.

## CHROMOSOMAL LOCATION

Genetic locus: PACSIN2 (human) mapping to 22q13.2; Pacsin2 (mouse) mapping to 15 E1.

## SOURCE

PACSIN2 (M-19) is an affinity purified goat polyclonal antibody raised against a peptide mapping near the C-terminus of PACSIN2 of mouse origin.

## PRODUCT

Each vial contains 200 µg IgG in 1.0 ml of PBS with < 0.1% sodium azide and 0.1% gelatin.

Blocking peptide available for competition studies, sc-10417 P, (100 µg peptide in 0.5 ml PBS containing < 0.1% sodium azide and 0.2% BSA).

## STORAGE

Store at 4° C, **\*\*DO NOT FREEZE\*\***. Stable for one year from the date of shipment. Non-hazardous. No MSDS required.

## RESEARCH USE

For research use only, not for use in diagnostic procedures.

## APPLICATIONS

PACSIN2 (M-19) is recommended for detection of PACSIN2 of mouse, rat and human origin by Western Blotting (starting dilution 1:200, dilution range 1:100-1:1000), immunoprecipitation [1-2 µg per 100-500 µg of total protein (1 ml of cell lysate)], immunofluorescence (starting dilution 1:50, dilution range 1:50-1:500) and solid phase ELISA (starting dilution 1:30, dilution range 1:30-1:3000).

PACSIN2 (M-19) is also recommended for detection of PACSIN2 in additional species, including canine, bovine and porcine.

Suitable for use as control antibody for PACSIN2 siRNA (h): sc-36173, PACSIN2 siRNA (m): sc-36174, PACSIN2 shRNA Plasmid (h): sc-36173-SH, PACSIN2 shRNA Plasmid (m): sc-36174-SH, PACSIN2 shRNA (h) Lentiviral Particles: sc-36173-V and PACSIN2 shRNA (m) Lentiviral Particles: sc-36174-V.

Molecular Weight (predicted) of PACSIN2 isoform 1/2: 56/51 kDa.

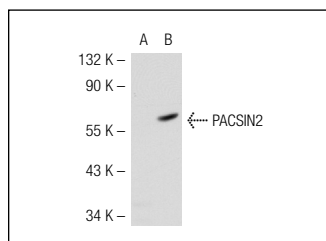
Molecular Weight (observed) of PACSIN2: 65 kDa.

Positive Controls: PACSIN2 (m): 293T Lysate: sc-122349, mouse lung extract: sc-2390 or NIH/3T3 whole cell lysate: sc-2210.

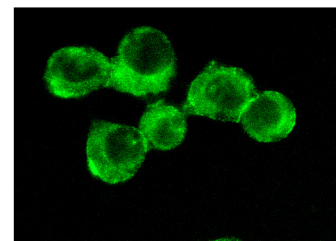
## RECOMMENDED SECONDARY REAGENTS

To ensure optimal results, the following support (secondary) reagents are recommended: 1) Western Blotting: use donkey anti-goat IgG-HRP: sc-2020 (dilution range: 1:2000-1:100,000) or Cruz Marker™ compatible donkey anti-goat IgG-HRP: sc-2033 (dilution range: 1:2000-1:5000), Cruz Marker™ Molecular Weight Standards: sc-2035, TBS Blotto A Blocking Reagent: sc-2333 and Western Blotting Luminol Reagent: sc-2048. 2) Immunoprecipitation: use Protein A/G PLUS-Agarose: sc-2003 (0.5 ml agarose/ 2.0 ml). 3) Immunofluorescence: use donkey anti-goat IgG-FITC: sc-2024 (dilution range: 1:100-1:400) or donkey anti-goat IgG-TR: sc-2783 (dilution range: 1:100-1:400) with UltraCruz™ Mounting Medium: sc-24941.

## DATA



PACSIN2 (M-19): sc-10417. Western blot analysis of PACSIN2 expression in non-transfected: sc-117752 (A) and mouse PACSIN2 transfected: sc-122349 (B) 293T whole cell lysates.



PACSIN2 (M-19): sc-10417. Immunofluorescence staining of methanol-fixed NIH/3T3 cells showing cytoplasmic staining.

## SELECT PRODUCT CITATIONS

1. Roach, W., et al. 2007. PACSIN3 overexpression increases adipocyte glucose transport through Glut1. *Biochem. Biophys. Res. Commun.* 355: 745-750.

## PROTOCOLS

See our web site at [www.scbt.com](http://www.scbt.com) or our catalog for detailed protocols and support products.

**MONOS**  
Satisfaction  
Guaranteed

Try **PACSIN2 (F-12): sc-390136**, our highly recommended monoclonal alternative to PACSIN2 (M-19).