

# MRP-S21 (T-16): sc-104418

## BACKGROUND

Mitochondrial ribosomes consist of a large 39S subunit and a small 28S subunit, both of which are comprised of multiple mitochondrial ribosomal proteins (MRPs) that are encoded by nuclear genes and are essential for protein synthesis within mitochondria. MRP-S21 (mitochondrial ribosomal protein S21), also known as RPMS21, is an 87 amino acid protein that localizes to the mitochondrion, where it exists as a component of the 28S ribosomal subunit and works in conjunction with other MRPs to mediate protein synthesis. The gene encoding MRP-S21 maps to human chromosome 1, which spans about 260 million base pairs and comprises nearly 8% of the human genome.

## REFERENCES

1. Kenmochi, N., et al. 2001. The human mitochondrial ribosomal protein genes: mapping of 54 genes to the chromosomes and implications for human disorders. *Genomics* 77: 65-70.
2. Cavdar Koc, E., et al. 2001. The small subunit of the mammalian mitochondrial ribosome. Identification of the full complement of ribosomal proteins present. *J. Biol. Chem.* 276: 19363-19374.
3. Suzuki, T., et al. 2001. Proteomic analysis of the mammalian mitochondrial ribosome. Identification of protein components in the 28 S small subunit. *J. Biol. Chem.* 276: 33181-33195.

## CHROMOSOMAL LOCATION

Genetic locus: MRPS21 (human) mapping to 1q21.2.

## SOURCE

MRP-S21 (T-16) is an affinity purified goat polyclonal antibody raised against a peptide mapping within an internal region of MRP-S21 of human origin.

## PRODUCT

Each vial contains 200 µg IgG in 1.0 ml of PBS with < 0.1% sodium azide and 0.1% gelatin.

Blocking peptide available for competition studies, sc-104418 P, (100 µg peptide in 0.5 ml PBS containing < 0.1% sodium azide and 0.2% BSA).

## APPLICATIONS

MRP-S21 (T-16) is recommended for detection of MRP-S21 of human and rat origin by Western Blotting (starting dilution 1:200, dilution range 1:100-1:1000), immunoprecipitation [1-2 µg per 100-500 µg of total protein (1 ml of cell lysate)], immunofluorescence (starting dilution 1:50, dilution range 1:50-1:500) and solid phase ELISA (starting dilution 1:30, dilution range 1:30-1:3000); non cross-reactive with other MRP-S family members.

Suitable for use as control antibody for MRP-S21 siRNA (h): sc-88723, MRP-S21 shRNA Plasmid (h): sc-88723-SH and MRP-S21 shRNA (h) Lentiviral Particles: sc-88723-V.

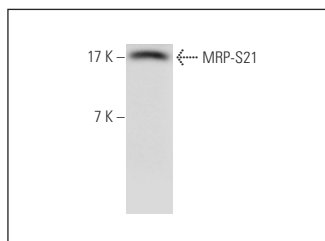
Molecular Weight of MRP-S21: 11 kDa.

Positive Controls: HeLa whole cell lysate: sc-2200 or L8 cell lysate: sc-3807.

## RECOMMENDED SECONDARY REAGENTS

To ensure optimal results, the following support (secondary) reagents are recommended: 1) Western Blotting: use donkey anti-goat IgG-HRP: sc-2020 (dilution range: 1:2000-1:100,000) or Cruz Marker™ compatible donkey anti-goat IgG-HRP: sc-2033 (dilution range: 1:2000-1:5000), Cruz Marker™ Molecular Weight Standards: sc-2035, TBS Blotto A Blocking Reagent: sc-2333 and Western Blotting Luminol Reagent: sc-2048. 2) Immunoprecipitation: use Protein A/G PLUS-Agarose: sc-2003 (0.5 ml agarose/2.0 ml). 3) Immunofluorescence: use donkey anti-goat IgG-FITC: sc-2024 (dilution range: 1:100-1:400) or donkey anti-goat IgG-TR: sc-2783 (dilution range: 1:100-1:400) with UltraCruz™ Mounting Medium: sc-24941.

## DATA



MRP-S21 (T-16): sc-104418. Western blot analysis of MRP-S21 expression in HeLa whole cell lysate.

## STORAGE

Store at 4° C, **\*\*DO NOT FREEZE\*\***. Stable for one year from the date of shipment. Non-hazardous. No MSDS required.

## RESEARCH USE

For research use only, not for use in diagnostic procedures.

## PROTOCOLS

See our web site at [www.scbt.com](http://www.scbt.com) or our catalog for detailed protocols and support products.