

PGRMC2 (N-13): sc-104609

BACKGROUND

PGRMC2 (progesterone receptor membrane component 2), also known as DG6 (steroid receptor protein DG6) or PMBP (progesterone membrane-binding protein), is a single pass membrane protein belonging to the cytochrome b5 family (MAPR (membrane associated progesterone receptor) subfamily). Expressed in sperm, PGRMC2 is believed to function as a steroid receptor and may participate in the progesterone-dependent sperm acrosome reaction. PGRMC2 shares approximately 50% overall sequence identity with its close relative PGRMC1. The loss of the gene encoding PGRMC2 is associated with metastasis in uterine endocervical adenocarcinomas, implicating a potential role of PGRMC2 in the suppression of metastasis of endocervical adenocarcinomas.

CHROMOSOMAL LOCATION

Genetic locus: PGRMC2 (human) mapping to 4q28.2; Pgrmc2 (mouse) mapping to 3 B.

SOURCE

PGRMC2 (N-13) is an affinity purified goat polyclonal antibody raised against a peptide mapping near the N-terminus of PGRMC2 of human origin.

PRODUCT

Each vial contains 100 µg IgG in 1.0 ml of PBS with < 0.1% sodium azide and 0.1% gelatin.

Blocking peptide available for competition studies, sc-104609 P, (100 µg peptide in 0.5 ml PBS containing < 0.1% sodium azide and 0.2% BSA).

STORAGE

Store at 4° C, ****DO NOT FREEZE****. Stable for one year from the date of shipment. Non-hazardous. No MSDS required.

APPLICATIONS

PGRMC2 (N-13) is recommended for detection of PGRMC2 of mouse, rat and human origin by Western Blotting (starting dilution 1:200, dilution range 1:100-1:1000), immunoprecipitation [1-2 µg per 100-500 µg of total protein (1 ml of cell lysate)], immunofluorescence (starting dilution 1:50, dilution range 1:50-1:500), immunohistochemistry (including paraffin-embedded sections) (starting dilution 1:50, dilution range 1:50-1:500) and solid phase ELISA (starting dilution 1:30, dilution range 1:30-1:3000).

PGRMC2 (N-13) is also recommended for detection of PGRMC2 in additional species, including equine, canine and porcine.

Suitable for use as control antibody for PGRMC2 siRNA (h): sc-88944, PGRMC2 siRNA (m): sc-106403, PGRMC2 shRNA Plasmid (h): sc-88944-SH, PGRMC2 shRNA Plasmid (m): sc-106403-SH, PGRMC2 shRNA (h) Lentiviral Particles: sc-88944-V and PGRMC2 shRNA (m) Lentiviral Particles: sc-106403-V.

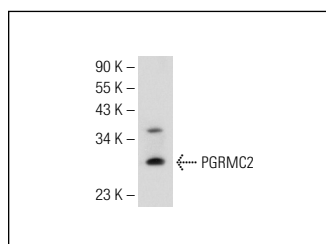
Molecular Weight of PGRMC2: 24 kDa.

Positive Controls: HeLa whole cell lysate: sc-2200.

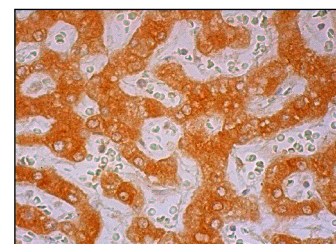
RECOMMENDED SECONDARY REAGENTS

To ensure optimal results, the following support (secondary) reagents are recommended: 1) Western Blotting: use donkey anti-goat IgG-HRP: sc-2020 (dilution range: 1:2000-1:100,000) or Cruz Marker™ compatible donkey anti-goat IgG-HRP: sc-2033 (dilution range: 1:2000-1:5000), Cruz Marker™ Molecular Weight Standards: sc-2035, TBS Blotto A Blocking Reagent: sc-2333 and Western Blotting Luminol Reagent: sc-2048. 2) Immunoprecipitation: use Protein A/G PLUS-Agarose: sc-2003 (0.5 ml agarose/2.0 ml). 3) Immunofluorescence: use donkey anti-goat IgG-FITC: sc-2024 (dilution range: 1:100-1:400) or donkey anti-goat IgG-TR: sc-2783 (dilution range: 1:100-1:400) with UltraCruz™ Mounting Medium: sc-24941. 4) Immunohistochemistry: use ImmunoCruz™: sc-2053 or ABC: sc-2023 goat IgG Staining Systems.

DATA



PGRMC2 (N-13): sc-104609. Western blot analysis of PGRMC2 expression in HeLa whole cell lysate.



PGRMC2 (N-13): sc-104609. Immunoperoxidase staining of formalin fixed, paraffin-embedded human liver tissue showing cytoplasmic staining of hepatocytes.

RESEARCH USE

For research use only, not for use in diagnostic procedures.

PROTOCOLS

See our web site at www.scbt.com or our catalog for detailed protocols and support products.

MONOS
Satisfaction
Guaranteed

Try **PGRMC2 (F-3): sc-374624** or **PGRMC2 (134.6): sc-100904**, our highly recommended monoclonal alternatives to PGRMC2 (N-13).