

# POU6F2 (M-17): sc-104627

## BACKGROUND

Tissue-restricted POU domain transcription factors play roles in cellular differentiation and the development of several organs. POU6F2 (POU class 6 homeobox 2), also known as RPF-1 (retina-derived POU domain factor 1), WT5 or WTSL, is a 683 amino acid nuclear protein expressed exclusively in the central nervous system (CNS). POU6F2 localizes to neurons of the dorsal hypothalamus, as well as retinal cells, where it is thought to function as a transcription factor during early amacrine and ganglion cell differentiation. Existing as two alternatively spliced isoforms, POU6F2 contains one homeobox DNA-binding domain, a single POU-specific domain, and is encoded by a gene that maps to human chromosome 7p14.1. POU6F2 defects are associated with Wilms tumor 5 (WT5).

## REFERENCES

1. Zhou, H., Yoshioka, T. and Nathans, J. 1996. Retina-derived POU-domain factor-1: a complex POU-domain gene implicated in the development of retinal ganglion and amacrine cells. *J. Neurosci.* 16: 2261-2274.
2. Phillips, K. and Luisi, B. 2000. The virtuoso of versatility: POU proteins that flex to fit. *J. Mol. Biol.* 302: 1023-1039.
3. Perotti, D., Testi, M.A., Mondini, P., Pilotti, S., Green, E.D., Pession, A., Sozzi, G., Pierotti, M.A., Fossati-Bellani, F. and Radice, P. 2001. Refinement within single yeast artificial chromosome clones of a minimal region commonly deleted on the short arm of chromosome 7 in Wilms tumours. *Genes Chromosomes Cancer.* 31: 42-47.
4. Perotti, D., De Vecchi, G., Testi, M.A., Lualdi, E., Modena, P., Mondini, P., Ravagnani, F., Collini, P., Di Renzo, F., Spreafico, F., Terenziani, M., Sozzi, G., Fossati-Bellani, F. and Radice, P. 2004. Germline mutations of the POU6F2 gene in Wilms tumors with loss of heterozygosity on chromosome 7p14. *Hum. Mutat.* 24: 400-407.
5. Perotti, D., Vecchi, G.D., Lualdi, E., Testi, M.A., Sozzi, G., Collini, P., Spreafico, F., Terenziani, M., Fossati-Bellani, F. and Radice, P. 2005. Wilms tumor in monozygous twins: clinical, pathological, cytogenetic and molecular case report. *J. Pediatr. Hematol. Oncol.* 27: 521-525.

## CHROMOSOMAL LOCATION

Genetic locus: Pou6f2 (mouse) mapping to 13 A2.

## SOURCE

POU6F2 (M-17) is an affinity purified goat polyclonal antibody raised against a peptide mapping at the C-terminus of POU6F2 of mouse origin.

## PRODUCT

Each vial contains 200 µg IgG in 1.0 ml of PBS with < 0.1% sodium azide and 0.1% gelatin.

Blocking peptide available for competition studies, sc-104627 P, (100 µg peptide in 0.5 ml PBS containing < 0.1% sodium azide and 0.2% BSA).

Available as TransCruz reagent for Gel Supershift and ChIP applications, sc-104627 X, 200 µg/0.1 ml.

## APPLICATIONS

POU6F2 (M-17) is recommended for detection of POU6F2 of mouse and rat origin by Western Blotting (starting dilution 1:200, dilution range 1:100-1:1000), immunoprecipitation [1-2 µg per 100-500 µg of total protein (1 ml of cell lysate)], immunofluorescence (starting dilution 1:50, dilution range 1:50-1:500) and solid phase ELISA (starting dilution 1:30, dilution range 1:30-1:3000).

Suitable for use as control antibody for POU6F2 siRNA (m): sc-152394, POU6F2 shRNA Plasmid (m): sc-152394-SH and POU6F2 shRNA (m) Lentiviral Particles: sc-152394-V.

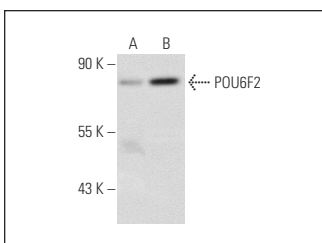
POU6F2 (M-17) X TransCruz antibody is recommended for Gel Supershift and ChIP applications.

Molecular Weight of POU6F2: 72 kDa.

## RECOMMENDED SECONDARY REAGENTS

To ensure optimal results, the following support (secondary) reagents are recommended: 1) Western Blotting: use donkey anti-goat IgG-HRP: sc-2020 (dilution range: 1:2000-1:100,000) or Cruz Marker™ compatible donkey anti-goat IgG-HRP: sc-2033 (dilution range: 1:2000-1:5000), Cruz Marker™ Molecular Weight Standards: sc-2035, TBS Blotto A Blocking Reagent: sc-2333 and Western Blotting Luminol Reagent: sc-2048. 2) Immunoprecipitation: use Protein A/G PLUS-Agarose: sc-2003 (0.5 ml agarose/2.0 ml). 3) Immunofluorescence: use donkey anti-goat IgG-FITC: sc-2024 (dilution range: 1:100-1:400) or donkey anti-goat IgG-TR: sc-2783 (dilution range: 1:100-1:400) with UltraCruz™ Mounting Medium: sc-24941.

## DATA



POU6F2 (M-17): sc-104627. Western blot analysis of POU6F2 expression in non-transfected: sc-117752 (A) and human POU6F2 transfected: sc-175222 (B) 293T whole cell lysates.

## RESEARCH USE

For research use only, not for use in diagnostic procedures.

## PROTOCOLS

See our web site at [www.scbt.com](http://www.scbt.com) or our catalog for detailed protocols and support products.