

TBL2 (L-15): sc-104692

BACKGROUND

Transducin β -like protein 2 (TBL2), also known as WS β -transducin repeats protein, is a 447 amino acid protein belonging to the β transducin family. The mutations in the gene encoding TBL2 has been shown to cause certain cardiovascular and musculo-skeletal abnormalities observed in Williams-Beuren syndrome (WBS). WBS is an autosomal dominant developmental disorder that is characterized by supravalvular aortic stenosis (SVAS), multiple peripheral pulmonary arterial stenoses, elfin face, mental and statural deficiency, characteristic dental malformation and infantile hypercalcemia. It is a contiguous gene deletion syndrome caused by deletion of multiple genes at 7q11.23. Other genes involved in WBS include elastin, RFC2, LIMK-1 and FKBP6.

REFERENCES

- Meng, X., et al. 1998. Complete physical map of the common deletion region in Williams syndrome and identification and characterization of three novel genes. *Hum. Genet.* 103: 590-599.
- Perez Jurado, L.A., et al. 1999. TBL2, a novel transducin family member in the WBS deletion: characterization of the complete sequence, genomic structure, transcriptional variants and the mouse ortholog. *Cytogenet. Cell Genet.* 86: 277-284.
- van Hagen, J.M., et al. 2001. Williams syndrome: new insights into genetic etiology, pathogenesis and clinical aspects. *Ned. Tijdschr. Geneesk.* 145: 396-400.
- Sugayama, S.M., et al. 2007. Williams Syndrome: development of a new scoring system for clinical diagnosis. *Clinics* 62: 159-166.
- van Hagen, J.M., et al. 2007. Comparing two diagnostic laboratory tests for Williams syndrome: fluorescent *in situ* hybridization versus multiplex ligation-dependent probe amplification. *Genet. Test.* 11: 321-327.
- Wang, J., et al. 2008. Polygenic determinants of severe hypertriglyceridemia. *Hum. Mol. Genet.* 17: 2894-2899.
- Kathiresan, S., et al. 2008. Six new loci associated with blood low-density lipoprotein cholesterol, high-density lipoprotein cholesterol or triglycerides in humans. *Nat. Genet.* 40: 189-197.

CHROMOSOMAL LOCATION

Genetic locus: TBL2 (human) mapping to 7q11.23; Tbl2 (mouse) mapping to 5 G2.

SOURCE

TBL2 (L-15) is an affinity purified goat polyclonal antibody raised against a peptide mapping near the C-terminus of TBL2 of human origin.

STORAGE

Store at 4° C, ****DO NOT FREEZE****. Stable for one year from the date of shipment. Non-hazardous. No MSDS required.

PROTOCOLS

See our web site at www.scbt.com or our catalog for detailed protocols and support products.

PRODUCT

Each vial contains 200 μ g IgG in 1.0 ml of PBS with < 0.1% sodium azide and 0.1% gelatin.

Blocking peptide available for competition studies, sc-104692 P, (100 μ g peptide in 0.5 ml PBS containing < 0.1% sodium azide and 0.2% BSA).

APPLICATIONS

TBL2 (L-15) is recommended for detection of TBL2 of mouse, rat and human origin by Western Blotting (starting dilution 1:200, dilution range 1:100-1:1000), immunoprecipitation [1-2 μ g per 100-500 μ g of total protein (1 ml of cell lysate)], immunofluorescence (starting dilution 1:50, dilution range 1:50-1:500) and solid phase ELISA (starting dilution 1:30, dilution range 1:30-1:3000); non cross-reactive with other TBL family members.

TBL2 (L-15) is also recommended for detection of TBL2 in additional species, including equine, canine, bovine and porcine.

Suitable for use as control antibody for TBL2 siRNA (h): sc-89837, TBL2 siRNA (m): sc-106602, TBL2 shRNA Plasmid (h): sc-89837-SH, TBL2 shRNA Plasmid (m): sc-106602-SH, TBL2 shRNA (h) Lentiviral Particles: sc-89837-V and TBL2 shRNA (m) Lentiviral Particles: sc-106602-V.

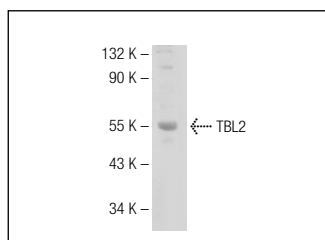
Molecular Weight of TBL2: 50 kDa.

Positive Controls: Ramos cell lysate: sc-2216.

RECOMMENDED SECONDARY REAGENTS

To ensure optimal results, the following support (secondary) reagents are recommended: 1) Western Blotting: use donkey anti-goat IgG-HRP: sc-2020 (dilution range: 1:2000-1:100,000) or Cruz Marker™ compatible donkey anti-goat IgG-HRP: sc-2033 (dilution range: 1:2000-1:5000), Cruz Marker™ Molecular Weight Standards: sc-2035, TBS Blotto A Blocking Reagent: sc-2333 and Western Blotting Luminol Reagent: sc-2048. 2) Immunoprecipitation: use Protein A/G PLUS-Agarose: sc-2003 (0.5 ml agarose/2.0 ml). 3) Immunofluorescence: use donkey anti-goat IgG-FITC: sc-2024 (dilution range: 1:100-1:400) or donkey anti-goat IgG-TR: sc-2783 (dilution range: 1:100-1:400) with UltraCruz™ Mounting Medium: sc-24941.

DATA



TBL2 (L-15): sc-104692. Western blot analysis of TBL2 expression in Ramos whole cell lysate.

RESEARCH USE

For research use only, not for use in diagnostic procedures.