

# COX15 (E-13): sc-104855

## BACKGROUND

The cytochrome c oxidase (COX) family of proteins function as the final electron donor in the respiratory chain to drive a proton gradient across the inner mitochondrial membrane, ultimately resulting in the production of water. The mammalian COX apoenzyme is a dimer, with each monomer consisting of 13 subunits, some of which are mitochondrial and some of which are nuclear. COX15 (cytochrome c oxidase assembly protein COX15 homolog) is a 410 amino acid multi-pass mitochondrial membrane protein belonging to the COX15/ctaA family. Existing as two alternatively spliced isoforms, COX15 is predominantly expressed in tissues containing high rates of oxidative phosphorylation including brain, heart and muscle. COX15 defects are the cause of a neurodegenerative disorder known as Leigh syndrome and cytochrome c oxidase deficiency (COX deficiency).

## REFERENCES

1. Kennaway, N.G., Carrero-Valenzuela, R.D., Ewart, G., Balan, V.K., Lightowlers, R., Zhang, Y.Z., Powell, B.R., Capaldi, R.A. and Buist, N.R. 1990. Isoforms of mammalian cytochrome c oxidase: correlation with human cytochrome c oxidase deficiency. *Pediatr. Res.* 28: 529-535.
2. Petruzzella, V., Tiranti, V., Fernandez, P., Ianna, P., Carozzo, R. and Zeviani, M. 1998. Identification and characterization of human cDNAs specific to BCS1, PET112, SCO1, COX15, and COX11, five genes involved in the formation and function of the mitochondrial respiratory chain. *Genomics* 54: 494-504.
3. Barros, M.H., Carlson, C.G., Glerum, D.M. and Tzagoloff, A. 2001. Involvement of mitochondrial ferredoxin and COX15p in hydroxylation of Heme O. *FEBS Lett.* 492: 133-138.
4. Antonicka, H., Mattman, A., Carlson, C.G., Glerum, D.M., Hoffbuhr, K.C., Leary, S.C., Kennaway, N.G. and Shoubridge, E.A. 2003. Mutations in COX15 produce a defect in the mitochondrial heme biosynthetic pathway, causing early-onset fatal hypertrophic cardiomyopathy. *Am. J. Hum. Genet.* 72: 101-114.
5. Oquendo, C.E., Antonicka, H., Shoubridge, E.A., Reardon, W. and Brown, G.K. 2004. Functional and genetic studies demonstrate that mutation in the COX15 gene can cause Leigh syndrome. *J. Med. Genet.* 41: 540-544.
6. Vitali, M., Venturelli, E., Galimberti, D., Benerini Gatta, L., Scarpini, E. and Finazzi, D. 2009. Analysis of the genes coding for subunit 10 and 15 of cytochrome c oxidase in Alzheimer's disease. *J. Neural. Transm.* 116: 1635-1641.
7. Online Mendelian Inheritance in Man, OMIM™. 2009. Johns Hopkins University, Baltimore, MD. MIM Number: 603646. World Wide Web URL: <http://www.ncbi.nlm.nih.gov/omim/>

## CHROMOSOMAL LOCATION

Genetic locus: COX15 (human) mapping to 10q24.2; Cox15 (mouse) mapping to 19 C3.

## SOURCE

COX15 (E-13) is an affinity purified goat polyclonal antibody raised against a peptide mapping within an internal region of COX15 of human origin.

## PRODUCT

Each vial contains 200 µg IgG in 1.0 ml of PBS with < 0.1% sodium azide and 0.1% gelatin.

Blocking peptide available for competition studies, sc-104855 P, (100 µg peptide in 0.5 ml PBS containing < 0.1% sodium azide and 0.2% BSA).

## APPLICATIONS

COX15 (E-13) is recommended for detection of COX15 of mouse, rat and human origin by Western Blotting (starting dilution 1:200, dilution range 1:100-1:1000), immunoprecipitation [1-2 µg per 100-500 µg of total protein (1 ml of cell lysate)], immunofluorescence (starting dilution 1:50, dilution range 1:50-1:500) and solid phase ELISA (starting dilution 1:30, dilution range 1:30-1:3000); non cross-reactive with other COX family members.

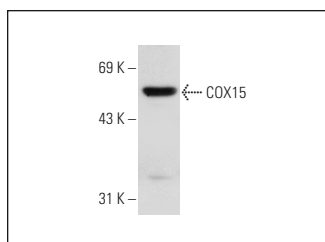
COX15 (E-13) is also recommended for detection of COX15 in additional species, including equine, canine, bovine, porcine and avian.

Suitable for use as control antibody for COX15 siRNA (h): sc-90524, COX15 siRNA (m): sc-142524, COX15 shRNA Plasmid (h): sc-90524-SH, COX15 shRNA Plasmid (m): sc-142524-SH, COX15 shRNA (h) Lentiviral Particles: sc-90524-V and COX15 shRNA (m) Lentiviral Particles: sc-142524-V.

Molecular Weight of COX15: 46 kDa.

Positive Controls: Hep G2 cell lysate: sc-2227.

## DATA



COX15 (E-13): sc-104855. Western blot analysis of COX15 expression in Hep G2 whole cell lysate.

## STORAGE

Store at 4° C, **\*\*DO NOT FREEZE\*\***. Stable for one year from the date of shipment. Non-hazardous. No MSDS required.

## RESEARCH USE

For research use only, not for use in diagnostic procedures.

**MONOS**  
Satisfaction  
Guaranteed

Try **COX15 (G-10): sc-390987**, our highly recommended monoclonal alternative to COX15 (E-13).