

# MKX (S-14): sc-104996

## BACKGROUND

MKX (homeobox protein mohawk) is a 352 amino acid nuclear protein that may act as a morphogenetic regulator of cell adhesion. Belonging to the TALE/ IRO homeobox family, MKX contains one homeobox DNA-binding domain. The gene encoding MKX maps to human chromosome 10, which houses over 1,200 genes and comprises nearly 4.5% of the human genome. Defects in some of the genes that map to chromosome 10 are associated with Charcot-Marie Tooth disease, Jackson-Weiss syndrome, Usher syndrome, nonsyndromic deafness, Wolman's syndrome, Cowden syndrome, multiple endocrine neoplasia type 2 and porphyria.

## REFERENCES

1. Alimova-Kost, M.V., Imreh, S., Buchman, V.L. and Ninkina, N.N. 1998. Assignment of phosphotriesterase-related gene (PTER) to human chromosome band 10p12 by *in situ* hybridization. *Cytogenet. Cell Genet.* 83: 16-17.
2. Berger, P., Young, P. and Suter, U. 2002. Molecular cell biology of Charcot-Marie-Tooth disease. *Neurogenetics* 4: 1-15.
3. Nonneman, D. and Rohrer, G.A. 2004. Comparative mapping of human chromosome 10 to pig chromosomes 10 and 14. *Anim. Genet.* 35: 338-343.
4. Deloukas, P., Earthrowl, M.E., Grafham, D.V., Rubenfield, M., French, L., Steward, C.A., Sims, S.K., Jones, M.C., Searle, S., Scott, C., Howe, K., Hunt, S.E., Andrews, T.D., Gilbert, J.G., Swarbreck, D., Ashurst, J.L., Taylor, A., Battles, J., Bird, C.P., Ainscough, R., Almeida, J.P., Ashwell, R.I., et al. 2004. The DNA sequence and comparative analysis of human chromosome 10. *Nature* 429: 375-381.
5. Chen, L. and Deng, C.X. 2005. Roles of FGF signaling in skeletal development and human genetic diseases. *Front. Biosci.* 10: 1961-1976.
6. Mukherjee, K. and Bürglin, T.R. 2007. Comprehensive analysis of animal TALE homeobox genes: new conserved motifs and cases of accelerated evolution. *J. Mol. Evol.* 65: 137-153.

## CHROMOSOMAL LOCATION

Genetic locus: MKX (human) mapping to 10p12.1; Mlx (mouse) mapping to 18 A1.

## SOURCE

MKX (S-14) is an affinity purified goat polyclonal antibody raised against a peptide mapping within an internal region of MKX of human origin.

## PRODUCT

Each vial contains 200 µg IgG in 1.0 ml of PBS with < 0.1% sodium azide and 0.1% gelatin.

Blocking peptide available for competition studies, sc-104996 P, (100 µg peptide in 0.5 ml PBS containing < 0.1% sodium azide and 0.2% BSA).

Available as TransCruz reagent for Gel Supershift and ChIP applications, sc-104996 X, 200 µg/0.1 ml.

## APPLICATIONS

MKX (S-14) is recommended for detection of MKX of mouse, rat and human origin by Western Blotting (starting dilution 1:200, dilution range 1:100-1:1000), immunofluorescence (starting dilution 1:50, dilution range 1:50-1:500), immunohistochemistry (including paraffin-embedded sections) (starting dilution 1:50, dilution range 1:50-1:500) and solid phase ELISA (starting dilution 1:30, dilution range 1:30-1:3000).

MKX (S-14) is also recommended for detection of MKX in additional species, including equine, canine and bovine.

Suitable for use as control antibody for MKX siRNA (h): sc-90526, MKX siRNA (m): sc-149461, MKX shRNA Plasmid (h): sc-90526-SH, MKX shRNA Plasmid (m): sc-149461-SH, MKX shRNA (h) Lentiviral Particles: sc-90526-V and MKX shRNA (m) Lentiviral Particles: sc-149461-V.

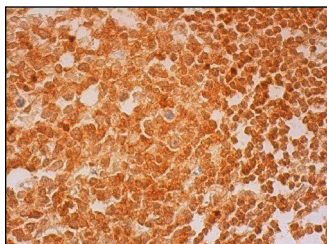
MKX (S-14) X TransCruz antibody is recommended for Gel Supershift and ChIP applications.

Molecular Weight of MKX: 39 kDa.

## RECOMMENDED SECONDARY REAGENTS

To ensure optimal results, the following support (secondary) reagents are recommended: 1) Western Blotting: use donkey anti-goat IgG-HRP: sc-2020 (dilution range: 1:2000-1:100,000) or Cruz Marker™ compatible donkey anti-goat IgG-HRP: sc-2033 (dilution range: 1:2000-1:5000), Cruz Marker™ Molecular Weight Standards: sc-2035, TBS Blotto A Blocking Reagent: sc-2333 and Western Blotting Luminol Reagent: sc-2048. 2) Immunofluorescence: use donkey anti-goat IgG-FITC: sc-2024 (dilution range: 1:100-1:400) or donkey anti-goat IgG-TR: sc-2783 (dilution range: 1:100-1:400) with UltraCruz™ Mounting Medium: sc-24941. 3) Immunohistochemistry: use ImmunoCruz™: sc-2053 or ABC: sc-2023 goat IgG Staining Systems.

## DATA



MKX (S-14): sc-104996. Immunoperoxidase staining of formalin fixed, paraffin-embedded human lymph node tissue showing nuclear and cytoplasmic staining of cells in germinal center and cells in non-germinal center.

## STORAGE

Store at 4° C, \*\*DO NOT FREEZE\*\*. Stable for one year from the date of shipment. Non-hazardous. No MSDS required.

## RESEARCH USE

For research use only, not for use in diagnostic procedures.