

# BXDC2 (C-16): sc-107171

## BACKGROUND

BXDC2 (Brix domain-containing protein 2) is a 306 amino acid protein encoded by the human gene BXDC2. BXDC2 is a nuclear protein that contains one Brix domain. Brix domain containing proteins represent a family of proteins involved in the biogenesis of large ribosomal subunits. The Brix domain is a region that is homologous to the yeast protein Pitx1 (ribosome biogenesis protein BRX1). Pitx1 is part of a complex that includes BXDC5, BXDC1 and PPAN. This complex is required for the biogenesis of the 60S ribosomal subunit. BXDC2 exhibits the same functions as Pitx1.

## REFERENCES

1. Strezoska, Z., Pestov, D.G. and Lau, L.F. 2000. Bop1 is a mouse WD40 repeat nucleolar protein involved in 28S and 5.8S rRNA processing and 60S ribosome biogenesis. *Mol. Cell. Biol.* 20: 5516-5528.
2. Sasaki, T., Toh-E, A. and Kikuchi, Y. 2000. Yeast Krr1p physically and functionally interacts with a novel essential Kri1p, and both proteins are required for 40S ribosome biogenesis in the nucleolus. *Mol. Cell. Biol.* 20: 7971-7979.
3. Kaser, A., Bogengruber, E., Hallegger, M., Doppler, E., Lepperdinger, G., Jantsch, M., Breitenbach, M. and Kreil, G. 2002. Brix from *Xenopus laevis* and brx1p from yeast define a new family of proteins involved in the biogenesis of large ribosomal subunits. *Biol. Chem.* 382: 1637-1647.
4. Morita, D., Miyoshi, K., Matsui, Y., Toh-E, A., Shinkawa, H., Miyakawa, T. and Mizuta, K. 2002. Rpf2p, an evolutionarily conserved protein, interacts with ribosomal protein L11 and is essential for the processing of 27 SB pre-rRNA to 25 S rRNA and the 60 S ribosomal subunit assembly in *Saccharomyces cerevisiae*. *J. Biol. Chem.* 277: 28780-28786.
5. Mungall, A.J., Palmer, S.A., Sims, S.K., Edwards, C.A., Ashurst, J.L., Wilming, L., Jones, M.C., Horton, R., Hunt, S.E., Scott, C.E., Gilbert, J.G.R., Clamp, M.E., Bethel, G., Milne, S., Ainscough, R., Almeida, J.P., Ambrose, K.D., et al. 2003. The DNA sequence and analysis of human chromosome 6. *Nature* 425: 805-811.
6. McQueen, M.B., Devlin, B., Faraone, S.V., Nimgaonkar, V.L., Sklar, P., Smoller, J.W., Abou Jamra, R., Albus, M., et al. 2005. Combined analysis from eleven linkage studies of bipolar disorder provides strong evidence of susceptibility loci on chromosomes 6q and 8q. *Am. J. Hum. Genet.* 77: 582-595.
7. Olsson, K.S., Ritter, B. and Hansson, N. 2007. The HLA-A1-B8 haplotype hitchhiking with the hemochromatosis mutation: does it affect the phenotype? *Eur. J. Haematol.* 79: 429-434.
8. Safadi, S.S. and Shaw, G.S. 2007. A disease state mutation unfolds the parkin ubiquitin-like domain. *Biochemistry* 46: 14162-14169.

## CHROMOSOMAL LOCATION

Genetic locus: BXDC2 (human) mapping to 5p13.2; Bxdc2 (mouse) mapping to 15 A1.

## RESEARCH USE

For research use only, not for use in diagnostic procedures.

## SOURCE

BXDC2 (C-16) is an affinity purified goat polyclonal antibody raised against a peptide mapping near the C-terminus of BXDC2 of human origin.

## PRODUCT

Each vial contains 200 µg IgG in 1.0 ml of PBS with < 0.1% sodium azide and 0.1% gelatin.

Blocking peptide available for competition studies, sc-107171 P, (100 µg peptide in 0.5 ml PBS containing < 0.1% sodium azide and 0.2% BSA).

## APPLICATIONS

BXDC2 (C-16) is recommended for detection of BXDC2 of mouse, rat and human origin by Western Blotting (starting dilution 1:200, dilution range 1:100-1:1000), immunoprecipitation [1-2 µg per 100-500 µg of total protein (1 ml of cell lysate)], immunofluorescence (starting dilution 1:50, dilution range 1:50-1:500) and solid phase ELISA (starting dilution 1:30, dilution range 1:30-1:3000); non cross-reactive with family members BXDC1 or BXDC5.

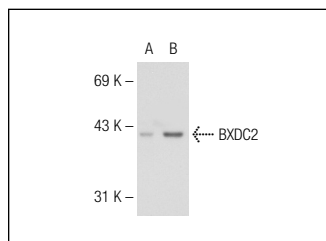
BXDC2 (C-16) is also recommended for detection of BXDC2 in additional species, including equine, canine, bovine, porcine and avian.

Suitable for use as control antibody for BXDC2 siRNA (h): sc-91590, BXDC2 siRNA (m): sc-141793, BXDC2 shRNA Plasmid (h): sc-91590-SH, BXDC2 shRNA Plasmid (m): sc-141793-SH, BXDC2 shRNA (h) Lentiviral Particles: sc-91590-V and BXDC2 shRNA (m) Lentiviral Particles: sc-141793-V.

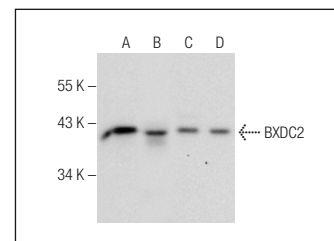
Molecular Weight of BXDC2: 41 kDa.

Positive Controls: HeLa nuclear extract: sc-2120, NIH/3T3 nuclear extract: sc-2138 or BXDC2 (h3): 293T Lysate: sc-172530.

## DATA



BXDC2 (C-16): sc-107171. Western blot analysis of BXDC2 expression in non-transfected: sc-117752 (A) and human BXDC2 transfected: sc-172530 (B) 293T whole cell lysates.



BXDC2 (C-16): sc-107171. Western blot analysis of BXDC2 expression in HeLa (A), NIH/3T3 (B), K-562 (C) and Hep G2 (D) nuclear extracts.

## STORAGE

Store at 4° C, **\*\*DO NOT FREEZE\*\***. Stable for one year from the date of shipment. Non-hazardous. No MSDS required.

## PROTOCOLS

See our web site at [www.scbt.com](http://www.scbt.com) or our catalog for detailed protocols and support products.