

Caprin2 (P-12): sc-107474

BACKGROUND

Caprin2 (cytoplasmic activation/proliferation-associated protein 2), also known as EEG1, EEG-1, C1QDC1 (C1q domain-containing protein 1) or gastric cancer multidrug resistance-associated protein, is a 1,127 amino acid highly conserved protein that is ubiquitously expressed, with highest levels of expression in brain and spleen. Caprin2 stabilizes cytosolic β -catenin and enhances LEF-1 dependent reporter gene activity as well as the expression of Wnt target genes in mammalian cells. Caprin2 promotes LRP5/6 phosphorylation by GSK-3 and enhances the interaction between Axin and LRP5/6. It is suggested that Caprin2 functions as a proapoptotic inhibitor of the cell cycle. Nine isoforms of Caprin2 exist due to alternative splicing events.

REFERENCES

1. Aerbajinai, W., Lee, Y.T., Wojda, U., Barr, V.A. and Miller, J.L. 2004. Cloning and characterization of a gene expressed during terminal differentiation that encodes a novel inhibitor of growth. *J. Biol. Chem.* 279: 1916-1921.
2. Grill, B., Wilson, G.M., Zhang, K.X., Wang, B., Doyonnas, R., Quadroni, M. and Schrader, J.W. 2004. Activation/division of lymphocytes results in increased levels of cytoplasmic activation/proliferation-associated protein-1: prototype of a new family of proteins. *J. Immunol.* 172: 2389-2400.
3. Wang, B., David, M.D. and Schrader, J.W. 2005. Absence of Caprin1 results in defects in cellular proliferation. *J. Immunol.* 175: 4274-4282.
4. Online Mendelian Inheritance in Man, OMIM™. 2006. Johns Hopkins University, Baltimore, MD. MIM Number: 610375. World Wide Web URL: <http://www.ncbi.nlm.nih.gov/omim/>
5. Ding, Y., Xi, Y., Chen, T., Wang, J.Y., Tao, D.L., Wu, Z.L., Li, Y.P., Li, C., Zeng, R. and Li, L. 2008. Caprin2 enhances canonical Wnt signaling through regulating LRP5/6 phosphorylation. *J. Cell Biol.* 182: 865-872.

CHROMOSOMAL LOCATION

Genetic locus: CAPRIN2 (human) mapping to 12p11.21; Caprin2 (mouse) mapping to 6 G3.

SOURCE

Caprin2 (P-12) is an affinity purified goat polyclonal antibody raised against a peptide mapping within an internal region of Caprin2 of human origin.

PRODUCT

Each vial contains 200 μ g IgG in 1.0 ml of PBS with < 0.1% sodium azide and 0.1% gelatin.

Blocking peptide available for competition studies, sc-107474 P, (100 μ g peptide in 0.5 ml PBS containing < 0.1% sodium azide and 0.2% BSA).

STORAGE

Store at 4° C, **DO NOT FREEZE**. Stable for one year from the date of shipment. Non-hazardous. No MSDS required.

RESEARCH USE

For research use only, not for use in diagnostic procedures.

APPLICATIONS

Caprin2 (P-12) is recommended for detection of Caprin2 of mouse, rat and human origin by Western Blotting (starting dilution 1:200, dilution range 1:100-1:1000), immunoprecipitation [1-2 μ g per 100-500 μ g of total protein (1 ml of cell lysate)], immunofluorescence (starting dilution 1:50, dilution range 1:50-1:500) and solid phase ELISA (starting dilution 1:30, dilution range 1:30-1:3000); non cross-reactive with family member Caprin1.

Caprin2 (P-12) is also recommended for detection of Caprin2 in additional species, including equine, canine and porcine.

Suitable for use as control antibody for Caprin2 siRNA (h): sc-95931, Caprin2 siRNA (m): sc-142004, Caprin2 shRNA Plasmid (h): sc-95931-SH, Caprin2 shRNA Plasmid (m): sc-142004-SH, Caprin2 shRNA (h) Lentiviral Particles: sc-95931-V and Caprin2 shRNA (m) Lentiviral Particles: sc-142004-V.

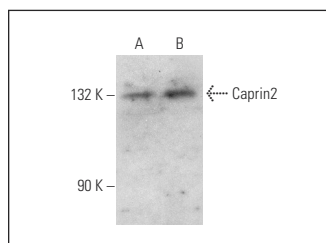
Molecular Weight of Caprin2: 126 kDa.

Positive Controls: MIA PaCa-2 cell lysate: sc-2285 or HEL 92.1.7 cell lysate: sc-2270.

RECOMMENDED SECONDARY REAGENTS

To ensure optimal results, the following support (secondary) reagents are recommended: 1) Western Blotting: use donkey anti-goat IgG-HRP: sc-2020 (dilution range: 1:2000-1:100,000) or Cruz Marker™ compatible donkey anti-goat IgG-HRP: sc-2033 (dilution range: 1:2000-1:5000), Cruz Marker™ Molecular Weight Standards: sc-2035, TBS Blotto A Blocking Reagent: sc-2333 and Western Blotting Luminol Reagent: sc-2048. 2) Immunoprecipitation: use Protein A/G PLUS-Agarose: sc-2003 (0.5 ml agarose/2.0 ml). 3) Immunofluorescence: use donkey anti-goat IgG-FITC: sc-2024 (dilution range: 1:100-1:400) or donkey anti-goat IgG-TR: sc-2783 (dilution range: 1:100-1:400) with UltraCruz™ Mounting Medium: sc-24941.

DATA



Caprin2 (P-12): sc-107474. Western blot analysis of Caprin2 expression in MIA PaCa-2 (A) and HEL 92.1.7 (B) whole cell lysates.

PROTOCOLS

See our web site at www.scbt.com or our catalog for detailed protocols and support products.