

Exportin 6 (N-13): sc-107538

BACKGROUND

Exportins, which recruit cargo to the nucleoplasm, preferentially bind their substrates at high RanGTP concentrations in the nucleus and exit the nucleus as trimeric cargo-exportin-RanGTP complexes. These complexes are then disassembled via the hydrolysis of GTP. Exportin 6, also known as RANBP20 or XPO6, is a 1,125 amino acid protein that localizes to both the nucleus and the cytoplasm and contains one importin N-terminal domain. Existing in a complex with Profilin-1 and β -actin, Exportin 6 functions to mediate the nuclear export of actin-associated protein structures in somatic cells. The gene encoding Exportin 6 maps to human chromosome 16, which houses over 900 genes and comprises nearly 3% of the human genome.

REFERENCES

- McLaughlin, P.J. and Weeds, A.G. 1995. Actin-binding protein complexes at atomic resolution. *Annu. Rev. Biophys. Biomol. Struct.* 24: 643-675.
- Nagase, T., Ishikawa, K., Nakajima, D., Ohira, M., Seki, N., Miyajima, N., Tanaka, A., Kotani, H., Nomura, N. and Ohara, O. 1997. Prediction of the coding sequences of unidentified human genes. VII. The complete sequences of 100 new cDNA clones from brain which can code for large proteins *in vitro*. *DNA Res.* 4: 141-150.
- Gibbon, B.C., Zonia, L.E., Kovar, D.R., Hussey, P.J. and Staiger, C.J. 1998. Pollen profilin function depends on interaction with proline-rich motifs. *Plant Cell* 10: 981-993.
- Riou, P., Saffroy, R., Comoy, J., Gross-Goupil, M., Thiéry, J.P., Emile, J.F., Azoulay, D., Piatier-Tonneau, D., Lemoine, A. and Debuire, B. 2002. Investigation in liver tissues and cell lines of the transcription of 13 genes mapping to the 16q24 region that are frequently deleted in hepatocellular carcinoma. *Clin. Cancer Res.* 8: 3178-3186.
- Stüven, T., Hartmann, E. and Görlich, D. 2003. Exportin 6: a novel nuclear export receptor that is specific for profilin.actin complexes. *EMBO J.* 22: 5928-5940.
- Online Mendelian Inheritance in Man, OMIM[™]. 2004. Johns Hopkins University, Baltimore, MD. MIM Number: 608411. World Wide Web URL: <http://www.ncbi.nlm.nih.gov/omim/>

CHROMOSOMAL LOCATION

Genetic locus: XPO6 (human) mapping to 16p11.2; Xpo6 (mouse) mapping to 7 F3.

SOURCE

Exportin 6 (N-13) is an affinity purified goat polyclonal antibody raised against a peptide mapping near the N-terminus of Exportin 6 of human origin.

PRODUCT

Each vial contains 100 μ g IgG in 1.0 ml of PBS with < 0.1% sodium azide and 0.1% gelatin.

Blocking peptide available for competition studies, sc-107538 P, (100 μ g peptide in 0.5 ml PBS containing < 0.1% sodium azide and 0.2% BSA).

APPLICATIONS

Exportin 6 (N-13) is recommended for detection of Exportin 6 of mouse, rat and human origin by Western Blotting (starting dilution 1:200, dilution range 1:100-1:1000), immunoprecipitation [1-2 μ g per 100-500 μ g of total protein (1 ml of cell lysate)], immunofluorescence (starting dilution 1:50, dilution range 1:50-1:500) and solid phase ELISA (starting dilution 1:30, dilution range 1:30-1:3000).

Exportin 6 (N-13) is also recommended for detection of Exportin 6 in additional species, including equine, canine, bovine, porcine and avian.

Suitable for use as control antibody for Exportin 6 siRNA (h): sc-93535, Exportin 6 siRNA (m): sc-144982, Exportin 6 shRNA Plasmid (h): sc-93535-SH, Exportin 6 shRNA Plasmid (m): sc-144982-SH, Exportin 6 shRNA (h) Lentiviral Particles: sc-93535-V and Exportin 6 shRNA (m) Lentiviral Particles: sc-144982-V.

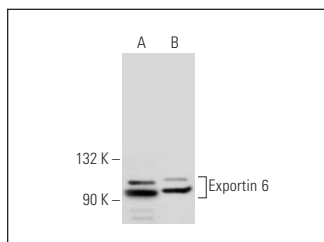
Molecular Weight of Exportin 6: 129 kDa.

Positive Controls: Ramos cell lysate: sc-2216 or K-562 whole cell lysate: sc-2203.

RECOMMENDED SECONDARY REAGENTS

To ensure optimal results, the following support (secondary) reagents are recommended: 1) Western Blotting: use donkey anti-goat IgG-HRP: sc-2020 (dilution range: 1:2000-1:100,000) or Cruz Marker[™] compatible donkey anti-goat IgG-HRP: sc-2033 (dilution range: 1:2000-1:5000), Cruz Marker[™] Molecular Weight Standards: sc-2035, TBS Blotto A Blocking Reagent: sc-2333 and Western Blotting Luminol Reagent: sc-2048. 2) Immunoprecipitation: use Protein A/G PLUS-Agarose: sc-2003 (0.5 ml agarose/2.0 ml). 3) Immunofluorescence: use donkey anti-goat IgG-FITC: sc-2024 (dilution range: 1:100-1:400) or donkey anti-goat IgG-TR: sc-2783 (dilution range: 1:100-1:400) with UltraCruz[™] Mounting Medium: sc-24941.

DATA



Exportin 6 (N-13): sc-107538. Western blot analysis of Exportin 6 expression in Ramos (A) and K-562 (B) whole cell lysates.

STORAGE

Store at 4° C, **DO NOT FREEZE**. Stable for one year from the date of shipment. Non-hazardous. No MSDS required.

RESEARCH USE

For research use only, not for use in diagnostic procedures.