

# GPR97 (N-14): sc-107586

## BACKGROUND

G protein-coupled receptors (GPRs), also known as seven transmembrane receptors, heptahelical receptors or 7TM receptors, comprise a superfamily of proteins that play a role in many different stimulus-response pathways. G protein-coupled receptors translate extracellular signals into intracellular signals (G protein activation) and they respond to a variety of signaling molecules, such as hormones and neurotransmitters. GPR97 (G protein-coupled receptor 97), also known as PB99 or PGR26, is a 549 amino acid multi-pass membrane protein that contains one GPS domain and belongs to the G protein-coupled receptor 2 family. GPR97 functions as an orphan receptor that is thought to play a role in signaling events throughout the cell.

## REFERENCES

1. Larhammar, D., Blomqvist, A.G. and Wahlestedt, C. 1993. The receptor revolution—multiplicity of G protein-coupled receptors. *Drug Des. Discov.* 9: 179-188.
2. Ji, T.H., Grossmann, M. and Ji, I. 1998. G protein-coupled receptors. I. Diversity of receptor-ligand interactions. *J. Biol. Chem.* 273: 17299-17302.
3. Schöneberg, T., Schultz, G. and Gudermann, T. 1999. Structural basis of G protein-coupled receptor function. *Mol. Cell. Endocrinol.* 151: 181-193.
4. Fredriksson, R., Lagerström, M.C., Höglund, P.J. and Schiöth, H.B. 2002. Novel human G protein-coupled receptors with long N-terminals containing GPS domains and Ser/Thr-rich regions. *FEBS Lett.* 531: 407-414.
5. Vanti, W.B., Nguyen, T., Cheng, R., Lynch, K.R., George, S.R. and O'Dowd, B.F. 2003. Novel human G protein-coupled receptors. *Biochem. Biophys. Res. Commun.* 305: 67-71.
6. Vassilatis, D.K., Hohmann, J.G., Zeng, H., Li, F., Ranchalis, J.E., Mortrud, M.T., Brown, A., Rodriguez, S.S., Weller, J.R., Wright, A.C., Bergmann, J.E. and Gaitanaris, G.A. 2003. The G protein-coupled receptor repertoires of human and mouse. *Proc. Natl. Acad. Sci. USA* 100: 4903-4908.
7. Bjarnadóttir, T.K., Fredriksson, R., Höglund, P.J., Gloriam, D.E., Lagerström, M.C. and Schiöth, H.B. 2004. The human and mouse repertoire of the adhesion family of G protein-coupled receptors. *Genomics* 84: 23-33.
8. Bjarnadóttir, T.K., Geirardsdóttir, K., Ingemansson, M., Mirza, M.A., Fredriksson, R. and Schiöth, H.B. 2007. Identification of novel splice variants of Adhesion G protein-coupled receptors. *Gene* 387: 38-48.

## CHROMOSOMAL LOCATION

Genetic locus: GPR97 (human) mapping to 16q13.

## SOURCE

GPR97 (N-14) is an affinity purified goat polyclonal antibody raised against a peptide mapping within an N-terminal extracellular domain of GPR97 of human origin.

## STORAGE

Store at 4° C, **\*\*DO NOT FREEZE\*\***. Stable for one year from the date of shipment. Non-hazardous. No MSDS required.

## PRODUCT

Each vial contains 200 µg IgG in 1.0 ml of PBS with < 0.1% sodium azide and 0.1% gelatin.

Blocking peptide available for competition studies, sc-107586 P, (100 µg peptide in 0.5 ml PBS containing < 0.1% sodium azide and 0.2% BSA).

## APPLICATIONS

GPR97 (N-14) is recommended for detection of GPR97 of human origin by Western Blotting (starting dilution 1:200, dilution range 1:100-1:1000), immunoprecipitation [1-2 µg per 100-500 µg of total protein (1 ml of cell lysate)], immunofluorescence (starting dilution 1:50, dilution range 1:50-1:500) and solid phase ELISA (starting dilution 1:30, dilution range 1:30-1:3000).

Suitable for use as control antibody for GPR97 siRNA (h): sc-93484, GPR97 shRNA Plasmid (h): sc-93484-SH and GPR97 shRNA (h) Lentiviral Particles: sc-93484-V.

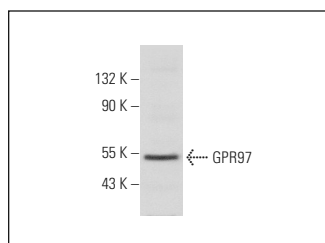
Molecular Weight of GPR97: 61 kDa.

Positive Controls: WI-38 whole cell lysate: sc-364260.

## RECOMMENDED SECONDARY REAGENTS

To ensure optimal results, the following support (secondary) reagents are recommended: 1) Western Blotting: use donkey anti-goat IgG-HRP: sc-2020 (dilution range: 1:2000-1:100,000) or Cruz Marker™ compatible donkey anti-goat IgG-HRP: sc-2033 (dilution range: 1:2000-1:5000), Cruz Marker™ Molecular Weight Standards: sc-2035, TBS Blotto A Blocking Reagent: sc-2333 and Western Blotting Luminol Reagent: sc-2048. 2) Immunoprecipitation: use Protein A/G PLUS-Agarose: sc-2003 (0.5 ml agarose/2.0 ml). 3) Immunofluorescence: use donkey anti-goat IgG-FITC: sc-2024 (dilution range: 1:100-1:400) or donkey anti-goat IgG-TR: sc-2783 (dilution range: 1:100-1:400) with UltraCruz™ Mounting Medium: sc-24941.

## DATA



GPR97 (N-14): sc-107586. Western blot analysis of GPR97 expression in WI-38 whole cell lysate.

## RESEARCH USE

For research use only, not for use in diagnostic procedures.

## PROTOCOLS

See our web site at [www.scbt.com](http://www.scbt.com) or our catalog for detailed protocols and support products.