

MRP-L45 (T-15): sc-107791

BACKGROUND

Mitochondrial ribosomes consist of a large 39S subunit and a small 28S subunit, both of which are comprised of multiple mitochondrial ribosomal proteins (MRPs) that are encoded by nuclear genes and are essential for protein synthesis within mitochondria. MRP-L45 (mitochondrial ribosomal protein L45) is a 306 amino acid protein that localizes to the mitochondrion, where it exists as a component of the 39S ribosomal subunit and works in conjunction with MRPs to mediate protein synthesis. The gene encoding MRP-L45 maps to human chromosome 17, which comprises over 2.5% of the human genome and encodes over 1,200 genes. Two key tumor suppressor genes are associated with chromosome 17, namely, p53 and BRCA1. Tumor suppressor p53 is necessary for maintenance of cellular genetic integrity by moderating cell fate through DNA repair versus cell death. Malfunction or loss of p53 expression is associated with malignant cell growth and Li-Fraumeni syndrome. Like p53, BRCA1 is directly involved in DNA repair, though specifically it is recognized as a genetic determinant of early onset breast cancer and predisposition to cancers of the ovary, colon, prostate gland and fallopian tubes.

REFERENCES

1. Kenmochi, N., Suzuki, T., Uechi, T., Magoori, M., Kuniba, M., Higa, S., Watanabe, K. and Tanaka, T. 2001. The human mitochondrial ribosomal protein genes: mapping of 54 genes to the chromosomes and implications for human disorders. *Genomics* 77: 65-70.
2. Koc, E.C., Burkhart, W., Blackburn, K., Moyer, M.B., Schlatzer, D.M., Moseley, A. and Spemulli, L.L. 2001. The large subunit of the mammalian mitochondrial ribosome. Analysis of the complement of ribosomal proteins present. *J. Biol. Chem.* 276: 43958-43969.
3. Zhang, Z. and Gerstein, M. 2003. Identification and characterization of over 100 mitochondrial ribosomal protein pseudogenes in the human genome. *Genomics* 81: 468-480.
4. O'Brien, T.W. 2003. Properties of human mitochondrial ribosomes. *IUBMB Life* 55: 505-513.
5. Sylvester, J.E., Fischel-Ghodsian, N., Mougey, E.B. and O'Brien, T.W. 2004. Mitochondrial ribosomal proteins: candidate genes for mitochondrial disease. *Genet. Med.* 6: 73-80.
6. Online Mendelian Inheritance in Man, OMIM[™]. 2008. Johns Hopkins University, Baltimore, MD. MIM Number: 611850. World Wide Web URL: <http://www.ncbi.nlm.nih.gov/omim/>

CHROMOSOMAL LOCATION

Genetic locus: MRPL45 (human) mapping to 17q12; Mrpl45 (mouse) mapping to 11 D.

SOURCE

MRP-L45 (T-15) is an affinity purified goat polyclonal antibody raised against a peptide mapping within an internal region of MRP-L45 of human origin.

STORAGE

Store at 4° C, ****DO NOT FREEZE****. Stable for one year from the date of shipment. Non-hazardous. No MSDS required.

PRODUCT

Each vial contains 200 µg IgG in 1.0 ml of PBS with < 0.1% sodium azide and 0.1% gelatin.

Blocking peptide available for competition studies, sc-107791 P, (100 µg peptide in 0.5 ml PBS containing < 0.1% sodium azide and 0.2% BSA).

APPLICATIONS

MRP-L45 (T-15) is recommended for detection of MRP-L45 of mouse, rat and human origin by Western Blotting (starting dilution 1:200, dilution range 1:100-1:1000), immunoprecipitation [1-2 µg per 100-500 µg of total protein (1 ml of cell lysate)], immunofluorescence (starting dilution 1:50, dilution range 1:50-1:500) and solid phase ELISA (starting dilution 1:30, dilution range 1:30-1:3000).

MRP-L45 (T-15) is also recommended for detection of MRP-L45 in additional species, including canine and bovine.

Suitable for use as control antibody for MRP-L45 siRNA (h): sc-93965, MRP-L45 siRNA (m): sc-149606, MRP-L45 shRNA Plasmid (h): sc-93965-SH, MRP-L45 shRNA Plasmid (m): sc-149606-SH, MRP-L45 shRNA (h) Lentiviral Particles: sc-93965-V and MRP-L45 shRNA (m) Lentiviral Particles: sc-149606-V.

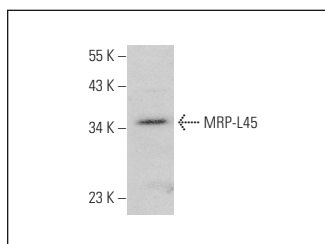
Molecular Weight of MRP-L45: 35 kDa.

Positive Controls: KNRK whole cell lysate: sc-2214.

RECOMMENDED SECONDARY REAGENTS

To ensure optimal results, the following support (secondary) reagents are recommended: 1) Western Blotting: use donkey anti-goat IgG-HRP: sc-2020 (dilution range: 1:2000-1:100,000) or Cruz Marker[™] compatible donkey anti-goat IgG-HRP: sc-2033 (dilution range: 1:2000-1:5000), Cruz Marker[™] Molecular Weight Standards: sc-2035, TBS Blotto A Blocking Reagent: sc-2333 and Western Blotting Luminol Reagent: sc-2048. 2) Immunoprecipitation: use Protein A/G PLUS-Agarose: sc-2003 (0.5 ml agarose/2.0 ml). 3) Immunofluorescence: use donkey anti-goat IgG-FITC: sc-2024 (dilution range: 1:100-1:400) or donkey anti-goat IgG-TR: sc-2783 (dilution range: 1:100-1:400) with UltraCruz[™] Mounting Medium: sc-24941.

DATA



MRP-L45 (T-15): sc-107791. Western blot analysis of MRP-L45 expression in KNRK whole cell lysate.

RESEARCH USE

For research use only, not for use in diagnostic procedures.