

PPIL1 (E-12): sc-107961

BACKGROUND

PPIL1 (peptidylprolyl isomerase (cyclophilin)-like 1), also known as CYPL1, PPlase, CGI-124 or hCyPX, is a member of the cyclophilin-type PPlase family of proteins. PPIL1 contains one PPlase cyclophilin-type domain and is ubiquitously expressed with predominant expression in skeletal muscle and heart. PPIL1 is a component of the 35 S U5 snRNP (small nuclear ribonucleoprotein) and is also recruited to the 45 S activated spliceosome by SKIP (SNW1), a transcriptional coactivator. PPIL1 stably associates with SKIP and may play a role in spliceosome activation, possibly functioning as a foldase or a molecular chaperone. In addition, PPIL1 interacts with Op18, a protein involved in microtubule stabilization, and may participate in cell proliferation. PPIL1 expression levels are elevated in cancer cells, further supporting a role for PPIL1 in proliferation and tumorigenesis.

CHROMOSOMAL LOCATION

Genetic locus: PPIL1 (human) mapping to 6p21.2; Ppil1 (mouse) mapping to 17 A3.3.

SOURCE

PPIL1 (E-12) is an affinity purified goat polyclonal antibody raised against a peptide mapping within an internal region of PPIL1 of human origin.

PRODUCT

Each vial contains 200 µg IgG in 1.0 ml of PBS with < 0.1% sodium azide and 0.1% gelatin.

Blocking peptide available for competition studies, sc-107961 P, (100 µg peptide in 0.5 ml PBS containing < 0.1% sodium azide and 0.2% BSA).

STORAGE

Store at 4° C, ****DO NOT FREEZE****. Stable for one year from the date of shipment. Non-hazardous. No MSDS required.

APPLICATIONS

PPIL1 (E-12) is recommended for detection of PPIL1 of mouse, rat and human origin by Western Blotting (starting dilution 1:200, dilution range 1:100-1:1000), immunoprecipitation [1-2 µg per 100-500 µg of total protein (1 ml of cell lysate)], immunofluorescence (starting dilution 1:50, dilution range 1:50-1:500) and solid phase ELISA (starting dilution 1:30, dilution range 1:30-1:3000); non cross-reactive with family members PPIL4, PPIL5 or PPIL6.

PPIL1 (E-12) is also recommended for detection of PPIL1 in additional species, including equine, canine, bovine and porcine.

Suitable for use as control antibody for PPIL1 siRNA (h): sc-95262, PPIL1 siRNA (m): sc-152409, PPIL1 shRNA Plasmid (h): sc-95262-SH, PPIL1 shRNA Plasmid (m): sc-152409-SH, PPIL1 shRNA (h) Lentiviral Particles: sc-95262-V and PPIL1 shRNA (m) Lentiviral Particles: sc-152409-V.

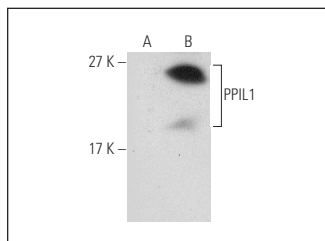
Molecular Weight of PPIL1: 18 kDa.

Positive Controls: HeLa whole cell lysate: sc-2200 or PPIL1 (h): 293T Lysate: sc-171444.

RECOMMENDED SECONDARY REAGENTS

To ensure optimal results, the following support (secondary) reagents are recommended: 1) Western Blotting: use donkey anti-goat IgG-HRP: sc-2020 (dilution range: 1:2000-1:100,000) or Cruz Marker™ compatible donkey anti-goat IgG-HRP: sc-2033 (dilution range: 1:2000-1:5000), Cruz Marker™ Molecular Weight Standards: sc-2035, TBS Blotto A Blocking Reagent: sc-2333 and Western Blotting Luminol Reagent: sc-2048. 2) Immunoprecipitation: use Protein A/G PLUS-Agarose: sc-2003 (0.5 ml agarose/2.0 ml). 3) Immunofluorescence: use donkey anti-goat IgG-FITC: sc-2024 (dilution range: 1:100-1:400) or donkey anti-goat IgG-TR: sc-2783 (dilution range: 1:100-1:400) with UltraCruz™ Mounting Medium: sc-24941.

DATA



PPIL1 (E-12): sc-107961. Western blot analysis of PPIL1 expression in non-transfected: sc-117752 (A) and human PPIL1 transfected: sc-171444 (B) 293T whole cell lysates.

RESEARCH USE

For research use only, not for use in diagnostic procedures.

PROTOCOLS

See our web site at www.scbt.com or our catalog for detailed protocols and support products.



Try **PPIL1 (LB-72): sc-100701**, our highly recommended monoclonal alternative to PPIL1 (E-12).