

SPATA20 (S-14): sc-109042

BACKGROUND

SPATA20 (spermatogenesis associated 20), also known as SP411 or Tisp78, is a 786 amino acid protein that may be involved in fertility regulation. SPATA20 is expressed in testes in an age dependent manner and localizes to round and elongated spermatids. SPATA20 contains a conserved thioredoxin-like domain near the N-terminus region and exists as four isoforms produced by alternative splicing events. SPATA20 is encoded by a gene located on human chromosome 17, which comprises over 2.5% of the human genome and encodes over 1,200 genes. Two key tumor suppressor genes are associated with chromosome 17, namely, p53 and BRCA1. Tumor suppressor p53 is necessary for maintenance of cellular genetic integrity by moderating cell fate through DNA repair versus cell death. Malfunction or loss of p53 expression is associated with malignant cell growth and Li-Fraumeni syndrome. Like p53, BRCA1 is directly involved in DNA repair, though specifically it is recognized as a genetic determinant of early onset breast cancer and predisposition to cancers of the ovary, colon, prostate gland and fallopian tubes.

REFERENCES

- Darby, N.J. and Creighton, T.E. 1995. Functional properties of the individual thioredoxin-like domains of protein disulfide isomerase. *Biochemistry* 34: 11725-11735.
- Darby, N.J. and Creighton, T.E. 1995. Characterization of the active site cysteine residues of the thioredoxin-like domains of protein disulfide isomerase. *Biochemistry* 34: 16770-16780.
- Laboissiere, M.C., Sturley, S.L. and Raines, R.T. 1995. The essential function of protein-disulfide isomerase is to unscramble non-native disulfide bonds. *J. Biol. Chem.* 270: 28006-28009.
- Shi, H.J., Wu, A.Z., Santos, M., Feng, Z.M., Huang, L., Chen, Y.M., Zhu, K. and Chen, C.L. 2004. Cloning and characterization of rat spermatid protein SSP411: a thioredoxin-like protein. *J. Androl.* 25: 479-493.
- Nusbaum, R., Vogel, K.J. and Ready, K. 2006. Susceptibility to breast cancer: hereditary syndromes and low penetrance genes. *Breast Dis.* 27: 21-50.
- Tai, Y.C., Domchek, S., Parmigiani, G. and Chen, S. 2007. Breast cancer risk among male BRCA1 and BRCA2 mutation carriers. *J. Natl. Cancer Inst.* 99: 1811-1814.
- Yan, J., Jiang, J., Lim, C.A., Wu, Q., Ng, H.H. and Chin, K.C. 2007. Blimp-1 regulates cell growth through repression of p53 transcription. *Proc. Natl. Acad. Sci. USA* 104: 1841-1846.

CHROMOSOMAL LOCATION

Genetic locus: SPATA20 (human) mapping to 17q21.33; Spata2 (mouse) mapping to 11 D.

SOURCE

SPATA20 (S-14) is an affinity purified goat polyclonal antibody raised against a peptide mapping within an internal region of SPATA20 of human origin.

PRODUCT

Each vial contains 200 µg IgG in 1.0 ml of PBS with < 0.1% sodium azide and 0.1% gelatin.

Blocking peptide available for competition studies, sc-109042 P, (100 µg peptide in 0.5 ml PBS containing < 0.1% sodium azide and 0.2% BSA).

APPLICATIONS

SPATA20 (S-14) is recommended for detection of SPATA20 of mouse, rat and human origin by Western Blotting (starting dilution 1:200, dilution range 1:100-1:1000), immunoprecipitation [1-2 µg per 100-500 µg of total protein (1 ml of cell lysate)], immunofluorescence (starting dilution 1:50, dilution range 1:50-1:500) and solid phase ELISA (starting dilution 1:30, dilution range 1:30-1:3000).

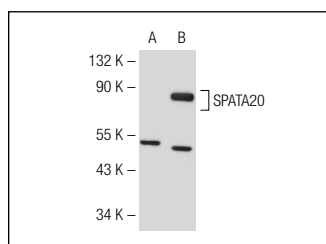
SPATA20 (S-14) is also recommended for detection of SPATA20 in additional species, including equine, bovine and porcine.

Suitable for use as control antibody for SPATA20 siRNA (h): sc-93946, SPATA20 siRNA (m): sc-153718, SPATA20 shRNA Plasmid (h): sc-93946-SH, SPATA20 shRNA Plasmid (m): sc-153718-SH, SPATA20 shRNA (h) Lentiviral Particles: sc-93946-V and SPATA20 shRNA (m) Lentiviral Particles: sc-153718-V.

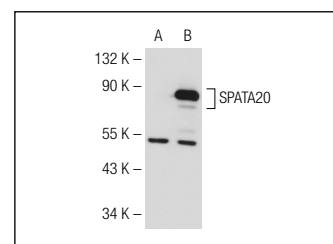
Molecular Weight of SPATA20: 88 kDa.

Positive Controls: SPATA20 (h): 293T Lysate: sc-111791.

DATA



SPATA20 (S-14): sc-109042. Western blot analysis of SPATA20 expression in non-transfected: sc-117752 (A) and human SPATA20 transfected: sc-111791 (B) 293T whole cell lysates.



SPATA20 (S-14): sc-109042. Western blot analysis of SPATA20 expression in non-transfected: sc-117752 (A) and human SPATA20 transfected: sc-117111 (B) 293T whole cell lysates.

STORAGE

Store at 4° C, **DO NOT FREEZE**. Stable for one year from the date of shipment. Non-hazardous. No MSDS required.

RESEARCH USE

For research use only, not for use in diagnostic procedures.



Try **SPATA20 (D-3): sc-365890** or **SPATA20 (H-10): sc-515190**, our highly recommended monoclonal alternatives to SPATA20 (S-14).