

USP40 (E-16): sc-109130

BACKGROUND

The ubiquitin (Ub) pathway involves three sequential enzymatic steps that facilitate the conjugation of Ub and Ub-like molecules to specific protein substrates. Through the use of a wide range of enzymes that can add or remove ubiquitin, the Ub pathway controls many intracellular processes such as signal transduction, transcriptional activation and cell cycle progression. USP40 (ubiquitin specific peptidase 40), also known as ubiquitin thioesterase 40, deubiquitinating enzyme 40 or ubiquitin carboxyl-terminal hydrolase 40, is a 1,235 amino acid protein that belongs to a large family of cysteine proteases that function as deubiquitinating enzymes. Broadly expressed, USP40 catalyzes the conversion of a ubiquitin C-terminal thioester to a free ubiquitin and a thiol, a reaction that may influence several cellular processes. Existing as two isoforms due to alternative splicing events, USP40 is considered a novel target for late-onset Parkinson disease.

CHROMOSOMAL LOCATION

Genetic locus: USP40 (human) mapping to 2q37.1; Usp40 (mouse) mapping to 1 D.

SOURCE

USP40 (E-16) is an affinity purified goat polyclonal antibody raised against a peptide mapping near the N-terminus of USP40 of mouse origin.

PRODUCT

Each vial contains 200 µg IgG in 1.0 ml of PBS with < 0.1% sodium azide and 0.1% gelatin.

Blocking peptide available for competition studies, sc-109130 P, (100 µg peptide in 0.5 ml PBS containing < 0.1% sodium azide and 0.2% BSA).

STORAGE

Store at 4° C, ****DO NOT FREEZE****. Stable for one year from the date of shipment. Non-hazardous. No MSDS required.

APPLICATIONS

USP40 (E-16) is recommended for detection of USP40 of mouse, rat and human origin by Western Blotting (starting dilution 1:200, dilution range 1:100-1:1000), immunoprecipitation [1-2 µg per 100-500 µg of total protein (1 ml of cell lysate)], immunofluorescence (starting dilution 1:50, dilution range 1:50-1:500) and solid phase ELISA (starting dilution 1:30, dilution range 1:30-1:3000); non cross-reactive with other USP family members.

USP40 (E-16) is also recommended for detection of USP40 in additional species, including equine, canine, bovine, porcine and avian.

Suitable for use as control antibody for USP40 siRNA (h): sc-94351, USP40 siRNA (m): sc-154946, USP40 shRNA Plasmid (h): sc-94351-SH, USP40 shRNA Plasmid (m): sc-154946-SH, USP40 shRNA (h) Lentiviral Particles: sc-94351-V and USP40 shRNA (m) Lentiviral Particles: sc-154946-V.

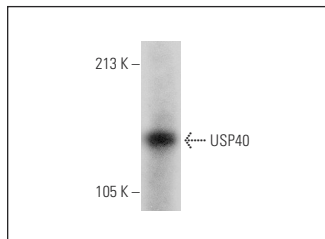
Molecular Weight of USP40: 140 kDa.

Positive Controls: rat testis extract: sc-2400.

RECOMMENDED SECONDARY REAGENTS

To ensure optimal results, the following support (secondary) reagents are recommended: 1) Western Blotting: use donkey anti-goat IgG-HRP: sc-2020 (dilution range: 1:2000-1:100,000) or Cruz Marker™ compatible donkey anti-goat IgG-HRP: sc-2033 (dilution range: 1:2000-1:5000), Cruz Marker™ Molecular Weight Standards: sc-2035, TBS Blotto A Blocking Reagent: sc-2333 and Western Blotting Luminol Reagent: sc-2048. 2) Immunoprecipitation: use Protein A/G PLUS-Agarose: sc-2003 (0.5 ml agarose/2.0 ml). 3) Immunofluorescence: use donkey anti-goat IgG-FITC: sc-2024 (dilution range: 1:100-1:400) or donkey anti-goat IgG-TR: sc-2783 (dilution range: 1:100-1:400) with UltraCruz™ Mounting Medium: sc-24941.

DATA



USP40 (E-16): sc-109130. Western blot analysis of USP40 expression in rat testis tissue extract.

RESEARCH USE

For research use only, not for use in diagnostic procedures.

PROTOCOLS

See our web site at www.scbt.com or our catalog for detailed protocols and support products.

MONOS
Satisfaction
Guaranteed

Try **USP40 (G-8): sc-514248**, our highly recommended monoclonal alternative to USP40 (E-16).