

# CEP57 (N-14): sc-109232

## BACKGROUND

CEP57 (centrosomal protein 57 kDa), also known as PIG8, TSP57 or Translokin, is a 500 amino acid protein that localizes to both the nucleus and the cytoplasm, specifically associating with microtubules at the centrosome. Expressed ubiquitously, CEP57 exists as a homodimer that functions to mediate the mitogenic activity and nuclear translocation of FGF-2, an internalized growth factor, thereby regulating FGF-2 signaling pathways. Additionally, CEP57 is thought to play a role in spermatogenesis, possibly via the indirect regulation of gene expression. Human CEP57 shares 88% sequence identity with its mouse and bovine orthologs, suggesting a highly conserved role between species. Multiple isoforms of CEP57 exist due to alternative splicing events.

## REFERENCES

- Nagase, T., Miyajima, N., Tanaka, A., Sazuka, T., Seki, N., Sato, S., Tabata, S., Ishikawa, K., Kawarabayasi, Y. and Kotani, H. 1995. Prediction of the coding sequences of unidentified human genes. III. The coding sequences of 40 new genes (KIAA0081-KIAA0120) deduced by analysis of cDNA clones from human cell line KG-1. *DNA Res.* 2: 37-43.
- Online Mendelian Inheritance in Man, OMIM™. 2002. Johns Hopkins University, Baltimore, MD. MIM Number: 607951. World Wide Web URL: <http://www.ncbi.nlm.nih.gov/omim/>
- Bossard, C., Laurell, H., Van den Berghe, L., Meunier, S., Zanibellato, C. and Prats, H. 2003. Translokin is an intracellular mediator of FGF-2 trafficking. *Nat. Cell Biol.* 5: 433-439.
- Kim, Y.S., Nakanishi, G., Oudes, A.J., Kim, K.H., Wang, H., Kilpatrick, D.L. and Jetten, A.M. 2004. Tsp57: a novel gene induced during a specific stage of spermatogenesis. *Biol. Reprod.* 70: 106-113.
- Emanuele, M.J. and Stukenberg, P.T. 2007. *Xenopus* Cep57 is a novel kinetochore component involved in microtubule attachment. *Cell* 130: 893-905.
- DeLuca, J.G. 2007. Spindle microtubules: getting attached at both ends. *Curr. Biol.* 17: 966-969.
- Momotani, K., Khromov, A.S., Miyake, T., Stukenberg, P.T. and Somlyo, A.V. 2008. Cep57, a multidomain protein with unique microtubule and centrosomal localization domains. *Biochem. J.* 412: 265-273.

## CHROMOSOMAL LOCATION

Genetic locus: CEP57 (human) mapping to 11q21.

## SOURCE

CEP57 (N-14) is an affinity purified goat polyclonal antibody raised against a peptide mapping at the N-terminus of CEP57 of human origin.

## PRODUCT

Each vial contains 200 µg IgG in 1.0 ml of PBS with < 0.1% sodium azide and 0.1% gelatin.

Blocking peptide available for competition studies, sc-109232 P, (100 µg peptide in 0.5 ml PBS containing < 0.1% sodium azide and 0.2% BSA).

## APPLICATIONS

CEP57 (N-14) is recommended for detection of CEP57 of human origin by Western Blotting (starting dilution 1:200, dilution range 1:100-1:1000), immunoprecipitation [1-2 µg per 100-500 µg of total protein (1 ml of cell lysate)], immunofluorescence (starting dilution 1:50, dilution range 1:50-1:500) and solid phase ELISA (starting dilution 1:30, dilution range 1:30-1:3000); non cross-reactive with other CEP family members.

Suitable for use as control antibody for CEP57 siRNA (h): sc-96282, CEP57 shRNA Plasmid (h): sc-96282-SH and CEP57 shRNA (h) Lentiviral Particles: sc-96282-V.

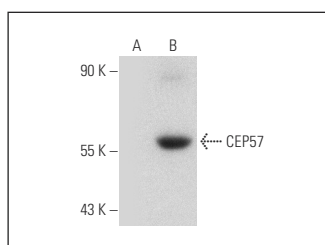
Molecular Weight of CEP57: 57 kDa.

Positive Controls: CEP57 (h): 293T Lysate: sc-110841.

## RECOMMENDED SECONDARY REAGENTS

To ensure optimal results, the following support (secondary) reagents are recommended: 1) Western Blotting: use donkey anti-goat IgG-HRP: sc-2020 (dilution range: 1:2000-1:100,000) or Cruz Marker™ compatible donkey anti-goat IgG-HRP: sc-2033 (dilution range: 1:2000-1:5000), Cruz Marker™ Molecular Weight Standards: sc-2035, TBS Blotto A Blocking Reagent: sc-2333 and Western Blotting Luminol Reagent: sc-2048. 2) Immunoprecipitation: use Protein A/G PLUS-Agarose: sc-2003 (0.5 ml agarose/2.0 ml). 3) Immunofluorescence: use donkey anti-goat IgG-FITC: sc-2024 (dilution range: 1:100-1:400) or donkey anti-goat IgG-TR: sc-2783 (dilution range: 1:100-1:400) with UltraCruz™ Mounting Medium: sc-24941.

## DATA



CEP57 (N-14): sc-109232. Western blot analysis of CEP57 expression in non-transfected: sc-117752 (A) and human CEP57 transfected: sc-110841 (B) 293T whole cell lysates.

## STORAGE

Store at 4° C, \*\*DO NOT FREEZE\*\*. Stable for one year from the date of shipment. Non-hazardous. No MSDS required.

## RESEARCH USE

For research use only, not for use in diagnostic procedures.

## PROTOCOLS

See our web site at [www.scbt.com](http://www.scbt.com) or our catalog for detailed protocols and support products.