

OR5C1 (N-12): sc-109376

BACKGROUND

Olfactory receptors are G protein-coupled receptors that localize to the cilia of olfactory sensory neurons where they display affinity for and bind to a variety of odor molecules. The genes encoding olfactory receptors comprise the largest family in the human genome. The binding of olfactory receptor proteins to odor molecules triggers a signal transduction that propagates nerve impulses throughout the body, ultimately leading to transmission of the signal to the brain and the subsequent perception of smell. OR5C1 (olfactory receptor 5C1) is a 320 amino acid protein. The gene encoding OR5C1 maps to human chromosome 9.

REFERENCES

1. Malnic, B., Hirono, J., Sato, T. and Buck, L.B. 1999. Combinatorial receptor codes for odors. *Cell* 96: 713-723.
2. Glusman, G., Bahar, A., Sharon, D., Pilpel, Y., White, J. and Lancet, D. 2000. The olfactory receptor gene superfamily: data mining, classification, and nomenclature. *Mamm. Genome* 11: 1016-1023.
3. Gaillard, I., Rouquier, S. and Giorgi, D. 2004. Olfactory receptors. *Cell. Mol. Life Sci.* 61: 456-469.
4. Buck, L.B. 2004. Olfactory receptors and odor coding in mammals. *Nutr. Rev.* 62: 184-188.
5. Malnic, B., Godfrey, P.A. and Buck, L.B. 2004. The human olfactory receptor gene family. *Proc. Natl. Acad. Sci. USA* 101: 2584-2589.
6. Khafizov, K., Anselmi, C., Menini, A. and Carloni, P. 2007. Ligand specificity of odorant receptors. *J. Mol. Model.* 13: 401-409.
7. Rinaldi, A. 2007. The scent of life. The exquisite complexity of the sense of smell in animals and humans. *EMBO Rep.* 8: 629-633.

CHROMOSOMAL LOCATION

Genetic locus: OR5C1 (human) mapping to 9q33.2.

SOURCE

OR5C1 (N-12) is an affinity purified goat polyclonal antibody raised against a peptide mapping within an N-terminal extracellular domain of OR5C1 of human origin.

PRODUCT

Each vial contains 200 µg IgG in 1.0 ml of PBS with < 0.1% sodium azide and 0.1% gelatin.

Blocking peptide available for competition studies, sc-109376 P, (100 µg peptide in 0.5 ml PBS containing < 0.1% sodium azide and 0.2% BSA).

STORAGE

Store at 4° C, **DO NOT FREEZE**. Stable for one year from the date of shipment. Non-hazardous. No MSDS required.

APPLICATIONS

OR5C1 (N-12) is recommended for detection of OR5C1 of human origin by Western Blotting (starting dilution 1:200, dilution range 1:100-1:1000), immunoprecipitation [1-2 µg per 100-500 µg of total protein (1 ml of cell lysate)], immunofluorescence (starting dilution 1:50, dilution range 1:50-1:500) and solid phase ELISA (starting dilution 1:30, dilution range 1:30-1:3000); non cross-reactive with other OR5 family members.

OR5C1 (N-12) is also recommended for detection of OR5C1 in additional species, including canine.

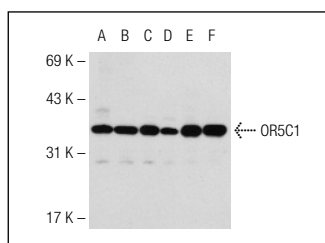
Suitable for use as control antibody for OR5C1 siRNA (h): sc-92622, OR5C1 shRNA Plasmid (h): sc-92622-SH and OR5C1 shRNA (h) Lentiviral Particles: sc-92622-V.

Positive Controls: IMR-32 cell lysate: sc-2409, TE671 cell lysate: sc-2416 or MIA PaCa-2 cell lysate: sc-2285.

RECOMMENDED SECONDARY REAGENTS

To ensure optimal results, the following support (secondary) reagents are recommended: 1) Western Blotting: use donkey anti-goat IgG-HRP: sc-2020 (dilution range: 1:2000-1:100,000) or Cruz Marker™ compatible donkey anti-goat IgG-HRP: sc-2033 (dilution range: 1:2000-1:5000), Cruz Marker™ Molecular Weight Standards: sc-2035, TBS Blotto A Blocking Reagent: sc-2333 and Western Blotting Luminol Reagent: sc-2048. 2) Immunoprecipitation: use Protein A/G PLUS-Agarose: sc-2003 (0.5 ml agarose/2.0 ml). 3) Immunofluorescence: use donkey anti-goat IgG-FITC: sc-2024 (dilution range: 1:100-1:400) or donkey anti-goat IgG-TR: sc-2783 (dilution range: 1:100-1:400) with UltraCruz™ Mounting Medium: sc-24941.

DATA



OR5C1 (N-12): sc-109376. Western blot analysis of OR5C1 expression in IMR-32 (A), SK-N-MC (B), TE671 (C), MIA PaCa-2 (D), U87 MG (E) and Caki-1 (F) whole cell lysates.

RESEARCH USE

For research use only, not for use in diagnostic procedures.

PROTOCOLS

See our web site at www.scbt.com or our catalog for detailed protocols and support products.