

MRVI1a (P-15): sc-10954

BACKGROUND

The integration of the murine leukemia virus (MuLV) into the mammalian genome is frequently associated with insertional mutagenesis of cellular proto-oncogenes and tumor suppressor genes leading to cellular transformation and leukemias. Several proto-oncogenes were initially identified as sites of viral integration, including the tumor-suppressors *Myc*, *Myb*, and *Hox*. A related murine virus, MRV, also induces leukemia through viral integration and the disruption of the MRVI1 encoding gene. MRVI1 is specifically expressed in megakaryocytes and various myeloid leukemias, and its expression is downregulated during monocytic differentiation. The human and murine homologs of MRVI1 share substantial sequence similarity and similar expression patterns and are most closely related to the lymphoid specific protein *Jaw1*. The transcripts generated from MRVI1 are alternatively spliced and initiated from 2 distinct promoters to produce a longer isoform, MRVI1a, which contains an N-terminal 84 amino acid extension that is not present in the otherwise identical, shorter isoform, MRVI1b. These two isoforms have distinct subcellular localization patterns as MRVI1a contains an additional transmembrane domain and localizes to the endoplasmic reticulum, while MRVI1b is diffusely distributed throughout the cell.

REFERENCES

1. Bowerman, B., et al. 1989. A nucleoprotein complex mediates the integration of retroviral DNA. *Genes Dev.* 3: 469-478.
2. Buchberg, A.M., et al. 1990. *Evi-2*, a common integration site involved in murine myeloid leukemogenesis. *Mol. Cell. Biol.* 10: 4658-4666.
3. Behrens, T.W., et al. 1994. *Jaw1*, a lymphoid-restricted membrane protein localized to the endoplasmic reticulum. *J. Immunol.* 153: 682-690.
4. Cho, B.C., et al. 1995. Frequent disruption of the *Nf1* gene by a novel murine AIDS virus-related provirus in BXH-2 murine myeloid lymphomas. *J. Virol.* 69: 7138-7146.
5. Moskow, J.J., et al. 1995. *Meis1*, a PBX1-related homeobox gene involved in myeloid leukemia in BXH-2 mice. *Mol. Cell. Biol.* 15: 5434-5443.
6. Behrens, T.W., et al. 1996. Carboxyl-terminal targeting and novel post-translational processing of *JAW1*, a lymphoid protein of the endoplasmic reticulum. *J. Biol. Chem.* 271: 23528-23534.

CHROMOSOMAL LOCATION

Genetic locus: MRVI1 (human) mapping to 11p15.4; *Mrvi1* (mouse) mapping to 7 F1.

SOURCE

MRVI1a (P-15) is an affinity purified goat polyclonal antibody raised against a peptide mapping within an internal region of MRVI1a of human origin.

PRODUCT

Each vial contains 200 µg IgG in 1.0 ml of PBS with < 0.1% sodium azide and 0.1% gelatin.

Blocking peptide available for competition studies, sc-10954 P, (100 µg peptide in 0.5 ml PBS containing < 0.1% sodium azide and 0.2% BSA).

APPLICATIONS

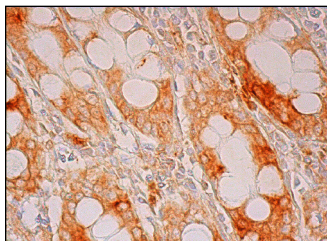
MRVI1a (P-15) is recommended for detection of MRVI1a of mouse and human origin by Western Blotting (starting dilution 1:200, dilution range 1:100-1:1000), immunofluorescence (starting dilution 1:50, dilution range 1:50-1:500), immunohistochemistry (including paraffin-embedded sections) (starting dilution 1:50, dilution range 1:50-1:500) and solid phase ELISA (starting dilution 1:30, dilution range 1:30-1:3000).

Suitable for use as control antibody for MRVI1 siRNA (h): sc-42928, MRVI1 siRNA (m): sc-42929, MRVI1 shRNA Plasmid (h): sc-42928-SH, MRVI1 shRNA Plasmid (m): sc-42929-SH, MRVI1 shRNA (h) Lentiviral Particles: sc-42928-V and MRVI1 shRNA (m) Lentiviral Particles: sc-42929-V.

RECOMMENDED SECONDARY REAGENTS

To ensure optimal results, the following support (secondary) reagents are recommended: 1) Western Blotting: use donkey anti-goat IgG-HRP: sc-2020 (dilution range: 1:2000-1:100,000) or Cruz Marker™ compatible donkey anti-goat IgG-HRP: sc-2033 (dilution range: 1:2000-1:5000), Cruz Marker™ Molecular Weight Standards: sc-2035, TBS Blotto A Blocking Reagent: sc-2333 and Western Blotting Luminol Reagent: sc-2048. 2) Immunofluorescence: use donkey anti-goat IgG-FITC: sc-2024 (dilution range: 1:100-1:400) or donkey anti-goat IgG-TR: sc-2783 (dilution range: 1:100-1:400) with UltraCruz™ Mounting Medium: sc-24941. 3) Immunohistochemistry: use ImmunoCruz™: sc-2053 or ABC: sc-2023 goat IgG Staining Systems.

DATA



MRVI1a (P-15): sc-10954. Immunoperoxidase staining of formalin fixed, paraffin-embedded human rectum tissue showing cytoplasmic staining of glandular cells.

STORAGE

Store at 4° C, ****DO NOT FREEZE****. Stable for one year from the date of shipment. Non-hazardous. No MSDS required.

RESEARCH USE

For research use only, not for use in diagnostic procedures.