

MRP-L17 (G-12): sc-109564

BACKGROUND

Mitochondria have their own translation machinery for production of thirteen proteins that are required for oxidative phosphorylation. MRP-L17 (39S ribosomal protein L17, mitochondrial), also known as LIP2 (LYST-interacting protein 2), is a 175 amino acid protein that is a component of the large ribosomal subunit of the mitochondria. Expressed in adipose tissue, adrenal gland and mammary gland, MRP-L17 is one of the 70 protein components of mitochondrial ribosomes that are encoded by the nuclear genome. The gene encoding MRP-L17 maps to human chromosome 11, which houses over 1,400 genes and comprises nearly 4% of the human genome. Jervell and Lange-Nielsen syndrome, Jacobsen syndrome, Niemann-Pick disease, hereditary angioedema and Smith-Lemli-Opitz syndrome are associated with defects in genes that maps to chromosome 11.

REFERENCES

- Hu, R.M., et al. 2000. Gene expression profiling in the human hypothalamus-pituitary-adrenal axis and full-length cDNA cloning. *Proc. Natl. Acad. Sci. USA* 97: 9543-9548.
- Kenmochi, N., et al. 2001. The human mitochondrial ribosomal protein genes: mapping of 54 genes to the chromosomes and implications for human disorders. *Genomics* 77: 65-70.
- Tchernev, V.T., et al. 2002. The Chediak-Higashi protein interacts with SNARE complex and signal transduction proteins. *Mol. Med.* 8: 56-64.
- Ota, T., et al. 2004. Complete sequencing and characterization of 21,243 full-length human cDNAs. *Nat. Genet.* 36: 40-45.
- Taylor, T.D., et al. 2006. Human chromosome 11 DNA sequence and analysis including novel gene identification. *Nature* 440: 497-500.
- Online Mendelian Inheritance in Man, OMIM™. 2008. Johns Hopkins University, Baltimore, MD. MIM Number: 611830. World Wide Web URL: <http://www.ncbi.nlm.nih.gov/omim/>

CHROMOSOMAL LOCATION

Genetic locus: MRPL17 (human) mapping to 11p15.4; Mrpl17 (mouse) mapping to 7 E3.

SOURCE

MRP-L17 (G-12) is an affinity purified goat polyclonal antibody raised against a peptide mapping within an internal region of MRP-L17 of human origin.

PRODUCT

Each vial contains 200 µg IgG in 1.0 ml of PBS with < 0.1% sodium azide and 0.1% gelatin.

Blocking peptide available for competition studies, sc-109564 P, (100 µg peptide in 0.5 ml PBS containing < 0.1% sodium azide and 0.2% BSA).

STORAGE

Store at 4° C, ****DO NOT FREEZE****. Stable for one year from the date of shipment. Non-hazardous. No MSDS required.

APPLICATIONS

MRP-L17 (G-12) is recommended for detection of MRP-L17 of mouse, rat and human origin by Western Blotting (starting dilution 1:200, dilution range 1:100-1:1000), immunoprecipitation [1-2 µg per 100-500 µg of total protein (1 ml of cell lysate)], immunofluorescence (starting dilution 1:50, dilution range 1:50-1:500) and solid phase ELISA (starting dilution 1:30, dilution range 1:30-1:3000).

MRP-L17 (G-12) is also recommended for detection of MRP-L17 in additional species, including bovine and porcine.

Suitable for use as control antibody for MRP-L17 siRNA (h): sc-96601, MRP-L17 siRNA (m): sc-149585, MRP-L17 shRNA Plasmid (h): sc-96601-SH, MRP-L17 shRNA Plasmid (m): sc-149585-SH, MRP-L17 shRNA (h) Lentiviral Particles: sc-96601-V and MRP-L17 shRNA (m) Lentiviral Particles: sc-149585-V.

Molecular Weight (predicted) of MRP-L17: 20 kDa.

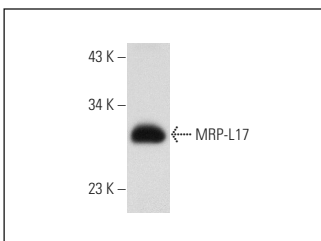
Molecular Weight (observed) of MRP-L17: 29 kDa.

Positive Controls: MRP-L17 (h): 293T Lysate: sc-175949, mouse brain extract: sc-2253 or HeLa whole cell lysate: sc-2200.

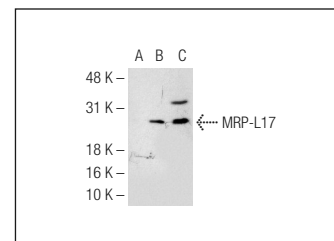
RECOMMENDED SECONDARY REAGENTS

To ensure optimal results, the following support (secondary) reagents are recommended: 1) Western Blotting: use donkey anti-goat IgG-HRP: sc-2020 (dilution range: 1:2000-1:100,000) or Cruz Marker™ compatible donkey anti-goat IgG-HRP: sc-2033 (dilution range: 1:2000-1:5000), Cruz Marker™ Molecular Weight Standards: sc-2035, TBS Blotto A Blocking Reagent: sc-2333 and Western Blotting Luminol Reagent: sc-2048. 2) Immunoprecipitation: use Protein A/G PLUS-Agarose: sc-2003 (0.5 ml agarose/2.0 ml). 3) Immunofluorescence: use donkey anti-goat IgG-FITC: sc-2024 (dilution range: 1:100-1:400) or donkey anti-goat IgG-TR: sc-2783 (dilution range: 1:100-1:400) with UltraCruz™ Mounting Medium: sc-24941.

DATA



MRP-L17 (G-12): sc-109564. Western blot analysis of MRP-L17 expression in mouse brain tissue extract.



MRP-L17 (G-12): sc-109564. Western blot analysis of MRP-L17 expression in non-transfected 293T: sc-117752 (A), human MRP-L17 transfected 293T: sc-175949 (B) and HeLa (C) whole cell lysates.

RESEARCH USE

For research use only, not for use in diagnostic procedures.