

# NDUFS2 (D-13): sc-109593

## BACKGROUND

Located in the mitochondrial inner membrane, mitochondrial complex I is the first and largest enzyme in the electron transport chain of oxidative phosphorylation. By oxidizing NADH that is produced in the Krebs cycle, this complex utilizes the two electrons to reduce ubiquinone to ubiquinol, thereby initiating the passage of electrons to successive complexes and ultimately leading to the reduction of oxygen to water. Mitochondrial complex I consists of over 40 subunits and is of considerable clinical interest since defects in any of the subunits can lead to various myopathies and neuropathies. As a subunit of mitochondrial complex I, NDUFS2 (NADH dehydrogenase [ubiquinone] iron-sulfur protein 2), also designated NADH-ubiquinone oxidoreductase 49 kDa subunit, is a 463 amino acid protein that is suggested to be required for catalytic activity. Defects in the gene encoding NDUFS2 are the cause of complex I mitochondrial respiratory chain deficiency, which is characterized by a variety of symptoms including liver failure, cardiomyopathy and neurodegeneration.

## CHROMOSOMAL LOCATION

Genetic locus: NDUFS2 (human) mapping to 1q23.3; Ndufs2 (mouse) mapping to 1 H3.

## SOURCE

NDUFS2 (D-13) is an affinity purified goat polyclonal antibody raised against a peptide mapping within an internal region of NDUFS2 of human origin.

## PRODUCT

Each vial contains 200 µg IgG in 1.0 ml of PBS with < 0.1% sodium azide and 0.1% gelatin.

Blocking peptide available for competition studies, sc-109593 P, (100 µg peptide in 0.5 ml PBS containing < 0.1% sodium azide and 0.2% BSA).

## RESEARCH USE

For research use only, not for use in diagnostic procedures.

## APPLICATIONS

NDUFS2 (D-13) is recommended for detection of NDUFS2 of mouse, rat and human origin by Western Blotting (starting dilution 1:200, dilution range 1:100-1:1000), immunoprecipitation [1-2 µg per 100-500 µg of total protein (1 ml of cell lysate)], immunofluorescence (starting dilution 1:50, dilution range 1:50-1:500) and solid phase ELISA (starting dilution 1:30, dilution range 1:30-1:3000); non cross-reactive with other NDUFS family members.

NDUFS2 (D-13) is also recommended for detection of NDUFS2 in additional species, including equine, canine, bovine and porcine.

Suitable for use as control antibody for NDUFS2 siRNA (h): sc-78903, NDUFS2 siRNA (m): sc-106290, NDUFS2 shRNA Plasmid (h): sc-78903-SH, NDUFS2 shRNA Plasmid (m): sc-106290-SH, NDUFS2 shRNA (h) Lentiviral Particles: sc-78903-V and NDUFS2 shRNA (m) Lentiviral Particles: sc-106290-V.

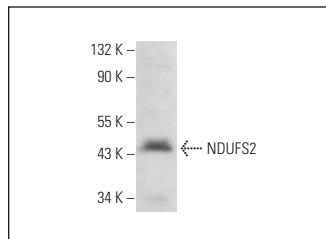
Molecular Weight of NDUFS2: 49 kDa.

Positive Controls: K-562 whole cell lysate: sc-2203.

## RECOMMENDED SECONDARY REAGENTS

To ensure optimal results, the following support (secondary) reagents are recommended: 1) Western Blotting: use donkey anti-goat IgG-HRP: sc-2020 (dilution range: 1:2000-1:100,000) or Cruz Marker™ compatible donkey anti-goat IgG-HRP: sc-2033 (dilution range: 1:2000-1:5000), Cruz Marker™ Molecular Weight Standards: sc-2035, TBS Blotto A Blocking Reagent: sc-2333 and Western Blotting Luminol Reagent: sc-2048. 2) Immunoprecipitation: use Protein A/G PLUS-Agarose: sc-2003 (0.5 ml agarose/2.0 ml). 3) Immunofluorescence: use donkey anti-goat IgG-FITC: sc-2024 (dilution range: 1:100-1:400) or donkey anti-goat IgG-TR: sc-2783 (dilution range: 1:100-1:400) with UltraCruz™ Mounting Medium: sc-24941.

## DATA



NDUFS2 (D-13): sc-109593. Western blot analysis of NDUFS2 expression in K-562 whole cell lysate.

## STORAGE

Store at 4° C, **\*\*DO NOT FREEZE\*\***. Stable for one year from the date of shipment. Non-hazardous. No MSDS required.

## PROTOCOLS

See our web site at [www.scbt.com](http://www.scbt.com) or our catalog for detailed protocols and support products.

**MONOS**  
Satisfaction  
Guaranteed

Try **NDUFS2 (B-3): sc-390596**, our highly recommended monoclonal alternative to NDUFS2 (D-13).