

OR2A5 (T-12): sc-109621

BACKGROUND

Olfactory receptors are G protein-coupled receptors that localize to the cilia of olfactory sensory neurons where they display affinity for and bind to a variety of odor molecules. The genes encoding olfactory receptors comprise the largest family in the human genome. The binding of olfactory receptor proteins to odor molecules triggers a signal transduction that propagates nerve impulses throughout the body, ultimately leading to transmission of the signal to the brain and the subsequent perception of smell. OR2A5 (olfactory receptor 2A5) is a 311 amino acid protein.

REFERENCES

1. Malnic, B., Hirono, J., Sato, T. and Buck, L.B. 1999. Combinatorial receptor codes for odors. *Cell* 96: 713-723.
2. Glusman, G., Bahar, A., Sharon, D., Pilpel, Y., White, J. and Lancet, D. 2000. The olfactory receptor gene superfamily: data mining, classification, and nomenclature. *Mamm. Genome* 11: 1016-1023.
3. Gaillard, I., Rouquier, S. and Giorgi, D. 2004. Olfactory receptors. *Cell. Mol. Life Sci.* 61: 456-469.
4. Buck, L.B. 2004. Olfactory receptors and odor coding in mammals. *Nutr. Rev.* 62: S184-188.
5. Malnic, B., Godfrey, P.A. and Buck, L.B. 2004. The human olfactory receptor gene family. *Proc. Natl. Acad. Sci. USA* 101: 2584-2589.
6. Khafizov, K., Anselmi, C., Menini, A. and Carloni, P. 2007. Ligand specificity of odorant receptors. *J. Mol. Model.* 13: 401-409.
7. Rinaldi, A. 2007. The scent of life. The exquisite complexity of the sense of smell in animals and humans. *EMBO Rep.* 8: 629-633.

CHROMOSOMAL LOCATION

Genetic locus: OR2A5 (human) mapping to 7q35.

SOURCE

OR2A5 (T-12) is an affinity purified goat polyclonal antibody raised against a peptide mapping within an extracellular domain of OR2A5 of human origin.

PRODUCT

Each vial contains 200 µg IgG in 1.0 ml of PBS with < 0.1% sodium azide and 0.1% gelatin.

Blocking peptide available for competition studies, sc-109621 P, (100 µg peptide in 0.5 ml PBS containing < 0.1% sodium azide and 0.2% BSA).

STORAGE

Store at 4° C, ****DO NOT FREEZE****. Stable for one year from the date of shipment. Non-hazardous. No MSDS required.

PROTOCOLS

See our web site at www.scbt.com or our catalog for detailed protocols and support products.

APPLICATIONS

OR2A5 (T-12) is recommended for detection of OR2A5 of human origin by Western Blotting (starting dilution 1:200, dilution range 1:100-1:1000), immunoprecipitation [1-2 µg per 100-500 µg of total protein (1 ml of cell lysate)], immunofluorescence (starting dilution 1:50, dilution range 1:50-1:500) and solid phase ELISA (starting dilution 1:30, dilution range 1:30-1:3000).

Suitable for use as control antibody for OR2A5 siRNA (h): sc-89883, OR2A5 shRNA Plasmid (h): sc-89883-SH and OR2A5 shRNA (h) Lentiviral Particles: sc-89883-V.

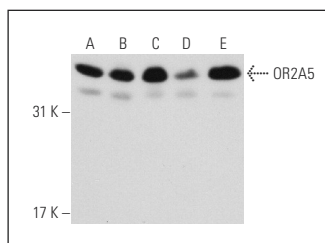
Molecular Weight of OR2A5: 35 kDa.

Positive Controls: WI-38 whole cell lysate: sc-364260, Jurkat whole cell lysate: sc-2204 or TT whole cell lysate: sc-364195.

RECOMMENDED SECONDARY REAGENTS

To ensure optimal results, the following support (secondary) reagents are recommended: 1) Western Blotting: use donkey anti-goat IgG-HRP: sc-2020 (dilution range: 1:2000-1:100,000) or Cruz Marker™ compatible donkey anti-goat IgG-HRP: sc-2033 (dilution range: 1:2000-1:5000), Cruz Marker™ Molecular Weight Standards: sc-2035, TBS Blotto A Blocking Reagent: sc-2333 and Western Blotting Luminol Reagent: sc-2048. 2) Immunoprecipitation: use Protein A/G PLUS-Agarose: sc-2003 (0.5 ml agarose/2.0 ml). 3) Immunofluorescence: use donkey anti-goat IgG-FITC: sc-2024 (dilution range: 1:100-1:400) or donkey anti-goat IgG-TR: sc-2783 (dilution range: 1:100-1:400) with UltraCruz™ Mounting Medium: sc-24941.

DATA



OR2A5 (T-12): sc-109621. Western blot analysis of OR2A5 expression in HeLa (A), Jurkat (B), WI-38 (C), Caki-1 (D) and TT (E) whole cell lysates.

RESEARCH USE

For research use only, not for use in diagnostic procedures.