

# Nrl (S-17): sc-10972

## BACKGROUND

Nrl (neural retina leucine zipper) is a member of the Maf family of transcription factors, which characteristically contain a highly conserved basic leucine zipper (bZIP)-DNA binding motif. Both Nrl and c-Maf preferentially bind to T-MARE sites and are implicated in a wide variety of developmental and physiologic roles. The Maf-Nrl subfamily regulates the expression of cell type-specific genes in tissues of the hematopoietic system, cerebellum and developing hindbrain. Maf and Nrl proteins bind an extended AP-1-like sequence and can form heterodimers with Fos and Jun transcription factors. In retinal cells and photoreceptor cells, Nrl promotes the expression of rhodopsin through binding to the Nrl response element present in the rhodopsin promoter. Nrl is expressed throughout the developing central and peripheral nervous system during neuronal differentiation, and its expression is restricted to neocortex, brainstem and retinal neurons during adulthood.

## CHROMOSOMAL LOCATIONS

Genetic locus: NRL (human) mapping to 14q11.2; Nrl (mouse) mapping to 14 C3.

## SOURCE

Nrl (S-17) is an affinity purified goat polyclonal antibody raised against a peptide mapping within an internal region of Nrl of human origin.

## PRODUCT

Each vial contains 200 µg IgG in 1.0 ml of PBS with < 0.1% sodium azide and 0.1% gelatin. Also available as TransCruz reagent for Gel Supershift and ChIP applications, sc-10972 X, 200 µg/0.1 ml.

Blocking peptide available for competition studies, sc-10972 P, (100 µg peptide in 0.5 ml PBS containing < 0.1% sodium azide and 0.2% BSA).

## APPLICATIONS

Nrl (N-19) is recommended for detection of Nrl of mouse, rat and human origin by Western Blotting (starting dilution 1:200, dilution range 1:100-1:1000), immunoprecipitation [1-2 µg per 100-500 µg of total protein (1 ml of cell lysate)], immunofluorescence (starting dilution 1:50, dilution range 1:50-1:500) and solid phase ELISA (starting dilution 1:30, dilution range 1:30-1:3000).

Nrl (S-17) is also recommended for detection of Nrl in additional species, including equine, canine, bovine and porcine.

Suitable for use as control antibody for Nrl siRNA (h): sc-38109, Nrl siRNA (m): sc-38110, Nrl shRNA Plasmid (h): sc-38109-SH, Nrl shRNA Plasmid (m): sc-38110-SH, Nrl shRNA (h) Lentiviral Particles: sc-38109-V and Nrl shRNA (m) Lentiviral Particles: sc-38110-V.

Nrl (N-19) X TransCruz antibody is recommended for Gel Supershift and ChIP applications.

Molecular Weight (predicted) of Nrl: 26 kDa.

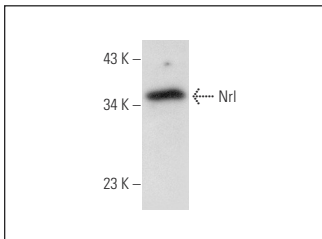
Molecular Weight (observed) of Nrl: 26/29-35 kDa.

Positive Controls: ARPE-19 whole cell lysate: sc-364357, rat eye extract: sc-364805 or mouse eye extract: sc-364241.

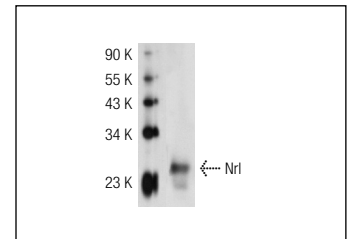
## RECOMMENDED SECONDARY REAGENTS

To ensure optimal results, the following support (secondary) reagents are recommended: 1) Western Blotting: use donkey anti-goat IgG-HRP: sc-2020 (dilution range: 1:2000-1:100,000) or Cruz Marker™ compatible donkey anti-goat IgG-HRP: sc-2033 (dilution range: 1:2000-1:5000), Cruz Marker™ Molecular Weight Standards: sc-2035, TBS Blotto A Blocking Reagent: sc-2333 and Western Blotting Luminol Reagent: sc-2048. 2) Immunoprecipitation: use Protein A/G PLUS-Agarose: sc-2003 (0.5 ml agarose/2.0 ml). 3) Immunofluorescence: use donkey anti-goat IgG-FITC: sc-2024 (dilution range: 1:100-1:400) or donkey anti-goat IgG-TR: sc-2783 (dilution range: 1:100-1:400) with UltraCruz™ Mounting Medium: sc-24941.

## DATA



Nrl (S-17): sc-10972. Western blot analysis of Nrl expression in ARPE-19 whole cell lysate.



Nrl (S-17): sc-10972. Western blot analysis of mouse Nrl expression in mouse eye tissue extract.

## STORAGE

Store at 4° C, **\*\*DO NOT FREEZE\*\***. Stable for one year from the date of shipment. Non-hazardous. No MSDS required.

## RESEARCH USE

For research use only, not for use in diagnostic procedures.

## PROTOCOLS

See our web site at [www.scbt.com](http://www.scbt.com) or our catalog for detailed protocols and support products.

**MONOS**  
Satisfaction  
Guaranteed

Try **Nrl (F-2): sc-374277** or **Nrl (A-6): sc-398046**, our highly recommended monoclonal alternatives to Nrl (S-17).