

# CEACAM16 (S-12): sc-109930

## BACKGROUND

Carcinoembryonic antigen (CEA) is one of the most commonly used tumor markers in serum immunoassay determinations of carcinoma. Members of the CEACAM (carcinoembryonic antigen-related cell adhesion molecule) family contain a single N domain, with structural homology to the immunoglobulin variable domains, followed by a variable number of immunoglobulin constant-like A and/or B domains. CEACAM proteins are involved in immune responses, host/pathogen interactions and controlling tissue homeostasis. As one of several members of the CEACAM family, CEACAM16 (carcinoembryonic antigen-related cell adhesion molecule 16), also known as carcinoembryonic antigen-like 2, is a 484 amino acid single-pass transmembrane protein that contains 2 Ig-like C2-type domains.

## CHROMOSOMAL LOCATION

Genetic locus: CEACAM16 (human) mapping to 19q13.32; Ceacam16 (mouse) mapping to 7 A3.

## SOURCE

CEACAM16 (S-12) is an affinity purified goat polyclonal antibody raised against a peptide mapping within an extracellular domain of CEACAM16 of human origin.

## PRODUCT

Each vial contains 200 µg IgG in 1.0 ml of PBS with < 0.1% sodium azide and 0.1% gelatin.

Blocking peptide available for competition studies, sc-109930 P, (100 µg peptide in 0.5 ml PBS containing < 0.1% sodium azide and 0.2% BSA).

## STORAGE

Store at 4° C, **\*\*DO NOT FREEZE\*\***. Stable for one year from the date of shipment. Non-hazardous. No MSDS required.

## APPLICATIONS

CEACAM16 (S-12) is recommended for detection of CEACAM16 of mouse, rat and human origin by Western Blotting (starting dilution 1:200, dilution range 1:100-1:1000), immunoprecipitation [1-2 µg per 100-500 µg of total protein (1 ml of cell lysate)], immunofluorescence (starting dilution 1:50, dilution range 1:50-1:500) and solid phase ELISA (starting dilution 1:30, dilution range 1:30-1:3000); non cross-reactive with other CEACAM family members.

CEACAM16 (S-12) is also recommended for detection of CEACAM16 in additional species, including equine, canine and porcine.

Suitable for use as control antibody for CEACAM16 siRNA (h): sc-97146, CEACAM16 siRNA (m): sc-142251, CEACAM16 shRNA Plasmid (h): sc-97146-SH, CEACAM16 shRNA Plasmid (m): sc-142251-SH, CEACAM16 shRNA (h) Lentiviral Particles: sc-97146-V and CEACAM16 shRNA (m) Lentiviral Particles: sc-142251-V.

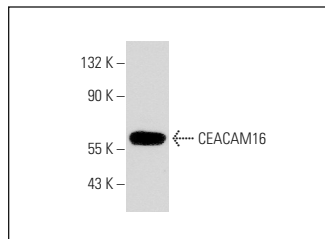
Molecular Weight of CEACAM16: 53 kDa.

Positive Controls: NIH/3T3 whole cell lysate: sc-2210.

## RECOMMENDED SECONDARY REAGENTS

To ensure optimal results, the following support (secondary) reagents are recommended: 1) Western Blotting: use donkey anti-goat IgG-HRP: sc-2020 (dilution range: 1:2000-1:100,000) or Cruz Marker™ compatible donkey anti-goat IgG-HRP: sc-2033 (dilution range: 1:2000-1:5000), Cruz Marker™ Molecular Weight Standards: sc-2035, TBS Blotto A Blocking Reagent: sc-2333 and Western Blotting Luminol Reagent: sc-2048. 2) Immunoprecipitation: use Protein A/G PLUS-Agarose: sc-2003 (0.5 ml agarose/2.0 ml). 3) Immunofluorescence: use donkey anti-goat IgG-FITC: sc-2024 (dilution range: 1:100-1:400) or donkey anti-goat IgG-TR: sc-2783 (dilution range: 1:100-1:400) with UltraCruz™ Mounting Medium: sc-24941.

## DATA



CEACAM16 (S-12): sc-109930. Western blot analysis of CEACAM16 expression in NIH/3T3 whole cell lysate.

## RESEARCH USE

For research use only, not for use in diagnostic procedures.

## PROTOCOLS

See our web site at [www.scbt.com](http://www.scbt.com) or our catalog for detailed protocols and support products.

**MONOS**  
Satisfaction  
Guaranteed

Try **CEACAM16 (A-4): sc-514335**, our highly recommended monoclonal alternative to CEACAM16 (S-12).