

LRP3 (E-13): sc-109956

BACKGROUND

Members of the LDL receptor gene family, including LDLR (low density lipoprotein receptor), LRP1 (low density lipoprotein related protein), Megalin (also designated GP330), VLDLR (very low density lipoprotein receptor) and ApoER2 are characterized by a cluster of cysteine-rich class A repeats, epidermal growth factor (EGF)-like repeats, YWTD repeats and an O-linked sugar domain. Low-density lipoprotein receptor-related protein 3 (LRP3) is a 770 amino acid protein that contains two CUB domains and four LDL-receptor class A domains. LRP3 is widely expressed with highest expression in skeletal muscle and ovary and lowest expression in testis, colon and leukocytes. LRP3 is potentially a membrane receptor involved in the internalization of lipophilic molecules and/or signal transduction.

REFERENCES

1. Ishii, H., Kim, D.H., Fujita, T., Endo, Y., Saeki, S. and Yamamoto, T.T. 1998. cDNA cloning of a new low-density lipoprotein receptor-related protein and mapping of its gene (LRP3) to chromosome bands 19q12-q13. *Genomics* 51: 132-135.
2. Croy, J.E., Shin, W.D., Knauer, M.F., Knauer, D.J. and Komives, E.A. 2003. All three LDL receptor homology regions of the LDL receptor-related protein bind multiple ligands. *Biochemistry* 42: 13049-13057.
3. Gonias, S.L., Wu, L. and Salicioni, A.M. 2004. Low density lipoprotein receptor-related protein: regulation of the plasma membrane proteome. *Thromb. Haemost.* 91: 1056-1064.
4. May, P., Herz, J. and Bock, H.H. 2005. Molecular mechanisms of lipoprotein receptor signalling. *Cell. Mol. Life Sci.* 62: 2325-2338.
5. May, P., Woldt, E., Matz, R.L. and Boucher, P. 2007. The LDL receptor-related protein (LRP) family: an old family of proteins with new physiological functions. *Ann. Med.* 39: 219-228.
6. Jaeger, S. and Pietrzik, C.U. 2008. Functional role of lipoprotein receptors in Alzheimer's disease. *Curr. Alzheimer Res.* 5: 15-25.

CHROMOSOMAL LOCATION

Genetic locus: LRP3 (human) mapping to 19q13.11; Lrp3 (mouse) mapping to 7 B1.

SOURCE

LRP3 (E-13) is an affinity purified goat polyclonal antibody raised against a peptide mapping within an extracellular domain of LRP3 of human origin.

PRODUCT

Each vial contains 200 µg IgG in 1.0 ml of PBS with < 0.1% sodium azide and 0.1% gelatin.

Blocking peptide available for competition studies, sc-109956 P, (100 µg peptide in 0.5 ml PBS containing < 0.1% sodium azide and 0.2% BSA).

STORAGE

Store at 4° C, ****DO NOT FREEZE****. Stable for one year from the date of shipment. Non-hazardous. No MSDS required.

APPLICATIONS

LRP3 (E-13) is recommended for detection of All LRP3 isoforms 1-3 of mouse, rat and human origin by Western Blotting (starting dilution 1:200, dilution range 1:100-1:1000), immunofluorescence (starting dilution 1:50, dilution range 1:50-1:500) and solid phase ELISA (starting dilution 1:30, dilution range 1:30-1:3000); non cross-reactive with other LRP family members.

LRP3 (E-13) is also recommended for detection of All LRP3 isoforms 1-3 in additional species, including equine, canine, bovine and porcine.

Suitable for use as control antibody for LRP3 siRNA (h): sc-97441, LRP3 siRNA (m): sc-149048, LRP3 shRNA Plasmid (h): sc-97441-SH, LRP3 shRNA Plasmid (m): sc-149048-SH, LRP3 shRNA (h) Lentiviral Particles: sc-97441-V and LRP3 shRNA (m) Lentiviral Particles: sc-149048-V.

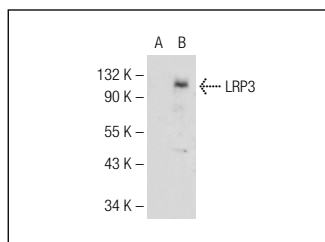
Molecular Weight of LRP3: 83 kDa.

Positive Controls: LRP3 (h): 293T Lysate: sc-173161.

RECOMMENDED SECONDARY REAGENTS

To ensure optimal results, the following support (secondary) reagents are recommended: 1) Western Blotting: use donkey anti-goat IgG-HRP: sc-2020 (dilution range: 1:2000-1:100,000) or Cruz Marker™ compatible donkey anti-goat IgG-HRP: sc-2033 (dilution range: 1:2000-1:5000), Cruz Marker™ Molecular Weight Standards: sc-2035, TBS Blotto A Blocking Reagent: sc-2333 and Western Blotting Luminol Reagent: sc-2048. 2) Immunofluorescence: use donkey anti-goat IgG-FITC: sc-2024 (dilution range: 1:100-1:400) or donkey anti-goat IgG-TR: sc-2783 (dilution range: 1:100-1:400) with UltraCruz™ Mounting Medium: sc-24941.

DATA



LRP3 (E-13): sc-109956. Western blot analysis of LRP3 expression in non-transfected: sc-117752 (A) and human LRP3 transfected: sc-173161 (B) 293T whole cell lysates.

RESEARCH USE

For research use only, not for use in diagnostic procedures.


 MONOS
Satisfaction
Guaranteed

Try **LRP3 (D-8): sc-373736**, our highly recommended monoclonal alternative to LRP3 (E-13).