

MRP-L49 (P-13): sc-109964

BACKGROUND

Mitochondrial ribosomes consist of a large 39S subunit and a small 28S subunit, both of which are comprised of multiple mitochondrial ribosomal proteins (MRPs) that are encoded by nuclear genes and are essential for protein synthesis within mitochondria. MRP-L49 (mitochondrial ribosomal protein L49), also known as Neighbor of FAU and Protein NOF1, is a 166 amino acid protein that localizes to the mitochondrion, where it exists as a component of the 39S ribosomal subunit and works in conjunction with other MRPs to mediate protein synthesis. The gene encoding MRP-L49 maps to human chromosome 11, which houses over 1,400 genes and comprises nearly 4% of the human genome. Jervell and Lange-Nielsen syndrome, Jacobsen syndrome, Niemann-Pick disease, hereditary angioedema and Smith-Lemli-Opitz syndrome are associated with defects in genes that maps to chromosome 11.

REFERENCES

1. Kas, K., et al. 1996. Isolation, cDNA, and genomic structure of a conserved gene (NOF) at chromosome 11q13 next to FAU and oriented in the opposite transcriptional orientation. *Genomics* 34: 433-436.
2. Graack, H.R. and Wittmann-Liebold, B. 1998. Mitochondrial ribosomal proteins (MRPs) of yeast. *Biochem. J.* 329: 433-448.
3. Kenmochi, N., et al. 2001. The human mitochondrial ribosomal protein genes: mapping of 54 genes to the chromosomes and implications for human disorders. *Genomics* 77: 65-70.
4. Suzuki, T., et al. 2001. Structural compensation for the deficit of rRNA with proteins in the mammalian mitochondrial ribosome. Systematic analysis of protein components of the large ribosomal subunit from mammalian mitochondria. *J. Biol. Chem.* 276: 21724-21736.
5. Gerhard, D.S., et al. 2004. The status, quality, and expansion of the NIH full-length cDNA project: the Mammalian Gene Collection (MGC). *Genome Res.* 14: 2121-2127.
6. O'Brien, T.W., et al. 2005. Nuclear MRP genes and mitochondrial disease. *Gene* 354: 147-151.

CHROMOSOMAL LOCATION

Genetic locus: MRPL49 (human) mapping to 11q13.1; Mrpl49 (mouse) mapping to 19 A.

SOURCE

MRP-L49 (P-13) is an affinity purified goat polyclonal antibody raised against a peptide mapping within an internal region of MRP-L49 of human origin.

PRODUCT

Each vial contains 200 µg IgG in 1.0 ml of PBS with < 0.1% sodium azide and 0.1% gelatin.

Blocking peptide available for competition studies, sc-109964 P, (100 µg peptide in 0.5 ml PBS containing < 0.1% sodium azide and 0.2% BSA).

RESEARCH USE

For research use only, not for use in diagnostic procedures.

APPLICATIONS

MRP-L49 (P-13) is recommended for detection of MRP-L49 of mouse, rat and human origin by Western Blotting (starting dilution 1:200, dilution range 1:100-1:1000), immunoprecipitation [1-2 µg per 100-500 µg of total protein (1 ml of cell lysate)], immunofluorescence (starting dilution 1:50, dilution range 1:50-1:500) and solid phase ELISA (starting dilution 1:30, dilution range 1:30-1:3000); non cross-reactive with other MRP family members.

MRP-L49 (P-13) is also recommended for detection of MRP-L49 in additional species, including equine, canine, bovine and porcine.

Suitable for use as control antibody for MRP-L49 siRNA (h): sc-97026, MRP-L49 siRNA (m): sc-149610, MRP-L49 shRNA Plasmid (h): sc-97026-SH, MRP-L49 shRNA Plasmid (m): sc-149610-SH, MRP-L49 shRNA (h) Lentiviral Particles: sc-97026-V and MRP-L49 shRNA (m) Lentiviral Particles: sc-149610-V.

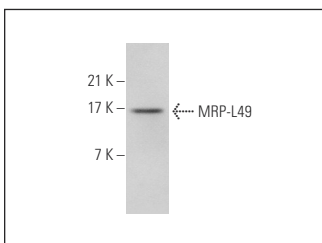
Molecular Weight of MRP-L49: 19 kDa.

Positive Controls: Hep G2 cell lysate: sc-2227.

RECOMMENDED SECONDARY REAGENTS

To ensure optimal results, the following support (secondary) reagents are recommended: 1) Western Blotting: use donkey anti-goat IgG-HRP: sc-2020 (dilution range: 1:2000-1:100,000) or Cruz Marker™ compatible donkey anti-goat IgG-HRP: sc-2033 (dilution range: 1:2000-1:5000), Cruz Marker™ Molecular Weight Standards: sc-2035, TBS Blotto A Blocking Reagent: sc-2333 and Western Blotting Luminol Reagent: sc-2048. 2) Immunoprecipitation: use Protein A/G PLUS-Agarose: sc-2003 (0.5 ml agarose/2.0 ml). 3) Immunofluorescence: use donkey anti-goat IgG-FITC: sc-2024 (dilution range: 1:100-1:400) or donkey anti-goat IgG-TR: sc-2783 (dilution range: 1:100-1:400) with UltraCruz™ Mounting Medium: sc-24941.

DATA



MRP-L49 (P-13): sc-109964. Western blot analysis of MRP-L49 expression in Hep G2 whole cell lysate.

STORAGE

Store at 4° C, **DO NOT FREEZE**. Stable for one year from the date of shipment. Non-hazardous. No MSDS required.

PROTOCOLS

See our web site at www.scbt.com or our catalog for detailed protocols and support products.