

## Emt (C-20): sc-1103

### BACKGROUND

The Tec family of non-receptor tyrosine kinases is composed of six proteins designated Tec, Emt (also known as Itk or Tsk), Btk (previously known as Atk, BPK or Emb), Bmx, Txk (also known as Rlk) and Dsrc28C. All members of the family contain SH3 and SH2 domains and, with the exception of Txk and Dsrc28C, also contain a pleckstrin homology (PH) and a Tec homology (TH) domain in their amino termini. Four alternatively spliced forms of Tec are found to be expressed broadly in cells of hematopoietic lineage and hepatocytes. The Emt gene product associates with CD28 and becomes activated subsequent to CD28 ligation. Btk is necessary for proper B cell development, and mutations in the gene encoding Btk have been associated with families suffering from X-linked agammaglobulinemia, also referred to as Bruton's disease. The Bmx protein shares a high degree of homology with Btk and seems to be expressed at highest levels in the heart. Txk expression is T cell-specific, while expression of the *Drosophila* Tec homolog, Dsrc28C, is developmentally regulated.

### CHROMOSOMAL LOCATION

Genetic locus: ITK (human) mapping to 5q33.3.

### SOURCE

Emt (C-20) is an affinity purified goat polyclonal antibody raised against a peptide mapping at the C-terminus of Emt of human origin.

### PRODUCT

Each vial contains 200 µg IgG in 1.0 ml of PBS with < 0.1% sodium azide and 0.1% gelatin.

Blocking peptide available for competition studies, sc-1103 P, (100 µg peptide in 0.5 ml PBS containing < 0.1% sodium azide and 0.2% BSA).

### STORAGE

Store at 4° C, **\*\*DO NOT FREEZE\*\***. Stable for one year from the date of shipment. Non-hazardous. No MSDS required.

### APPLICATIONS

Emt (C-20) is recommended for detection of Emt of human origin by Western Blotting (starting dilution 1:200, dilution range 1:100-1:1000), immunoprecipitation [1-2 µg per 100-500 µg of total protein (1 ml of cell lysate)], immunofluorescence (starting dilution 1:50, dilution range 1:50-1:500) and solid phase ELISA (starting dilution 1:30, dilution range 1:30-1:3000).

Emt (C-20) is also recommended for detection of Emt in additional species, including bovine.

Suitable for use as control antibody for Emt siRNA (h): sc-35300, Emt shRNA Plasmid (h): sc-35300-SH and Emt shRNA (h) Lentiviral Particles: sc-35300-V.

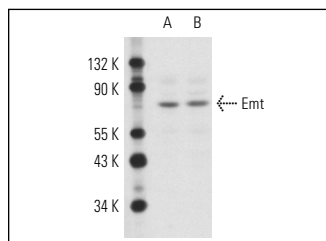
Molecular Weight of Emt: 72 kDa.

Positive Controls: HuT 78 whole cell lysate: sc-2208 or Jurkat whole cell lysate: sc-2204.

### RECOMMENDED SECONDARY REAGENTS

To ensure optimal results, the following support (secondary) reagents are recommended: 1) Western Blotting: use donkey anti-goat IgG-HRP: sc-2020 (dilution range: 1:2000-1:100,000) or Cruz Marker™ compatible donkey anti-goat IgG-HRP: sc-2033 (dilution range: 1:2000-1:5000), Cruz Marker™ Molecular Weight Standards: sc-2035, TBS Blotto A Blocking Reagent: sc-2333 and Western Blotting Luminol Reagent: sc-2048. 2) Immunoprecipitation: use Protein A/G PLUS-Agarose: sc-2003 (0.5 ml agarose/2.0 ml). 3) Immunofluorescence: use donkey anti-goat IgG-FITC: sc-2024 (dilution range: 1:100-1:400) or donkey anti-goat IgG-TR: sc-2783 (dilution range: 1:100-1:400) with UltraCruz™ Mounting Medium: sc-24941.

### DATA



Emt (C-20): sc-1103. Western blot analysis of Emt expression in HuT 78 (A) and CTLL-2 (B) whole cell lysates.

### SELECT PRODUCT CITATIONS

1. Gorska, M.M., et al. 2004. Unc119, a novel activator of Lck/Fyn, is essential for T cell activation. J. Exp. Med. 199: 369-379.

### RESEARCH USE

For research use only, not for use in diagnostic procedures.

### PROTOCOLS

See our web site at [www.scbt.com](http://www.scbt.com) or our catalog for detailed protocols and support products.

**MONOS**  
Satisfaction  
Guaranteed

Try **Emt (2F12): sc-23902**, our highly recommended monoclonal alternative to Emt (C-20).