

DREAM (h): 293 Lysate: sc-111016

BACKGROUND

DREAM (for DRE-antagonist modulator) is a Ca^{2+} -regulated transcriptional repressor that specifically binds to the downstream regulatory elements (DRE). DRE is a regulatory sequence that silences basal transcription and is localized to the promoter region of the gene encoding human prodynorphin, an opioid peptide involved in memory acquisition and pain. DREAM forms functional homotetramers that are required for the interaction with the DRE. This association is highly influenced by calcium, as an increase in Ca^{2+} directly inhibits DREAM binding and thereby blocks the repressor activity of DREAM. DREAM transcripts are detected in brain, thymus and thyroid gland, and it is expressed as a nuclear protein. DREAM has been shown to inhibit transcription of other proteins containing DRE-like motifs, including the gene encoding for the AP-1 transcription factor c-Fos, suggesting that DREAM may influence a wide variety of cellular genes.

REFERENCES

1. Morgan, J.I. and Curran, T. 1986. Role of ion flux in the control of c-Fos expression. *Nature* 322: 552-555.
2. Weisskopf, M.G., Zalutsky, R.A. and Nicoll, R.A. 1993. The opioid peptide Dynorphin mediates heterosynaptic depression of hippocampal mossy fibre synapses and modulates long-term potentiation. *Nature* 365: 188.
3. Hurd, Y.L. 1996. Differential messenger RNA expression of prodynorphin and Proenkephalin in the human brain. *Neuroscience* 72: 767-783.
4. Carrión, A.M., Mellström, B. and Naranjo, J.R. 1998. Protein kinase A-dependent derepression of the human prodynorphin gene via differential binding to an intragenic silencer element. *Mol. Cell. Biol.* 18: 6921-6929.
5. Mandel, G. and Goodman, R.H. 1999. Cell signaling. DREAM on without calcium. *Nature* 398: 29-30.
6. Carrión, A.M., Link, W.A., Ledo, F., Mellström, B. and Naranjo, J.R. 1999. DREAM is a Ca^{2+} -regulated transcriptional repressor. *Nature* 398: 80-84.

CHROMOSOMAL LOCATION

Genetic locus: KCNIP3 (human) mapping to 2q21.1.

PRODUCT

DREAM (h): 293 Lysate represents a lysate of human DREAM transfected 293 cells and is provided as 100 μ g protein in 200 μ l SDS-PAGE buffer.

APPLICATIONS

DREAM (h): 293 Lysate is suitable as a Western Blotting positive control for human reactive DREAM antibodies.

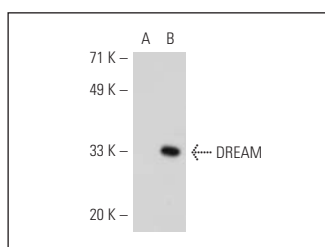
Control 293 Lysate: sc-110760 is available as a Western Blotting negative control lysate derived from non-transfected 293 cells.

DREAM (FL-214): sc-9142 is recommended as a positive control antibody for Western Blot analysis of enhanced human DREAM expression in DREAM transfected 293 cells (starting dilution 1:100, dilution range 1:100-1:1,000).

RECOMMENDED SECONDARY REAGENTS

To ensure optimal results, the following support (secondary) reagents are recommended: 1) Western Blotting: use goat anti-rabbit IgG-HRP: sc-2004 (dilution range: 1:2000-1:100,000) or Cruz Marker™ compatible goat anti-rabbit IgG-HRP: sc-2030 (dilution range: 1:2000-1:5000), Cruz Marker™ Molecular Weight Standards: sc-2035, TBS Blotto A Blocking Reagent: sc-2333 and Western Blotting Luminol Reagent: sc-2048.

DATA



DREAM (FL-214): sc-9142. Western blot analysis of DREAM expression in non-transfected: sc-110760 (A) and human DREAM transfected: sc-111016 (B) 293 whole cell lysates.

STORAGE

Store at -20° C. Repeated freezing and thawing should be minimized. Sample vial should be boiled once prior to use. Non-hazardous. No MSDS required.

RESEARCH USE

For research use only, not for use in diagnostic procedures.

PROTOCOLS

See our web site at www.scbt.com or our catalog for detailed protocols and support products.