

# EWS (h2): 293 Lysate: sc-111059

## BACKGROUND

EWS is a nuclear RNA-binding protein. As a result of chromosome translocation, the EWS gene is fused to a variety of transcription factors, including ATF-1 in human neoplasias. In the Ewing family of tumors, the N-terminal domain of EWS is fused to the DNA-binding domain of various ETS transcription factors, including Fli-1, Erg, ETV1, E1AF and FEV. The EWS/Fli-1 chimeric protein acts as a more potent transcriptional activator than Fli-1 and can promote cell transformation. Two functional regions have been identified in EWS; an amino-terminal region (domain A), that has little transactivation activity but transforms efficiently when fused to Fli-1, and a distal region (domain B), which shows transactivation activity but transforms less efficiently when fused to Fli-1.

## REFERENCES

1. Delattre, O., Zucman, J., Plougastel, B., Desmaze, C., Melot, T., Peter, M., Kovar, H., Joubert, I., de Jong, P., Rouleau, G., et al. 1992. Gene fusion with an ETS DNA-binding domain caused by chromosome translocation in human tumours. *Nature* 359: 162-165.
2. May, W.A., Lessnick, S.L., Braun, B.S., Klemsz, M., Lewis, B.C., Lunsford, L.B., Hromas, R. and Denny, C.T. 1993. The Ewing's sarcoma EWS/Fli-1 fusion gene encodes a more potent transcriptional activator and is a more powerful transforming gene than Fli-1. *Mol. Cell. Biol.* 13: 7393-7398.
3. Sorenson, P.H., Lessnick, S.L., Lopez-Terrada, D., Liu, X.F., Triche, T.J. and Denny, C.T. 1994. A second Ewing's sarcoma translocation, t(21;22), fuses the EWS gene to another ETS-family transcription factor, ERG. *Nat. Genet.* 6: 146-151.
4. Lessnick, S.L., Braun, B.S., Denny, C.T. and May, W.A. 1995. Multiple domains mediate transformation by the Ewing's sarcoma EWS/Fli-1 fusion gene. *Oncogene* 10: 423-431.
5. Jeon, I.S., Davis, J.N., Braun, B.S., Sublett, J.E., Roussel, M.F., Denny, C.T. and Shapiro, D.N. 1995. A variant Ewing's sarcoma translocation (7;22) fuses the EWS gene to the ETS gene ETV1. *Oncogene* 10: 1229-1234.
6. Fujimura, Y., Ohno, T., Siddique, H., Lee, L., Rao, V.N. and Reddy, E.S. 1996. The EWS-ATF-1 gene involved in malignant melanoma of soft parts with t(12;22) chromosome translocation, encodes a constitutive transcriptional activator. *Oncogene* 12: 159-167.
7. Kaneko, Y., Kobayashi, H., Handa, M., Satake, N. and Maseki, N. 1997. EWS-Erg fusion transcript produced by chromosomal insertion in a Ewing's sarcoma. *Genes Chromosomes Cancer* 18: 228-231.
8. Peter, M., Couturier, J., Pacquement, H., Michon, J., Thomas, G., Magdelenat, H. and Delattre, O. 1997. A new member of the ETS family fused to EWS in Ewing tumors. *Oncogene* 4: 1159-1164.

## CHROMOSOMAL LOCATION

Genetic locus: EWSR1 (human) mapping to 22q12.2.

## PRODUCT

EWS (h2): 293 Lysate represents a lysate of human EWS transfected 293 cells and is provided as 100 µg protein in 200 µl SDS-PAGE buffer.

## APPLICATIONS

EWS (h2): 293 Lysate is suitable as a Western Blotting positive control for human reactive EWS antibodies. Recommended use: 10-20 µl per lane.

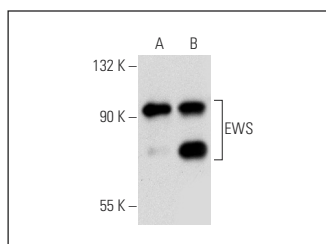
Control 293 Lysate: sc-110760 is available as a Western Blotting negative control lysate derived from non-transfected 293 cells.

EWS (G-5): sc-28327 is recommended as a positive control antibody for Western Blot analysis of enhanced human EWS expression in EWS transfected 293 cells (starting dilution 1:100, dilution range 1:100-1:1,000).

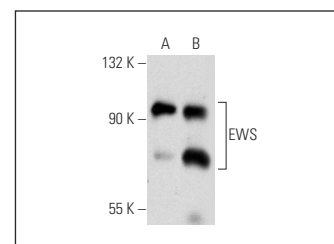
## RECOMMENDED SUPPORT REAGENTS

To ensure optimal results, the following support reagents are recommended:  
 1) Western Blotting: use m-IgGκ BP-HRP: sc-516102 or m-IgGκ BP-HRP (Cruz Marker): sc-516102-CM (dilution range: 1:1000-1:10000), Cruz Marker™ Molecular Weight Standards: sc-2035, UltraCruz® Blocking Reagent: sc-516214 and Western Blotting Luminol Reagent: sc-2048.

## DATA



EWS (G-5): sc-28327. Western blot analysis of EWS expression in non-transfected: sc-110760 (A) and human EWS transfected: sc-111059 (B) 293 whole cell lysates.



EWS (C-9): sc-48404. Western blot analysis of EWS expression in non-transfected: sc-110760 (A) and human EWS transfected: sc-111059 (B) 293 whole cell lysates.

## STORAGE

Store at -20° C. Repeated freezing and thawing should be minimized. Sample vial should be boiled once prior to use. Non-hazardous. No MSDS required.

## RESEARCH USE

For research use only, not for use in diagnostic procedures.

## PROTOCOLS

See our web site at [www.scbt.com](http://www.scbt.com) for detailed protocols and support products.