

TCL-1B (N-19): sc-11161

BACKGROUND

T cell leukemia/lymphoma protein 1B, TCL-1B, (also designated TML1, TCL/MTCP1-like 1, Syncytiotrophoblast-specific protein, and SYN-1), is a protein involved in T cell prolymphocytic leukemia (T-PLL). TCL-1B is located within the region on chromosome 14q32.1, which is frequently involved in chromosomal translocations and inversions with one of the T cell receptor loci in human T cell leukemias and lymphomas. TCL-1B is activated by chromosomal rearrangements involving the TCL1 locus. In mouse, TCL-1B is represented by five homologues, TCL-1B 1-5. The crystal structure of TCL-1B suggests that it may play a role in the transport of small molecules such as retinoids, nucleotides, and fatty acids. TCL-1B is found in both the nucleus and the cytoplasm of normal bone marrow and peripheral lymphocytes.

REFERENCES

1. Fu, T.B., et al. 1994. Characterization and localization of the TCL-1 oncogene product. *Cancer Res.* 54: 6297-6301.
2. Fu, Z.Q., et al. 1998. Crystal structure of MTCP-1: implications for role of TCL-1 and MTCP-1 in T cell malignancies. *Proc. Natl. Acad. Sci. USA* 95: 3413-3418.
3. Sugimoto, J., et al. 1999. Identification of the TCL1/MTCP1-like 1 (TML1) gene from the region next to the TCL1 locus. *Cancer Res.* 59: 2313-2317.
4. Pekarsky, Y., et al. 1999. Abnormalities at 14q32.1 in T cell malignancies involve two oncogenes. *Proc. Natl. Acad. Sci. USA* 96: 2949-2951.
5. Hallas, C., et al. 1999. Genomic analysis of human and mouse TCL1 loci reveals a complex of tightly clustered genes. *Proc. Natl. Acad. Sci. USA* 96: 14418-14423.
6. Pekarsky, Y., et al. 2000. TCL1 enhances Akt kinase activity and mediates its nuclear translocation. *Proc. Natl. Acad. Sci. USA* 97: 3028-3033.

CHROMOSOMAL LOCATION

Genetic locus: TCL1B (human) mapping to 14q32.1.

SOURCE

TCL-1B (N-19) is an affinity purified goat polyclonal antibody raised against a peptide mapping at the N-terminus of TCL-1B of human origin.

PRODUCT

Each vial contains 200 µg IgG in 1.0 ml of PBS with < 0.1% sodium azide and 0.1% gelatin.

Blocking peptide available for competition studies, sc-11161 P, (100 µg peptide in 0.5 ml PBS containing < 0.1% sodium azide and 0.2% BSA).

STORAGE

Store at 4° C, ****DO NOT FREEZE****. Stable for one year from the date of shipment. Non-hazardous. No MSDS required.

PROTOCOLS

See our web site at www.scbt.com or our catalog for detailed protocols and support products.

APPLICATIONS

TCL-1B (N-19) is recommended for detection of TCL-1B of human origin by Western Blotting (starting dilution 1:200, dilution range 1:100-1:1000, immunoprecipitation [1-2 µg per 100-500 µg of total protein (1 ml of cell lysate)], immunofluorescence (starting dilution 1:50, dilution range 1:50-1:500) and solid phase ELISA (starting dilution 1:30, dilution range 1:30-1:3000).

Suitable for use as control antibody for TCL-1B siRNA (h): sc-42990, TCL-1B shRNA Plasmid (h): sc-42990-SH and TCL-1B shRNA (h) Lentiviral Particles: sc-42990-V.

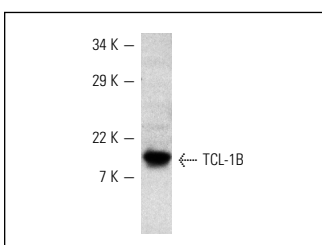
Molecular Weight of TCL-1B: 14 kDa.

Positive Controls: JM1 whole cell lysate: sc-364233.

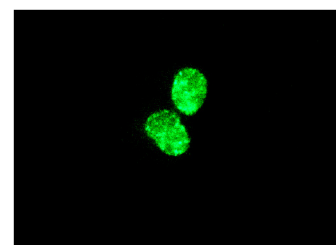
RECOMMENDED SECONDARY REAGENTS

To ensure optimal results, the following support (secondary) reagents are recommended: 1) Western Blotting: use donkey anti-goat IgG-HRP: sc-2020 (dilution range: 1:2000-1:100,000) or Cruz Marker™ compatible donkey anti-goat IgG-HRP: sc-2033 (dilution range: 1:2000-1:5000), Cruz Marker™ Molecular Weight Standards: sc-2035, TBS Blotto A Blocking Reagent: sc-2333 and Western Blotting Luminol Reagent: sc-2048. 2) Immunoprecipitation: use Protein A/G PLUS-Agarose: sc-2003 (0.5 ml agarose/2.0 ml). 3) Immunofluorescence: use donkey anti-goat IgG-FITC: sc-2024 (dilution range: 1:100-1:400) or donkey anti-goat IgG-TR: sc-2783 (dilution range: 1:100-1:400) with UltraCruz™ Mounting Medium: sc-24941.

DATA



TCL-1B (N-19): sc-11161. Western blot analysis of TCL-1B expression in JM1 whole cell lysate.



TCL-1B (N-19): sc-11161. Immunofluorescence staining of methanol-fixed JM1 cells showing nuclear staining.

RESEARCH USE

For research use only, not for use in diagnostic procedures.

MONOS
Satisfaction
Guaranteed

Try **TCL-1B (H-3): sc-365169** or **TCL-1B (E-1): sc-515117**, our highly recommended monoclonal alternatives to TCL-1B (N-19).