

ASC-1 (K-16): sc-11234

BACKGROUND

Activating signal cointegrator-1 (ASC-1, originally identified as TRIP4) is a transcriptional coactivator of nuclear receptors that associates with specific components of the RNA polymerase II complex and binds the basal transcription factors TBP and TFIIA. ASC-1 functions with the transcription integrators SRC-1 and CBP/p300 through its zinc-finger motif and is dependent on their ligand-dependent transactivation domain, AF2. Endogenous ASC-1 in HeLa cells is predominantly a nuclear protein. Under conditions of serum starvation, ASC-1 localizes to the cytoplasm. However, when serum starved in the presence of ligand or coexpressed CBP or SRC-1, ASC-1 remains in the nucleus. This behavior of ASC-1 suggests that it may play an important role in establishing distinct coactivator complexes under different cellular conditions.

CHROMOSOMAL LOCATION

Genetic locus: TRIP4 (human) mapping to 15q22.31; Trip4 (mouse) mapping to 9 C.

SOURCE

ASC-1 (K-16) is an affinity purified goat polyclonal antibody raised against a peptide mapping within an internal region of ASC-1 of human origin.

PRODUCT

Each vial contains 200 µg IgG in 1.0 ml of PBS with < 0.1% sodium azide and 0.1% gelatin. Also available as TransCruz reagent for Gel Supershift and ChIP applications, sc-11234 X, 200 µg/0.1 ml.

Blocking peptide available for competition studies, sc-11234 P, (100 µg peptide in 0.5 ml PBS containing < 0.1% sodium azide and 0.2% BSA).

APPLICATIONS

ASC-1 (K-16) is recommended for detection of ASC-1 of mouse, rat and human origin by Western Blotting (starting dilution 1:200, dilution range 1:100-1:1000), immunoprecipitation [1-2 µg per 100-500 µg of total protein (1 ml of cell lysate)], immunofluorescence (starting dilution 1:50, dilution range 1:50-1:500), immunohistochemistry (including paraffin-embedded sections) (starting dilution 1:50, dilution range 1:50-1:500) and solid phase ELISA (starting dilution 1:30, dilution range 1:30-1:3000).

ASC-1 (K-16) is also recommended for detection of ASC-1 in additional species, including equine, canine, bovine, porcine and avian.

Suitable for use as control antibody for ASC-1 siRNA (h): sc-39159, ASC-1 siRNA (m): sc-38808, ASC-1 shRNA Plasmid (h): sc-39159-SH, ASC-1 shRNA Plasmid (m): sc-38808-SH, ASC-1 shRNA (h) Lentiviral Particles: sc-39159-V and ASC-1 shRNA (m) Lentiviral Particles: sc-38808-V.

ASC-1 (K-16) X TransCruz antibody is recommended for Gel Supershift and ChIP applications.

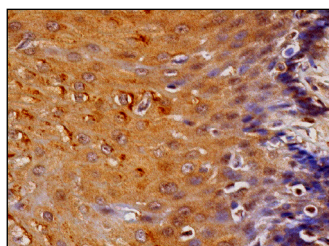
Molecular Weight of ASC-1: 68 kDa.

Positive Controls: K-562 whole cell lysate: sc-2203.

RECOMMENDED SECONDARY REAGENTS

To ensure optimal results, the following support (secondary) reagents are recommended: 1) Western Blotting: use donkey anti-goat IgG-HRP: sc-2020 (dilution range: 1:2000-1:100,000) or Cruz Marker™ compatible donkey anti-goat IgG-HRP: sc-2033 (dilution range: 1:2000-1:5000), Cruz Marker™ Molecular Weight Standards: sc-2035, TBS Blotto A Blocking Reagent: sc-2333 and Western Blotting Luminol Reagent: sc-2048. 2) Immunoprecipitation: use Protein A/G PLUS-Agarose: sc-2003 (0.5 ml agarose/2.0 ml). 3) Immunofluorescence: use donkey anti-goat IgG-FITC: sc-2024 (dilution range: 1:100-1:400) or donkey anti-goat IgG-TR: sc-2783 (dilution range: 1:100-1:400) with UltraCruz™ Mounting Medium: sc-24941. 4) Immunohistochemistry: use ImmunoCruz™: sc-2053 or ABC: sc-2023 goat IgG Staining Systems.

DATA



ASC-1 (K-16): sc-11234. Immunoperoxidase staining of formalin fixed, paraffin-embedded human esophagus tissue showing cytoplasmic and nuclear staining of squamous epithelial cells.

STORAGE

Store at 4° C, ****DO NOT FREEZE****. Stable for one year from the date of shipment. Non-hazardous. No MSDS required.

RESEARCH USE

For research use only, not for use in diagnostic procedures.

PROTOCOLS

See our web site at www.scbt.com or our catalog for detailed protocols and support products.

MONOS
Satisfaction
Guaranteed

Try **ASC-1 (F-8): sc-365202** or **ASC-1 (F-7): sc-376916**, our highly recommended monoclonal alternatives to ASC-1 (K-16).