

Homer (h): 293 Lysate: sc-113176

BACKGROUND

Homer family proteins, also designated Vesl (for VASP/Ena-related gene upregulated during seizure) and LTP, are immediate early gene products that bind to group 1 metabotropic glutamate receptors (mGluRs), proteins involved in triggering intracellular calcium release. Unlike Homer-1a, the prototype member of the Homer family, other Homer family members (Homer-1b and -1c, Homer-2a, -2b and -2c, and Homer-3) are constitutively expressed and contain a coiled-coil (CC) domain that mediates self-multimerization. Homer-1a is enriched at excitatory synapses, does not multimerize and appears to block the association of mGluRs to CC-Homer proteins. Homer proteins have also been shown to link mGluRs with the inositol triphosphate receptors (IP3R).

REFERENCES

1. Brakeman, P.R., Lanahan, A.A., O'Brien, R., Roche, K., Barnes, C.A., Huganir, R.L. and Worley, P.F. 1997. Homer: a protein that selectively binds metabotropic glutamate receptors. *Nature* 386: 284-288.
2. Kato, A., Ozawa, F., Saitoh, Y., Hirai, K. and Inokuchi, K. 1997. Vesl, a gene encoding VASP/Ena family related protein, is upregulated during seizure, long-term potentiation and synaptogenesis. *FEBS Lett.* 412: 183-189.
3. Kato, A., Ozawa, F., Saitoh, Y., Fukazawa, Y., Sugiyama, H. and Inokuchi, K. 1998. Novel members of the Vesl/Homer family of PDZ proteins that bind metabotropic glutamate receptors. *J. Biol. Chem.* 273: 23969-23975.
4. Xiao, B., Tu, J.C., Petralia, R.S., Yuan, J.P., Doan, A., Breder, C.D., Ruggiero, A., Lanahan, A.A., Wenthold, R.J. and Worley, P.F. 1998. Homer regulates the association of group 1 metabotropic glutamate receptors with multivalent complexes of Homer-related, synaptic proteins. *Neuron* 21: 707-716.
5. Tu, J.C., Xiao, B., Yuan, J.P., Lanahan, A.A., Leoffert, K., Li, M., Linden, D.J. and Worley, P.F. 1998. Homer binds a novel proline-rich motif and links group 1 metabotropic glutamate receptors with IP3 receptors. *Neuron* 21: 717-726.
6. Soloviev, M.M., Ciruela, F., Chan, W.Y. and McIlhinney, R.A. 2000. Molecular characterisation of two structurally distinct groups of human Homers, generated by extensive alternative splicing. *J. Mol. Biol.* 295: 1185-1200.
7. Soloviev, M.M., Ciruela, F., Chan, W.Y. and McIlhinney, R.A. 2000. Mouse brain and muscle tissues constitutively express high levels of Homer proteins. *Eur. J. Biochem.* 267: 634-639.
8. Ishiguro, K. and Xavier, R. 2004. Homer-3 regulates activation of serum response element in T cells via its EVH1 domain. *Blood* 103: 2248-2256.

CHROMOSOMAL LOCATION

Genetic locus: HOMER1 (human) mapping to 5q14.1.

PRODUCT

Homer (h): 293 Lysate represents a lysate of human Homer transfected 293 cells and is provided as 100 µg protein in 200 µl SDS-PAGE buffer.

STORAGE

Store at -20° C. Repeated freezing and thawing should be minimized. Sample vial should be boiled once prior to use. Non-hazardous. No MSDS required.

APPLICATIONS

Homer (h): 293 Lysate is suitable as a Western Blotting positive control for human reactive Homer antibodies. Recommended use: 10-20 µl per lane.

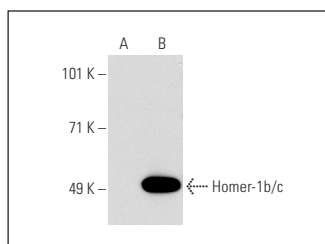
Control 293 Lysate: sc-110760 is available as a Western Blotting negative control lysate derived from non-transfected 293 cells.

Homer-1b/c (D-8): sc-55463 is recommended as a positive control antibody for Western Blot analysis of enhanced human Homer expression in Homer transfected 293 cells (starting dilution 1:100, dilution range 1:100-1:1,000).

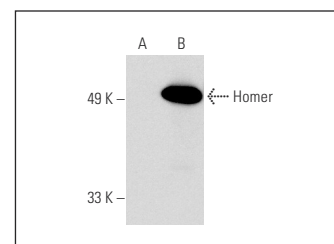
RECOMMENDED SUPPORT REAGENTS

To ensure optimal results, the following support reagents are recommended:
 1) Western Blotting: use m-IgGκ BP-HRP: sc-516102 or m-IgGκ BP-HRP (Cruz Marker): sc-516102-CM (dilution range: 1:1000-1:10000), Cruz Marker™ Molecular Weight Standards: sc-2035, UltraCruz® Blocking Reagent: sc-516214 and Western Blotting Luminol Reagent: sc-2048.

DATA



Homer-1b/c (D-8): sc-55463. Western blot analysis of Homer-1b/c expression in non-transfected: sc-110760 (A) and human Homer transfected: sc-113176 (B) 293 whole cell lysates.



Homer (D-3): sc-17842. Western blot analysis of Homer expression in non-transfected: sc-110760 (A) and human Homer transfected: sc-113176 (B) 293 whole cell lysates.

RESEARCH USE

For research use only, not for use in diagnostic procedures.

PROTOCOLS

See our web site at www.scbt.com for detailed protocols and support products.