

TASK-3 (C-17): sc-11320

BACKGROUND

K⁺ channels are divided into three subclasses, reflecting the number of transmembrane segments (TMS), which are designated 6TMS, 4TMS and 2TMS. Members of the 4TMS class contain two distinct pore regions, and include TWIK, TREK, TRAAK and TASK. TASK channels are highly sensitive to external pH in the physiological range. TASK-1 is expressed in brain and in rat heart, with high levels of expression in the right atrium. TASK-2, mainly expressed in kidney, is localized in cortical distal tubules and collecting ducts, suggesting a role in renal K⁺ transport. TASK-3 from rat cerebellum shares 54% identity with TASK-1, but less than 30% with TASK-2 and other tandem pore K⁺ channels.

REFERENCES

1. Fink, M., et al. 1996. Cloning, functional expression and brain localization of a novel unconventional outward rectifier K⁺ channel. *EMBO J.* 15: 6854-6862.
2. Duprat, F., et al. 1997. TASK, a human background K⁺ channel to sense external pH variations near physiological pH. *EMBO J.* 16: 5464-5471.
3. Cluzeaud, F., et al. 1998. Expression of TWIK-1, a novel weakly inward rectifying potassium channel in rat kidney. *Am. J. Physiol.* 275: C1602-C1609.
4. Fink, M., et al. 1998. A neuronal two P domain K⁺ channel stimulated by arachidonic acid and polyunsaturated fatty acids. *EMBO J.* 17: 3297-3308.
5. Reyes, R., et al. 1998. Cloning and expression of a novel pH-sensitive two pore domain K⁺ channel from human kidney. *J. Biol. Chem.* 273: 30863-30869.
6. Kim, Y., et al. 1999. TBAK-1 and TASK-1, two-pore K⁺ channel subunits: kinetic properties and expression in rat heart. *Am. J. Physiol.* 277: H1669-H1678.

CHROMOSOMAL LOCATION

Genetic locus: KCNK9 (human) mapping to 8q24.3.

SOURCE

TASK-3 (C-17) is an affinity purified goat polyclonal antibody raised against a peptide mapping near the C-terminus of TASK-3 of human origin.

PRODUCT

Each vial contains 200 µg IgG in 1.0 ml of PBS with < 0.1% sodium azide and 0.1% gelatin.

Blocking peptide available for competition studies, sc-11320 P, (100 µg peptide in 0.5 ml PBS containing < 0.1% sodium azide and 0.2% BSA).

STORAGE

Store at 4° C, ****DO NOT FREEZE****. Stable for one year from the date of shipment. Non-hazardous. No MSDS required.

RESEARCH USE

For research use only, not for use in diagnostic procedures.

APPLICATIONS

TASK-3 (C-17) is recommended for detection of TASK-3 of human origin by Western Blotting (starting dilution 1:200, dilution range 1:100-1:1000), immunofluorescence (starting dilution 1:50, dilution range 1:50-1:500) and solid phase ELISA (starting dilution 1:30, dilution range 1:30-1:3000).

TASK-3 (C-17) is also recommended for detection of TASK-3 in additional species, including equine, canine, bovine, porcine and avian.

Suitable for use as control antibody for TASK-3 siRNA (h): sc-42343, TASK-3 shRNA Plasmid (h): sc-42343-SH and TASK-3 shRNA (h) Lentiviral Particles: sc-42343-V.

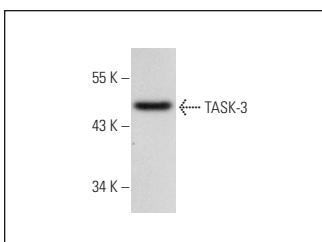
Molecular Weight of TASK-3: 47 kDa.

Positive Controls: human liver extract: sc-363766, Caki-1 cell lysate: sc-2224 or A549 cell lysate: sc-2413.

RECOMMENDED SECONDARY REAGENTS

To ensure optimal results, the following support (secondary) reagents are recommended: 1) Western Blotting: use donkey anti-goat IgG-HRP: sc-2020 (dilution range: 1:2000-1:100,000) or Cruz Marker™ compatible donkey anti-goat IgG-HRP: sc-2033 (dilution range: 1:2000-1:5000), Cruz Marker™ Molecular Weight Standards: sc-2035, TBS Blotto A Blocking Reagent: sc-2333 and Western Blotting Luminol Reagent: sc-2048. 2) Immunofluorescence: use donkey anti-goat IgG-FITC: sc-2024 (dilution range: 1:100-1:400) or donkey anti-goat IgG-TR: sc-2783 (dilution range: 1:100-1:400) with UltraCruz™ Mounting Medium: sc-24941.

DATA



TASK-3 (C-17): sc-11320. Western blot analysis of TASK-3 expression in human liver tissue extract.

SELECT PRODUCT CITATIONS

1. Kovács, I., et al. 2005. TASK-3 immunoreactivity shows differential distribution in the human gastrointestinal tract. *Virchows Arch.* 446: 402-410.
2. Meuth, S.G., et al. 2008. TWIK-related acid-sensitive K⁺ channel 1 (TASK-1) and TASK-3 critically influence T lymphocyte effector functions. *J. Biol. Chem.* 283: 14559-14570.