

C1r (h): 293T Lysate: sc-113879

BACKGROUND

The complement component proteins, C1, C3, C4, and C5, are potent anaphylatoxins that are released during complement activation. Binding of these proteins to their respective G protein-coupled receptors induces proinflammatory events, such as cellular degranulation, smooth muscle contraction, arachidonic acid metabolism, cytokine release, leukocyte activation, and cellular chemotaxis. C1q, together with proenzymes C1r and C1s, yield C1, the first component of the classical pathways of the serum complement system. C1 consists of a calcium dependent trimolecular complex of C1r, C1s and C1q in a 2:2:1 ratio. C1r is a dimer formed of two identical chains that are activated by cleavage into two chains, A and B.

REFERENCES

- Nöthen, M.M. and Dewald, G. 1994. A common amino acid polymorphism in complement component C1r. *Hum. Mol. Genet.* 3: 217.
- Pelloux, S., Thielens, N.M., Hudry-Clergeon, G., Pétilot, Y., Filhol, O. and Arlaud, G.J. 1996. Identification of a cryptic protein kinase CK2 phosphorylation site in human complement protease C1r and its use to probe intramolecular interaction. *FEBS Lett.* 386: 15-20.
- Budayova-Spano, M., Grabarse, W., Thielens, N.M., Hillen, H., Lacroix, M., Schmidt, M., Fontecilla-Camps, J.C., Arlaud, G.J. and Gaboriaud, C. 2002. Monomeric structures of the zymogen and active catalytic domain of complement protease C1r: further insights into the C1 activation mechanism. *Structure* 10: 1509-1519.
- Budayova-Spano, M., Lacroix, M., Thielens, N.M., Arlaud, G.J., Fontecilla-Camps, J.C. and Gaboriaud, C. 2002. The crystal structure of the zymogen catalytic domain of complement protease C1r reveals that a disruptive mechanical stress is required to trigger activation of the C1 complex. *EMBO J.* 21: 231-239.
- Grevink, M.E., Horst, G., Limburg, P.C., Kallenberg, C.G. and Bijl, M. 2005. Levels of complement in sera from inactive SLE patients, although decreased, do not influence *in vitro* uptake of apoptotic cells. *J. Autoimmun.* 24: 329-336.
- Bureeva, S., Andia-Pravdivy, J., Petrov, G., Igumnov, M., Romanov, S., Kolesnikova, E., Kaplun, A. and Kozlov, L. 2005. Inhibition of classical pathway of complement activation with negative charged derivatives of bisphenol A and bisphenol disulphates. *Bioorg. Med. Chem.* 13: 1045-1052.
- Liu, T., Qian, W.J., Gritsenko, M.A., Camp, D.G., 2nd, Monroe, M.E., Moore, R.J. and Smith, R.D. 2005. Human plasma N-glycoproteome analysis by immunoaffinity subtraction, hydrazide chemistry and mass spectrometry. *J. Proteome Res.* 4: 2070-2080.

CHROMOSOMAL LOCATION

Genetic locus: C1R (human) mapping to 12p13.31.

PRODUCT

C1r (h): 293T Lysate represents a lysate of human C1r transfected 293T cells and is provided as 100 µg protein in 200 µl SDS-PAGE buffer.

APPLICATIONS

C1r (h): 293T Lysate is suitable as a Western Blotting positive control for human reactive C1r antibodies. Recommended use: 10-20 µl per lane.

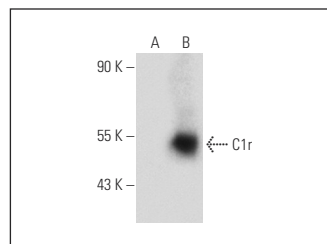
Control 293T Lysate: sc-117752 is available as a Western Blotting negative control lysate derived from non-transfected 293T cells.

C1r (F-1): sc-271642 is recommended as a positive control antibody for Western Blot analysis of enhanced human C1r expression in C1r transfected 293T cells (starting dilution 1:100, dilution range 1:100-1:1,000).

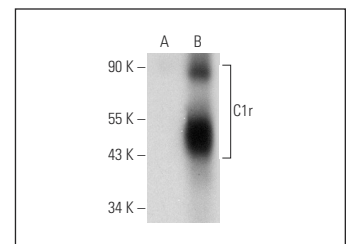
RECOMMENDED SUPPORT REAGENTS

To ensure optimal results, the following support reagents are recommended:
 1) Western Blotting: use m-IgGκ BP-HRP: sc-516102 or m-IgGκ BP-HRP (Cruz Marker): sc-516102-CM (dilution range: 1:1000-1:10000), Cruz Marker™ Molecular Weight Standards: sc-2035, UltraCruz® Blocking Reagent: sc-516214 and Western Blotting Luminol Reagent: sc-2048.

DATA



C1r (F-1): sc-271642. Western blot analysis of C1r expression in non-transfected: sc-117752 (A) and human C1r transfected: sc-113879 (B) 293T whole cell lysates.



C1r (F-7): sc-514105. Western blot analysis of C1r expression in non-transfected: sc-117752 (A) and human C1r transfected: sc-113879 (B) 293T whole cell lysates.

STORAGE

Store at -20° C. Repeated freezing and thawing should be minimized. Sample vial should be boiled once prior to use. Non-hazardous. No MSDS required.

RESEARCH USE

For research use only, not for use in diagnostic procedures.

PROTOCOLS

See our web site at www.scbt.com for detailed protocols and support products.