

LAPSER1 (h): 293T Lysate: sc-116591

BACKGROUND

LAPSER1, also called leucine zipper putative tumor suppressor 2, is a member of the LZTS family. Due to its deletion in multiple cancers, including prostate tumors, LAPSER1 is purported to be a tumor suppressor. In cancer cell lines, the overexpression of LAPSER1 can lead to growth inhibition and colony-forming efficiency. LAPSER1 is highly expressed in testis and prostate, but can be detected at lower levels in spleen, thymus, uterus, small intestine and colon. LAPSER1 co-localizes with γ Tubulin, MKLP-1 and p80 Katanin. LAPSER1 is involved in cytokinesis. The disruption of LAPSER1, which is accompanied by the mislocalization of p80 Katanin, results in malformation of the central spindle. This is a potential impetus for carcinogenesis.

REFERENCES

1. Cabeza-Arvelaiz, Y., Thompson, T.C., Sepulveda, J.L. and Chinault, A.C. 2001. LAPSER1: a novel candidate tumor suppressor gene from 10q24.3. *Oncogene* 20: 6707-6717.
2. Teufel, A., Weinmann, A., Galle, P.R. and Lohse, A.W. 2005. In silico characterization of LZTS3, a potential tumor suppressor. *Oncol. Rep.* 14: 547-551.
3. Thyssen, G., Li, T.H., Lehmann, L., Zhuo, M., Sharma, M. and Sun, Z. 2006. LZTS2 is a novel β -catenin-interacting protein and regulates the nuclear export of β -catenin. *Mol. Cell. Biol.* 26: 8857-8867.
4. Sudo, H. and Maru, Y. 2007. LAPSER1 is a putative cytokinetic tumor suppressor that shows the same centrosome and midbody subcellular localization pattern as p80 Katanin. *FASEB J.* 21: 2086-2100.
5. Iida, M., Anna, C.H., Gaskin, N.D., Walker, N.J. and Devereux, T.R. 2007. The putative tumor suppressor TSC-22 is downregulated early in chemically induced hepatocarcinogenesis and may be a suppressor of GADD 45 β . *Toxicol. Sci.* 99: 43-50.

CHROMOSOMAL LOCATION

Genetic locus: LZTS2 (human) mapping to 10q24.31.

PRODUCT

LAPSER1 (h): 293T Lysate represents a lysate of human LAPSER1 transfected 293T cells and is provided as 100 μ g protein in 200 μ l SDS-PAGE buffer.

RESEARCH USE

For research use only, not for use in diagnostic procedures.

APPLICATIONS

LAPSER1 (h): 293T Lysate is suitable as a Western Blotting positive control for human reactive LAPSER1 antibodies. Recommended use: 10-20 μ l per lane.

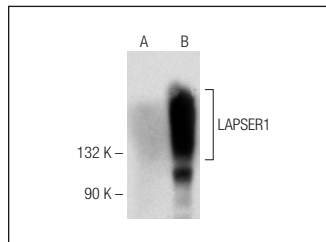
Control 293T Lysate: sc-117752 is available as a Western Blotting negative control lysate derived from non-transfected 293T cells.

LAPSER1 (F-11): sc-365462 is recommended as a positive control antibody for Western Blot analysis of enhanced human LAPSER1 expression in LAPSER1 transfected 293T cells (starting dilution 1:100, dilution range 1:100-1:1,000).

RECOMMENDED SUPPORT REAGENTS

To ensure optimal results, the following support reagents are recommended:
 1) Western Blotting: use m-IgG κ BP-HRP: sc-516102 or m-IgG κ BP-HRP (Cruz Marker): sc-516102-CM (dilution range: 1:1000-1:10000), Cruz Marker™ Molecular Weight Standards: sc-2035, UltraCruz® Blocking Reagent: sc-516214 and Western Blotting Luminol Reagent: sc-2048.

DATA



LAPSER1 (F-11): sc-365462. Western blot analysis of LAPSER1 expression in non-transfected: sc-117752 (A) and human LAPSER1 transfected: sc-116591 (B) 293T whole cell lysates.

STORAGE

Store at -20° C. Repeated freezing and thawing should be minimized. Sample vial should be boiled once prior to use. Non-hazardous. No MSDS required.

PROTOCOLS

See our web site at www.scbt.com for detailed protocols and support products.