

Jaw1 (N-15): sc-11687

BACKGROUND

Jaw1, a type II membrane protein, localizes to the endoplasmic reticulum and is regulated during lymphoid cell development. Expression of Jaw1 is restricted to lymphoid B and T cell lineages and it is downregulated during terminal differentiation. The protein sequence of Jaw1 shares closet similarities with MRV11, a protein specifically expressed in megakaryocytes. Post-translational processing of Jaw1 at the carboxyl-terminus confers its association with the ER, where it co-localizes with the ER marker BiP. The Jaw1 protein contains a coiled-coil domain in the middle-third of the protein and a membrane anchor with a conserved 36 amino acid luminal tail at the carboxy-terminus. Consistent with its expression patterns and endoplasmic reticulum localization, Jaw1 is implicated in regulating antigen receptor assembly and trafficking during lymphoid development.

CHROMOSOMAL LOCATION

Genetic locus: LRMP (human) mapping to 12p12.1.

SOURCE

Jaw1 (N-15) is an affinity purified goat polyclonal antibody raised against a peptide mapping at the N-terminus of Jaw1 of human origin.

PRODUCT

Each vial contains 200 µg IgG in 1.0 ml of PBS with < 0.1% sodium azide and 0.1% gelatin.

Blocking peptide available for competition studies, sc-11687 P, (100 µg peptide in 0.5 ml PBS containing < 0.1% sodium azide and 0.2% BSA).

STORAGE

Store at 4° C, ****DO NOT FREEZE****. Stable for one year from the date of shipment. Non-hazardous. No MSDS required.

PROTOCOLS

See our web site at www.scbt.com or our catalog for detailed protocols and support products.

APPLICATIONS

Jaw1 (N-15) is recommended for detection of Jaw1 of human origin by Western Blotting (starting dilution 1:200, dilution range 1:100-1:1000), immunoprecipitation [1-2 µg per 100-500 µg of total protein (1 ml of cell lysate)], immunofluorescence (starting dilution 1:50, dilution range 1:50-1:500) and solid phase ELISA (starting dilution 1:30, dilution range 1:30-1:3000).

Suitable for use as control antibody for Jaw1 siRNA (h): sc-42926, Jaw1 shRNA Plasmid (h): sc-42926-SH and Jaw1 shRNA (h) Lentiviral Particles: sc-42926-V.

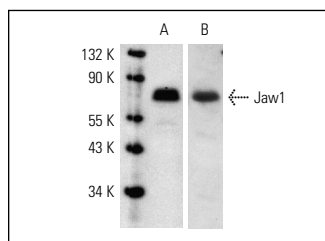
Molecular Weight of Jaw1: 69 kDa.

Positive Controls: WEHI-231 whole cell lysate: sc-2213 or NAMALWA cell lysate: sc-2234.

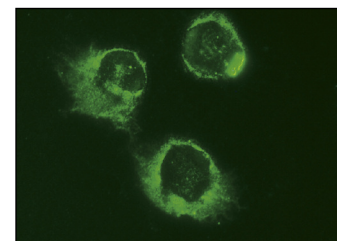
RECOMMENDED SECONDARY REAGENTS

To ensure optimal results, the following support (secondary) reagents are recommended: 1) Western Blotting: use donkey anti-goat IgG-HRP: sc-2020 (dilution range: 1:2000-1:100,000) or Cruz Marker™ compatible donkey anti-goat IgG-HRP: sc-2033 (dilution range: 1:2000-1:5000), Cruz Marker™ Molecular Weight Standards: sc-2035, TBS Blotto A Blocking Reagent: sc-2333 and Western Blotting Luminol Reagent: sc-2048. 2) Immunoprecipitation: use Protein A/G PLUS-Agarose: sc-2003 (0.5 ml agarose/2.0 ml). 3) Immunofluorescence: use donkey anti-goat IgG-FITC: sc-2024 (dilution range: 1:100-1:400) or donkey anti-goat IgG-TR: sc-2783 (dilution range: 1:100-1:400) with UltraCruz™ Mounting Medium: sc-24941.

DATA



Western blot analysis of Jaw1 expression in WEHI-231 (A) and NAMALWA (B) whole cell lysates. Antibodies tested include Jaw1 (E-19): sc-11688 (A) and Jaw1 (N-15): sc-11687 (B).



Jaw1 (N-15): sc-11687. Immunofluorescence staining of methanol-fixed NAMALWA cells showing membrane localization.

SELECT PRODUCT CITATIONS

1. Tedoldi, S., et al. 2006. Jaw1/LRMP, a germinal centre-associated marker for the immunohistological study of B cell lymphomas. *J Pathol.* 209: 454-463.

RESEARCH USE

For research use only, not for use in diagnostic procedures.

MONOS
Satisfaction
Guaranteed

Try **Jaw1 (D-12): sc-390207**, our highly recommended monoclonal alternative to Jaw1 (N-15).