

# BCMA (C-19): sc-11746

## BACKGROUND

The B cell maturation protein (BCMA), also designated BCM and tumor necrosis factor receptor superfamily, member 17, is a type I integral membrane protein located on chromosome band 16p13.13 that belongs to the tumor necrosis factor receptor (TNF-R) superfamily. It is expressed as a 184 amino acid peptide that is expressed only in mature B lymphocytes and is located on the *cis* part of the Golgi apparatus. BCMA shares significant homology with TACI (transmembrane activator) within the cysteine-rich domain. TACI has been shown to bind CAML, which induces activation of NFAT (nuclear factor of activated T cells). Both BCMA and TACI have been shown to bind APRIL and TALL-1, which stimulate B cell proliferation in conjunction with other B cell activators. When overexpressed, TALL-1 stimulates the development of systemic lupus erythematosus (SLE).

## CHROMOSOMAL LOCATION

Genetic locus: BCM (human) mapping to 16p13.13; Bcm (mouse) mapping to 16 A1.

## SOURCE

BCMA (C-19) is an affinity purified goat polyclonal antibody raised against a peptide mapping near the C-terminus of BCMA of human origin.

## PRODUCT

Each vial contains 200 µg IgG in 1.0 ml of PBS with < 0.1% sodium azide and 0.1% gelatin.

Blocking peptide available for competition studies, sc-11746 P, (100 µg peptide in 0.5 ml PBS containing < 0.1% sodium azide and 0.2% BSA).

## STORAGE

Store at 4° C, **\*\*DO NOT FREEZE\*\***. Stable for one year from the date of shipment. Non-hazardous. No MSDS required.

## APPLICATIONS

BCMA (C-19) is recommended for detection of BCMA of mouse, rat and human origin by Western Blotting (starting dilution 1:200, dilution range 1:100-1:1000), immunoprecipitation [1-2 µg per 100-500 µg of total protein (1 ml of cell lysate)], immunofluorescence (starting dilution 1:50, dilution range 1:50-1:500) and solid phase ELISA (starting dilution 1:30, dilution range 1:30-1:3000).

BCMA (C-19) is also recommended for detection of BCMA in additional species, including equine, bovine and porcine.

Suitable for use as control antibody for BCMA siRNA (h): sc-40233, BCMA siRNA (m): sc-40234, BCMA shRNA Plasmid (h): sc-40233-SH, BCMA shRNA Plasmid (m): sc-40234-SH, BCMA shRNA (h) Lentiviral Particles: sc-40233-V and BCMA shRNA (m) Lentiviral Particles: sc-40234-V.

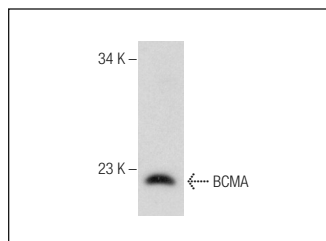
Molecular Weight of BCMA: 20 kDa.

Positive Controls: Daudi cell lysate: sc-2415.

## RECOMMENDED SECONDARY REAGENTS

To ensure optimal results, the following support (secondary) reagents are recommended: 1) Western Blotting: use donkey anti-goat IgG-HRP: sc-2020 (dilution range: 1:2000-1:100,000) or Cruz Marker™ compatible donkey anti-goat IgG-HRP: sc-2033 (dilution range: 1:2000-1:5000), Cruz Marker™ Molecular Weight Standards: sc-2035, TBS Blotto A Blocking Reagent: sc-2333 and Western Blotting Luminol Reagent: sc-2048. 2) Immunoprecipitation: use Protein A/G PLUS-Agarose: sc-2003 (0.5 ml agarose/2.0 ml). 3) Immunofluorescence: use donkey anti-goat IgG-FITC: sc-2024 (dilution range: 1:100-1:400) or donkey anti-goat IgG-TR: sc-2783 (dilution range: 1:100-1:400) with UltraCruz™ Mounting Medium: sc-24941.

## DATA



BCMA (C-19): sc-11746. Western blot analysis of BCMA expression in Daudi whole cell lysate.

## SELECT PRODUCT CITATIONS

1. Wu, H., et al. 2014. Equine adipose-derived stem cell (ASC) expresses BAFF and its receptors, which may be associated with the differentiation process of ASC towards adipocyte. *Int. immunopharmacol.* 18: 365-372.

## RESEARCH USE

For research use only, not for use in diagnostic procedures.

## PROTOCOLS

See our web site at [www.scbt.com](http://www.scbt.com) or our catalog for detailed protocols and support products.

**MONOS**  
Satisfaction  
Guaranteed

Try **BCMA (D-6): sc-390147** or **BCMA (G-4): sc-390336**, our highly recommended monoclonal alternatives to BCMA (C-19).