

# Adducin $\gamma$ (N-13): sc-11882

## BACKGROUND

Adducins are a family of cytoskeleton proteins encoded by three genes ( $\alpha$ ,  $\beta$ ,  $\gamma$ ). Adducin is a protein associated with the inner leaflet of the plasma membrane and is one of the proteins localized at the spectrin-actin junction of the membrane skeleton. The cortical actin cytoskeletal network is lost during apoptosis and Adducins are central in the cortical actin network organization. Adducin  $\alpha$  is a cytoskeletal protein involved with sodium-pump activity in the renal tubule and is associated with hypertension. The expression of Adducin  $\alpha$  and Adducin  $\gamma$  is ubiquitous in contrast to the restricted expression of Adducin  $\beta$ . Adducin  $\beta$  is expressed at high levels in brain and hematopoietic tissues, such as bone marrow, in humans, and in spleen in mice.

## REFERENCES

1. Chapline, C., et al. 1993. Interaction cloning of protein kinase C substrates. J. Biol. Chem. 268: 6858-6861.
2. Burns, M.E., et al. 1998. Rabphilin-3A: a multifunctional regulator of synaptic vesicle traffic. J. Gen. Physiol. 111: 243-255.

## CHROMOSOMAL LOCATION

Genetic locus: ADD3 (human) mapping to 10q25.1.

## SOURCE

Adducin  $\gamma$  (N-13) is an affinity purified goat polyclonal antibody raised against a peptide mapping at the N-terminus of Adducin  $\gamma$  of human origin.

## PRODUCT

Each vial contains 200  $\mu$ g IgG in 1.0 ml of PBS with < 0.1% sodium azide and 0.1% gelatin.

Blocking peptide available for competition studies, sc-11882 P, (100  $\mu$ g peptide in 0.5 ml PBS containing < 0.1% sodium azide and 0.2% BSA).

## RESEARCH USE

For research use only, not for use in diagnostic procedures.

## APPLICATIONS

Adducin  $\gamma$  (N-13) is recommended for detection of Adducin  $\gamma$  of human origin by Western Blotting (starting dilution 1:200, dilution range 1:100-1:1000), immunoprecipitation [1-2  $\mu$ g per 100-500  $\mu$ g of total protein (1 ml of cell lysate)], immunofluorescence (starting dilution 1:50, dilution range 1:50-1:500), immunohistochemistry (including paraffin-embedded sections) (starting dilution 1:50, dilution range 1:50-1:500) and solid phase ELISA (starting dilution 1:30, dilution range 1:30-1:3000).

Adducin  $\gamma$  (N-13) is also recommended for detection of Adducin  $\gamma$  in additional species, including equine, canine, bovine and porcine.

Suitable for use as control antibody for Adducin  $\gamma$  siRNA (h): sc-29640, Adducin  $\gamma$  shRNA Plasmid (h): sc-29640-SH and Adducin  $\gamma$  shRNA (h) Lentiviral Particles: sc-29640-V.

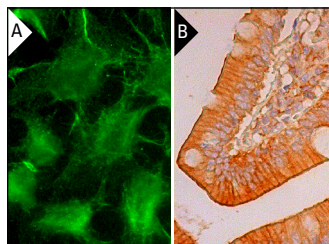
Molecular Weight of Adducin  $\gamma$ : 94 kDa.

Positive Controls: K-562 whole cell lysate: sc-2203.

## RECOMMENDED SECONDARY REAGENTS

To ensure optimal results, the following support (secondary) reagents are recommended: 1) Western Blotting: use donkey anti-goat IgG-HRP: sc-2020 (dilution range: 1:2000-1:100,000) or Cruz Marker<sup>™</sup> compatible donkey anti-goat IgG-HRP: sc-2033 (dilution range: 1:2000-1:5000), Cruz Marker<sup>™</sup> Molecular Weight Standards: sc-2035, TBS Blotto A Blocking Reagent: sc-2333 and Western Blotting Luminol Reagent: sc-2048. 2) Immunoprecipitation: use Protein A/G PLUS-Agarose: sc-2003 (0.5 ml agarose/2.0 ml). 3) Immunofluorescence: use donkey anti-goat IgG-FITC: sc-2024 (dilution range: 1:100-1:400) or donkey anti-goat IgG-TR: sc-2783 (dilution range: 1:100-1:400) with UltraCruz<sup>™</sup> Mounting Medium: sc-24941. 4) Immunohistochemistry: use ImmunoCruz<sup>™</sup>: sc-2053 or ABC: sc-2023 goat IgG Staining Systems.

## DATA



Adducin  $\gamma$  (N-13): sc-11882. Immunofluorescence staining of methanol-fixed HeLa cells showing membrane localization (A). Immunoperoxidase staining of formalin fixed, paraffin-embedded human small intestine tissue showing cytoplasmic and membrane staining of glandular cells (B).

## STORAGE

Store at 4° C, **\*\*DO NOT FREEZE\*\***. Stable for one year from the date of shipment. Non-hazardous. No MSDS required.

## PROTOCOLS

See our web site at [www.scbt.com](http://www.scbt.com) or our catalog for detailed protocols and support products.

**MONOS**  
Satisfaction  
Guaranteed

Try **Adducin  $\gamma$  (G-2): sc-365177** or **Adducin  $\gamma$  (D-11): sc-365178**, our highly recommended monoclonal alternatives to Adducin  $\gamma$  (N-13).