

AIP5 (K-20): sc-11894

BACKGROUND

Atrophin interacting proteins (AIPs) bind to atrophin-1 in the vicinity of the polyglutamine tract. The WW domain consists of 35-40 amino acids and is characterized by 4 well conserved aromatic residues, 2 of which are tryptophan. All five AIPs contain multiple WW domains and can be divided into two distinct classes. AIP1 and AIP3 (WWP3) are MAGUK-like multidomain proteins containing a guanylate kinase-like region, two WW domains, and multiple PDZ domains. AIP2 (WWP2), AIP4 (itchy), and AIP5 (WWP1) are highly homologous, each having four WW domains and a HECT domain characteristic of ubiquitin ligases. These interactors are similar to isolated huntingtin-interacting proteins, suggesting commonality of function between two families of proteins responsible for similar diseases.

REFERENCES

1. Bork, P. and Sudol, M. 1994. The WW domain: a signalling site in dystrophin? *Trends Biochem. Sci.* 19: 531-533.
2. Andre, B. and Springael, J.Y. 1994. WWP, a new amino acid motif present in single or multiple copies in various proteins including dystrophin and the SH3-binding Yes-associated protein YAP65. *Biochem. Biophys. Res. Commun.* 205: 1201-1205.
3. Hofmann, K. and Bucher, P. 1995. The Rsp5-domain is shared by proteins of diverse functions. *FEBS Lett.* 358: 153-157.
4. Pirozzi, G., McConnell, S.J., Uveges, A.J., Carter, J.M., Sparks, A.B., Kay, B.K. and Fowlkes, D.M. 1997. Identification of novel human WW domain-containing proteins by cloning of ligand targets. *J. Biol. Chem.* 272: 14611-14616.
5. Perry, W.L., Hustad, C.M., Swing, D.A., O'Sullivan, T.N., Jenkins, N.A. and Copeland, N.G. 1998. The itchy locus encodes a novel ubiquitin protein ligase that is disrupted in a18H mice. *Nat. Genet.* 18: 143-146.
6. Wood, J.D., Yuan, J., Margolis, R.L., Colomer, V., Duan, K., Kushi, J., Kaminsky, Z., Kleiderlein, J.J., Sharp, A.H. and Ross, C.A. 1998. Atrophin-1, the DRPLA gene product, interacts with two families of WW domain-containing proteins. *Mol. Cell. Neurosci.* 11: 149-160.

CHROMOSOMAL LOCATION

Genetic locus: WWP1 (human) mapping to 8q21.3; Wwp1 (mouse) mapping to 4 A3.

SOURCE

AIP5 (K-20) is an affinity purified goat polyclonal antibody raised against a peptide mapping within an internal region of AIP5 of human origin.

PRODUCT

Each vial contains 200 µg IgG in 1.0 ml of PBS with < 0.1% sodium azide and 0.1% gelatin.

Blocking peptide available for competition studies, sc-11894 P, (100 µg peptide in 0.5 ml PBS containing < 0.1% sodium azide and 0.2% BSA).

APPLICATIONS

AIP5 (K-20) is recommended for detection of AIP5 of mouse, rat and human origin by Western Blotting (starting dilution 1:200, dilution range 1:100-1:1000), immunoprecipitation [1-2 µg per 100-500 µg of total protein (1 ml of cell lysate)], immunofluorescence (starting dilution 1:50, dilution range 1:50-1:500) and solid phase ELISA (starting dilution 1:30, dilution range 1:30-1:3000).

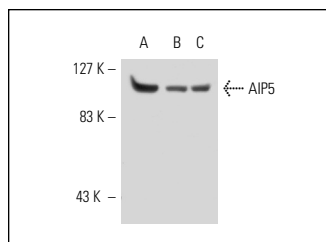
AIP5 (K-20) is also recommended for detection of AIP5 in additional species, including equine, canine, bovine, porcine and avian.

Suitable for use as control antibody for AIP5 siRNA (h): sc-40366, AIP5 siRNA (m): sc-40367, AIP5 shRNA Plasmid (h): sc-40366-SH, AIP5 shRNA Plasmid (m): sc-40367-SH, AIP5 shRNA (h) Lentiviral Particles: sc-40366-V and AIP5 shRNA (m) Lentiviral Particles: sc-40367-V.

Molecular Weight of AIP5: 105 kDa.

Positive Controls: K-562 whole cell lysate: sc-2203, SJRH30 cell lysate: sc-2287 or JAR cell lysate: sc-2276.

DATA



AIP5 (K-20): sc-11894. Western blot analysis of AIP5 expression in K-562 (A), SJRH30 (B) and JAR (C) whole cell lysates.

STORAGE

Store at 4° C, **DO NOT FREEZE**. Stable for one year from the date of shipment. Non-hazardous. No MSDS required.

RESEARCH USE

For research use only, not for use in diagnostic procedures.

PROTOCOLS

See our web site at www.scbt.com or our catalog for detailed protocols and support products.



Try **AIP5 (F-3): sc-390897** or **AIP5 (5AA): sc-100679**, our highly recommended monoclonal alternatives to AIP5 (K-20).