

Per3 (Q-16): sc-12018

BACKGROUND

Biological timepieces called circadian clocks are responsible for the regulation of hormonal rhythms, sleep cycles and other behaviors. The suprachiasmatic nucleus (SCN), which is located in the brain, was the first mammalian circadian clock to be discovered. A number of transcription factors appearing to be molecular components of the SCN clock have been identified. Mutations within the clock gene increase the length of the endogenous period and cause a loss of rhythmicity of circadian oscillations. Three mammalian period proteins, designated Per1, Per2 and Per3, exhibit circadian rhythms in the SCN. During subjective night, Per1 and Per2 RNA levels increase in response to light pulses while Per3 RNA levels show no change in response to light pulses. Tim, for timeless, interacts with Per1 as well as Per2; and Tim and Per1 negatively regulate clock-BMAL1-induced transcription.

REFERENCES

1. Morell, V. 1995. A 24-hour circadian clock is found in the mammalian retina. *Science* 272: 349.
2. King, D.P., et al. 1997. The mouse Clock mutation behaves as an antimorph and maps within the W19H deletion, distal of Kit. *Genetics* 146: 1049-1060.
3. Antoch, M.P., et al. 1997. Functional identification of the mouse circadian Clock gene by transgenic BAC rescue. *Cell* 89: 655-667.
4. Zylka, M.J., et al. 1998. Three period homologs in mammals: differential light responses in the suprachiasmatic circadian clock and oscillating transcripts outside of brain. *Neuron* 20: 1103-1110.
5. Sangoram, A.M., et al. 1998. Mammalian circadian autoregulatory loop: a timeless ortholog and mPer1 interact and negatively regulate Clock-BMAL1-induced transcription. *Neuron* 21: 1101-1113.

CHROMOSOMAL LOCATION

Genetic locus: PER3 (human) mapping to 1p36.23.

SOURCE

Per3 (Q-16) is an affinity purified goat polyclonal antibody raised against a peptide mapping near the C-terminus of Per3 of human origin.

PRODUCT

Each vial contains 200 µg IgG in 1.0 ml of PBS with < 0.1% sodium azide and 0.1% gelatin.

Blocking peptide available for competition studies, sc-12018 P, (100 µg peptide in 0.5 ml PBS containing < 0.1% sodium azide and 0.2% BSA).

Available as TransCruz reagent for Gel Supershift and ChIP applications, sc-12018 X, 200 µg/0.1 ml.

STORAGE

Store at 4° C, **DO NOT FREEZE**. Stable for one year from the date of shipment. Non-hazardous. No MSDS required.

RESEARCH USE

For research use only, not for use in diagnostic procedures.

APPLICATIONS

Per3 (Q-16) is recommended for detection of Per3 of human origin by Western Blotting (starting dilution 1:200, dilution range 1:100-1:1000), immunofluorescence (starting dilution 1:50, dilution range 1:50-1:500), immunohistochemistry (including paraffin-embedded sections) (starting dilution 1:50, dilution range 1:50-1:500) and solid phase ELISA (starting dilution 1:30, dilution range 1:30-1:3000).

Per3 (Q-16) is also recommended for detection of Per3 in additional species, including equine.

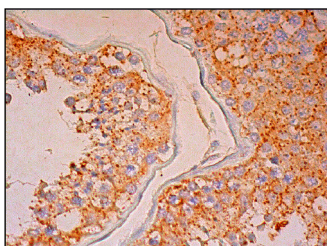
Suitable for use as control antibody for Per3 siRNA (h): sc-38173, Per3 shRNA Plasmid (h): sc-38173-SH and Per3 shRNA (h) Lentiviral Particles: sc-38173-V.

Per3 (Q-16) X TransCruz antibody is recommended for Gel Supershift and ChIP applications.

RECOMMENDED SECONDARY REAGENTS

To ensure optimal results, the following support (secondary) reagents are recommended: 1) Western Blotting: use donkey anti-goat IgG-HRP: sc-2020 (dilution range: 1:2000-1:100,000) or Cruz Marker™ compatible donkey anti-goat IgG-HRP: sc-2033 (dilution range: 1:2000-1:5000), Cruz Marker™ Molecular Weight Standards: sc-2035, TBS Blotto A Blocking Reagent: sc-2333 and Western Blotting Luminol Reagent: sc-2048. 2) Immunofluorescence: use donkey anti-goat IgG-FITC: sc-2024 (dilution range: 1:100-1:400) or donkey anti-goat IgG-TR: sc-2783 (dilution range: 1:100-1:400) with UltraCruz™ Mounting Medium: sc-24941. 3) Immunohistochemistry: use ImmunoCruz™: sc-2053 or ABC: sc-2023 goat IgG Staining Systems.

DATA



Per3 (Q-16): sc-12018. Immunoperoxidase staining of formalin fixed, paraffin-embedded human testis tissue showing cytoplasmic staining of cells in seminiferous ducts.

PROTOCOLS

See our web site at www.scbt.com or our catalog for detailed protocols and support products.

MONOS
Satisfaction
Guaranteed

Try **Per3 (4B9D7): sc-517227**, our highly recommended monoclonal alternative to Per3 (Q-16).