

p-Tau (Ser 214): sc-12413

BACKGROUND

Tau, also known as MAPT (microtubule-associated protein tau), MAPTL, MTBT1 or TAU, is a 758 amino acid protein that localizes to the cytoplasm, as well as to the cytoskeleton and the cell membrane, and contains 4 Tau/MAP repeats. Expressed in neuronal tissue and existing as multiple alternatively spliced isoforms, Tau functions to promote microtubule assembly and stability and is thought to be involved in the maintenance of neuronal polarity. Tau may also link microtubules with neural plasma membrane components and, in addition to its role in microtubule stability, is also necessary for cytoskeletal plasticity. Tau is highly subject to a variety of post-translational modifications, including phosphorylation on serine and threonine residues, polyubiquitination (and subsequent proteasomal degradation) and glycation of specific Tau isoforms. Defects in the gene encoding Tau are associated with Alzheimers disease, pallido-ponto-nigral degeneration (PPND), corticobasal degeneration (CBD) and progressive supranuclear palsy (PSP).

REFERENCES

- Hoshi, M., et al. 1996. Regulation of mitochondrial pyruvate dehydrogenase activity by Tau protein kinase I/ glycogen synthase kinase 3 in brain. *Proc. Natl. Acad. Sci. USA* 93: 2719-2723.
- Singh, T.J., et al. 1996. Differential phosphorylation of human Tau isoforms containing three repeats by several protein kinases. *Arch. Biochem. Biophys.* 328: 43-50.
- Tashiro, K., et al. 1997. Somatodendritic localization of phosphorylated Tau in neonatal and adult rat cerebral cortex. *Neuroreport* 8: 2797-2801.
- Iqbal, K., et al. 1998. Mechanisms of neurofibrillary degeneration and the formation of neurofibrillary tangles. *J. Neural. Transm. Suppl.* 53: 169-180.
- Zhong, J., et al. 1999. Hyperphosphorylated Tau in SY5Y cells: similarities and dissimilarities to abnormally hyperphosphorylated Tau from Alzheimer disease brain. *FEBS Lett.* 453: 224-228.
- Iqbal, K., et al. 2000. Mechanism of neurofibrillary degeneration and pharmacologic therapeutic approach. *J. Neural. Transm. Suppl.* 59: 213-222.
- Hashiguchi, M., et al. 2000. 14-3-3 ζ is an effector of Tau protein phosphorylation. *J. Biol. Chem.* 275: 25247-25254.

CHROMOSOMAL LOCATION

Genetic locus: MAPT (human) mapping to 17q21.31.

SOURCE

p-Tau (Ser 214) is available as either goat (sc-12413) or rabbit (sc-12413-R) polyclonal affinity purified antibody raised against a short amino acid sequence containing Ser 214 phosphorylated Tau of human origin.

PRODUCT

Each vial contains 200 μ g IgG in 1.0 ml of PBS with < 0.1% sodium azide and 0.1% gelatin.

Blocking peptide available for competition studies, sc-12413 P, (100 μ g peptide in 0.5 ml PBS containing < 0.1% sodium azide and 0.2% BSA).

APPLICATIONS

p-Tau (Ser 214) is recommended for detection of Ser 214 phosphorylated Tau of human origin by Western Blotting (starting dilution 1:200, dilution range 1:100-1:1000), immunofluorescence (starting dilution 1:50, dilution range 1:50-1:500), immunohistochemistry (including paraffin-embedded sections) (starting dilution 1:50, dilution range 1:50-1:500) and solid phase ELISA (starting dilution 1:30, dilution range 1:30-1:3000).

Suitable for use as control antibody for Tau siRNA (h): sc-36614, Tau shRNA Plasmid (h): sc-36614-SH and Tau shRNA (h) Lentiviral Particles: sc-36614-V.

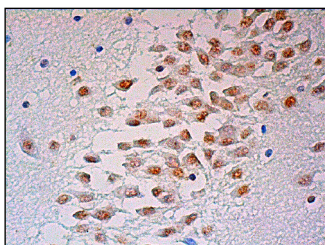
Molecular Weight of p-Tau: 46-68 kDa.

Positive Controls: SK-N-SH cell lysate: sc-2410.

RECOMMENDED SECONDARY REAGENTS

To ensure optimal results, the following support (secondary) reagents are recommended: 1) Western Blotting: use donkey anti-goat IgG-HRP: sc-2020 (dilution range: 1:2000-1:100,000) or Cruz Marker™ compatible donkey anti-goat IgG-HRP: sc-2033 (dilution range: 1:2000-1:5000), Cruz Marker™ Molecular Weight Standards: sc-2035, TBS Blotto B Blocking Reagent: sc-2335 (use 50 mM NaF, sc-24988, as diluent), Western Blotting Luminol Reagent: sc-2048 and Lambda Phosphatase: sc-200312A. 2) Immunofluorescence: use donkey anti-goat IgG-FITC: sc-2024 (dilution range: 1:100-1:400) or donkey anti-goat IgG-TR: sc-2783 (dilution range: 1:100-1:400) with UltraCruz™ Mounting Medium: sc-24941. 3) Immunohistochemistry: use ImmunoCruz™: sc-2053 or ABC: sc-2023 goat IgG Staining Systems.

DATA



p-Tau (Ser 214): sc-12413. Immunoperoxidase staining of formalin fixed, paraffin-embedded human hippocampus tissue showing nuclear staining of neuronal cells.

STORAGE

Store at 4° C, ****DO NOT FREEZE****. Stable for one year from the date of shipment. Non-hazardous. No MSDS required.

RESEARCH USE

For research use only, not for use in diagnostic procedures.