

DDI2 (m2): 293T Lysate: sc-125232

BACKGROUND

DDI1 and DDI2 are ubiquitin receptor homologs of the *Saccharomyces cerevisiae* ddi1 protein, which is involved in regulation of the cell cycle and the late secretory pathway. DDI2 is a 399 amino acid protein that contains one ubiquitin-like domain and exists as 3 isoforms as a result of alternative splicing. The gene encoding DDI2 maps to human chromosome 1p36.21, the largest human chromosome which spans about 260 million base pairs and makes up 8% of the human genome. Other notable genes located on chromosome 1 include LMNA, which is associated with the rare aging disease Hutchinson-Gilford progeria, and the MUTYH gene, which is partially responsible for familial adenomatous polyposis. Stickler syndrome, Parkinsons, Gaucher disease and Usher syndrome.

REFERENCES

1. Watson, M.L., et al. 1990. Genomic organization of the selectin family of leukocyte adhesion molecules on human and mouse chromosome 1. *J. Exp. Med.* 172: 263-272.
2. Blackwood, D.H., et al. 2001. Schizophrenia and affective disorders-cosegregation with a translocation at chromosome 1q42 that directly disrupts brain-expressed genes: clinical and P300 findings in a family. *Am. J. Hum. Genet.* 69: 428-433.
3. Weise, A., et al. 2005. New insights into the evolution of chromosome 1. *Cytogenet. Genome Res.* 108: 217-222.
4. Lans, H., et al. 2006. Cell biology: aging nucleus gets out of shape. *Nature* 440: 32-34.
5. Hennah, W., et al. 2006. Genes and schizophrenia: beyond schizophrenia: the role of DISC1 in major mental illness. *Schizophr. Bull.* 32: 409-416.
6. Gregory, S.G., et al. 2006. The DNA sequence and biological annotation of human chromosome 1. *Nature* 441: 315-321.
7. Marzin, Y., et al. 2006. Chromosome 1 abnormalities in multiple myeloma. *Anticancer Res.* 26: 953-959.
8. McClintock, D., et al. 2006. Hutchinson-Gilford progeria mutant lamin A primarily targets human vascular cells as detected by an anti-Lamin A G608G antibody. *Proc. Natl. Acad. Sci. USA* 103: 2154-2159.
9. Gabriely, G., et al. 2008. Different domains of the UBL-UBA ubiquitin receptor, Ddi1/Vsm1, are involved in its multiple cellular roles. *Mol. Biol. Cell* 19: 3625-3637.

CHROMOSOMAL LOCATION

Genetic locus: Ddi2 (mouse) mapping to 4 E1.

PRODUCT

DDI2 (m2): 293T Lysate represents a lysate of mouse DDI2 transfected 293T cells and is provided as 100 µg protein in 200 µl SDS-PAGE buffer.

STORAGE

Store at -20° C. Repeated freezing and thawing should be minimized. Sample vial should be boiled once prior to use. Non-hazardous. No MSDS required.

APPLICATIONS

DDI2 (m2): 293T Lysate is suitable as a Western Blotting positive control for mouse reactive DDI2 antibodies. Recommended use: 10-20 µl per lane.

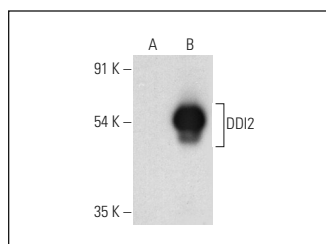
Control 293T Lysate: sc-117752 is available as a Western Blotting negative control lysate derived from non-transfected 293T cells.

DDI2 (A-3): sc-514004 is recommended as a positive control antibody for Western Blot analysis of enhanced mouse DDI2 expression in DDI2 transfected 293T cells (starting dilution 1:100, dilution range 1:100-1:1,000).

RECOMMENDED SUPPORT REAGENTS

To ensure optimal results, the following support reagents are recommended:
 1) Western Blotting: use m-IgGκ BP-HRP: sc-516102 or m-IgGκ BP-HRP (Cruz Marker): sc-516102-CM (dilution range: 1:1000-1:10000), Cruz Marker™ Molecular Weight Standards: sc-2035, UltraCruz® Blocking Reagent: sc-516214 and Western Blotting Luminol Reagent: sc-2048.

DATA



DDI2 (A-3): sc-514004. Western blot analysis of DDI2 expression in non-transfected: sc-117752 (A) and mouse DDI2 transfected: sc-125232 (B) 293T whole cell lysates.

RESEARCH USE

For research use only, not for use in diagnostic procedures.

PROTOCOLS

See our web site at www.scbt.com for detailed protocols and support products.