

REXO1 (4H5): sc-130011

BACKGROUND

Proper DNA and RNA metabolism requires nucleases which function in DNA replication, recombination and repair, as well as in RNA processing and degradation events. REXO1 (REX1, RNA exonuclease 1 homolog), also known as REX1, TCEB3BP1 or ELOABP1, is a 1,221 amino acid protein that localizes to the nucleus and contains one exonuclease domain. Expressed ubiquitously, REXO1 interacts with TCEA2 and Elongin A and may influence transcriptional elongation. The gene encoding REXO1 maps to human chromosome 19, which is the genetic home for a number of immunoglobulin superfamily members, including the killer cell and leukocyte Ig-like receptors, a number of ICAMs, the CEACAM and PSG family and Fc receptors (FcRs).

REFERENCES

1. Moodie, S.J., Norman, P.J., King, A.L., Fraser, J.S., Curtis, D., Ellis, H.J., Vaughan, R.W. and Ciclitira, P.J. 2002. Analysis of candidate genes on chromosome 19 in coeliac disease: an association study of the KIR and LILR gene clusters. *Eur. J. Immunogenet.* 29: 287-291.
2. Boube, M., Joulia, L., Cribbs, D.L. and Bourbon, H.M. 2002. Evidence for a mediator of RNA polymerase II transcriptional regulation conserved from yeast to man. *Cell* 110: 143-151.
3. Tamura, K., Miyata, K., Sugahara, K., Onishi, S., Shuin, T. and Aso, T. 2003. Identification of EloA-BP1, a novel Elongin A binding protein with an exonuclease homology domain. *Biochem. Biophys. Res. Commun.* 309: 189-195.
4. Parham, P. 2005. Immunogenetics of killer cell immunoglobulin-like receptors. *Mol. Immunol.* 42: 459-462.
5. Online Mendelian Inheritance in Man, OMIM™. 2006. Johns Hopkins University, Baltimore, MD. MIM Number: 609614. World Wide Web URL: <http://www.ncbi.nlm.nih.gov/omim/>

CHROMOSOMAL LOCATION

Genetic locus: REXO1 (human) mapping to 19p13.3.

SOURCE

REXO1 (4H5) is a mouse monoclonal antibody raised against amino acids 1060-1221 of recombinant REXO1 of human origin.

PRODUCT

Each vial contains 100 µg IgG_{2b} in 1.0 ml PBS with < 0.1% sodium azide and 0.1% gelatin.

STORAGE

Store at 4° C, ****DO NOT FREEZE****. Stable for one year from the date of shipment. Non-hazardous. No MSDS required.

PROTOCOLS

See our web site at www.scbt.com for detailed protocols and support products.

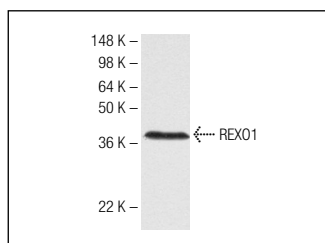
APPLICATIONS

REXO1 (4H5) is recommended for detection of REXO1 of human origin by Western Blotting (starting dilution 1:200, dilution range 1:100-1:1000), immunoprecipitation [1-2 µg per 100-500 µg of total protein (1 ml of cell lysate)] and solid phase ELISA (starting dilution 1:30, dilution range 1:30-1:3000).

Suitable for use as control antibody for REXO1 siRNA (h): sc-97381, REXO1 shRNA Plasmid (h): sc-97381-SH and REXO1 shRNA (h) Lentiviral Particles: sc-97381-V.

Molecular Weight of REXO1: 132 kDa.

DATA



REXO1 (4H5): sc-130011. Western blot analysis of REXO1 expression in 293T whole cell lysate.

RESEARCH USE

For research use only, not for use in diagnostic procedures.