

c-Src (4F1E8): sc-130069

BACKGROUND

The major translational products of the Src gene family are membrane-associated tyrosine protein kinases that lack transmembrane and external amino acid sequences. By virtue of their common structural motifs, the Src family is composed of nine members in vertebrates, including c-Src, c-Yes, c-Fgr, Yrk, Fyn, Lyn, Hck, Lck and Blk. Src family kinases, which contain an amino-terminal cell membrane anchor followed by SH3 and SH2 domains, transduce signals that are involved in the control of a variety of cellular processes, including proliferation, differentiation, motility and adhesion. Src family members are normally maintained in an inactive state and can be activated transiently during cellular events such as mitosis. Different subcellular locations of Src family kinases may be important for the regulation of specific cellular processes, such as mitogenesis, cytoskeletal organization and membrane trafficking. c-Src (also designated pp60Src, Src p60 and proto-oncogene tyrosine protein kinase Src) is expressed in a broad range of tissue and cell types, although the highest levels of c-Src are detected in neuronal tissues and platelets. c-Src may play a role in events associated with both neuronal differentiation and maintenance of mature neuronal cell functions.

CHROMOSOMAL LOCATION

Genetic locus: SRC (human) mapping to 20q11.23; Src (mouse) mapping to 2 H1.

SOURCE

c-Src (4F1E8) is a mouse monoclonal antibody raised against a recombinant protein corresponding to amino acids 10-193 of c-Src of human origin.

PRODUCT

Each vial contains 200 µg IgG_{2b} in 1.0 ml of PBS with < 0.1% sodium azide and 0.1% gelatin.

APPLICATIONS

c-Src (4F1E8) is recommended for detection of c-Src of mouse, rat and human origin by Western Blotting (starting dilution 1:200, dilution range 1:100-1:1000), immunofluorescence (starting dilution 1:50, dilution range 1:50-1:500), immunohistochemistry (including paraffin-embedded sections) (starting dilution 1:50, dilution range 1:50-1:500) and solid phase ELISA (starting dilution 1:30, dilution range 1:30-1:3000).

Suitable for use as control antibody for c-Src siRNA (h): sc-29228, c-Src siRNA (m): sc-29859, c-Src siRNA (r): sc-270199, c-Src shRNA Plasmid (h): sc-29228-SH, c-Src shRNA Plasmid (m): sc-29859-SH, c-Src shRNA Plasmid (r): sc-270199-SH, c-Src shRNA (h) Lentiviral Particles: sc-29228-V, c-Src shRNA (m) Lentiviral Particles: sc-29859-V and c-Src shRNA (r) Lentiviral Particles: sc-270199-V.

Molecular Weight of c-Src: 60 kDa.

Positive Controls: Jurkat whole cell lysate: sc-2204, HeLa whole cell lysate: sc-2200 or PMA treated THP-1 whole cell lysate.

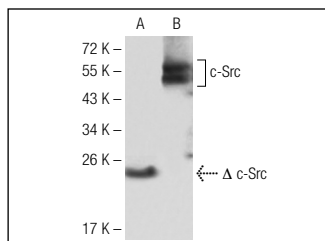
RESEARCH USE

For research use only, not for use in diagnostic procedures.

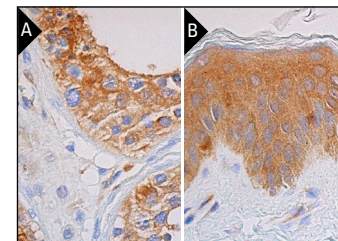
STORAGE

Store at 4° C, ****DO NOT FREEZE****. Stable for one year from the date of shipment. Non-hazardous. No MSDS required.

DATA



c-Src (4F1E8): sc-130069. Western blot analysis of truncated human recombinant c-Src-His protein (A) and c-Src expression in PMA treated THP-1 whole cell lysate (B).



c-Src (4F1E8): sc-130069. Immunoperoxidase staining of formalin fixed, paraffin-embedded human testis tissue showing cytoplasmic staining of cells in seminiferous ducts (A). Immunoperoxidase staining of formalin fixed, paraffin-embedded human skin tissue showing cytoplasmic staining of keratinocytes, fibroblasts, Langerhans cells and melanocytes (B).

PROTOCOLS

See our web site at www.scbt.com or our catalog for detailed protocols and support products.



See **c-Src (B-12): sc-8056** for c-Src antibody conjugates, including AC, HRP, FITC, PE, Alexa Fluor[®] 488 and Alexa Fluor[®] 647.